



RESONANCE

BAITUL AMAN HOUSING SOCIETY, ADABOR, DHAKA



ARCHITECT'S NOTE

Resonance is a culmination of bti's brilliant construction, various amenities and splendid architecture. Intricately designed by Naim Ahmed Kibria, the project faces the east, which lets you soak in the early sunrise to your heart's content. The warm, mellow tones of the building have been used to provide you a sense of great calm and comfort. With plenty of refreshing greenery embedded in various areas, you can truly feel relaxed. While we have added plenty of amenities, we also placed great emphasis on health of the residents and added extra details. Our strategically designed apartments ensure that not a single square foot is wasted.



YOU HAVE CHOSEN
TO BUY FROM

CLASSIC
COLLECTION

ASK ABOUT OUR OTHER COLLECTIONS _____

LUXURY
COLLECTION

COMMERCIAL
COLLECTION

 **WELLNESS**
COMMUNITIES

A BREATHTAKING
FRONT FACADE





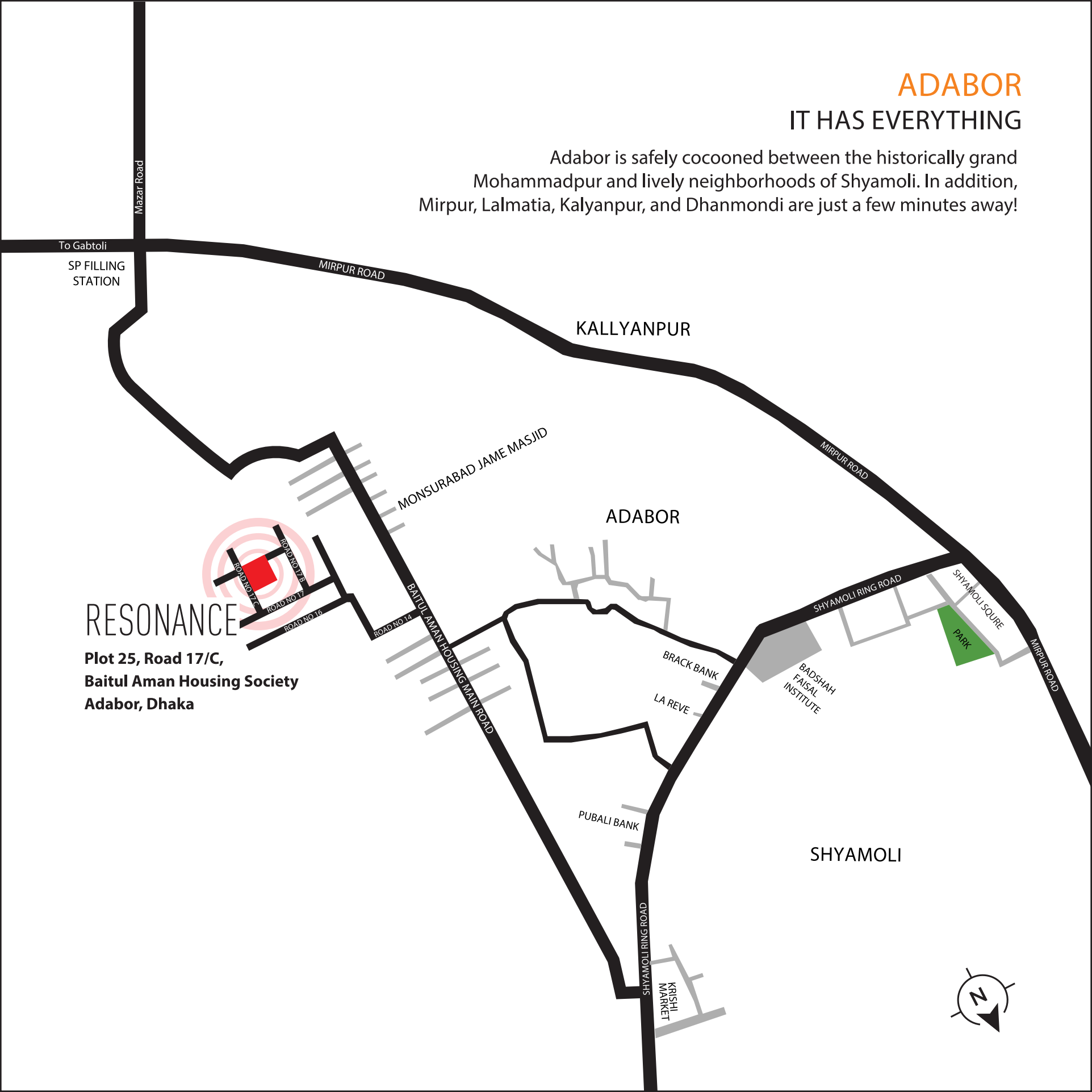
PROJECT AT A GLANCE

ADDRESS	: Plot 25, Road 17/C, Baitul Aman Housing Society, Adabor, Dhaka
Built Over	: 23.63 katha
NUMBER OF FLOORS	: B+G+9
PARKING	: One Parking for Each Apartment
APARTMENT SIZE	: 1505 SFT, 1558 SFT and 1564 SFT
FACING	: East Facing
AMENITIES	: Children's Play Area, 'Meet and Greet' Lounge, Gym Space, BBQ Area, Co-working Space, Jogging Track
LIFTS	: 2 Stretcher Lifts of Which One Runs From Basement to Rooftop and 2 High-Quality 8-Passenger Lifts
RAJUK APPROVAL NO	: 25.39.0000.098.33.1181.19

ADABOR

IT HAS EVERYTHING

Adabor is safely cocooned between the historically grand Mohammadpur and lively neighborhoods of Shyamoli. In addition, Mirpur, Lalmatia, Kalyanpur, and Dhanmondi are just a few minutes away!



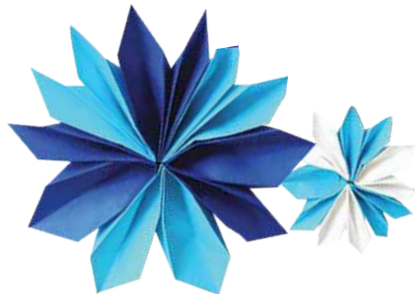
RESONANCE

**Plot 25, Road 17/C,
Baitul Aman Housing Society
Adabor, Dhaka**



CONVENIENCES NEARBY

- Educational Institutes:** ASA University
Mohammadpur Mahila College
Mohammadpur Kendriya College
Milestone School and College
Dhaka Residential Model College
Green Leaf International School and College
- Hospitals:** SP Hospital
Ibn Sina Medical College and Hospital
Suhrawardy Medical College and Hospital
CKD and Urology Hospital
Care Medical College and Hospital
- Banks:** Brac Bank, Dutch Bangla Bank Ltd
Bank Asia, Jamuna Bank
- Restaurants:** KFC, Nobabi Bhoj
Dawat Restaurant, Chilis
- Recreational Spots:** Tokyo Square, Shyamoli Square
Shyamoli Club and Playground
Shyamoli Children's Park
- Groceries:** Agora, Prince Bazar
Shwapno Super Store, Meena Bazar
Adabor Kacha Bazar, Krishi Market
Town Hall Market





BUILDING ENTRANCE

The beautiful entrance is decorated with stylish combinations of glass, grooves, cladding, and adequate greenery that will leave you spellbound. The secured and well-designed boundary wall coupled with round the clock CCTV monitoring system ensures safety around the building periphery.



BASEMENT PLAN

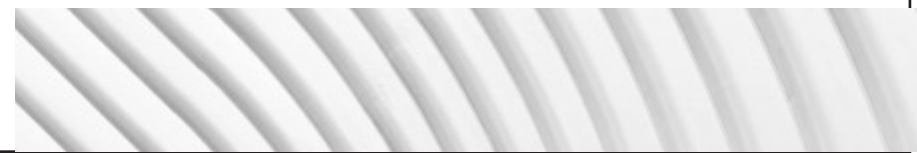


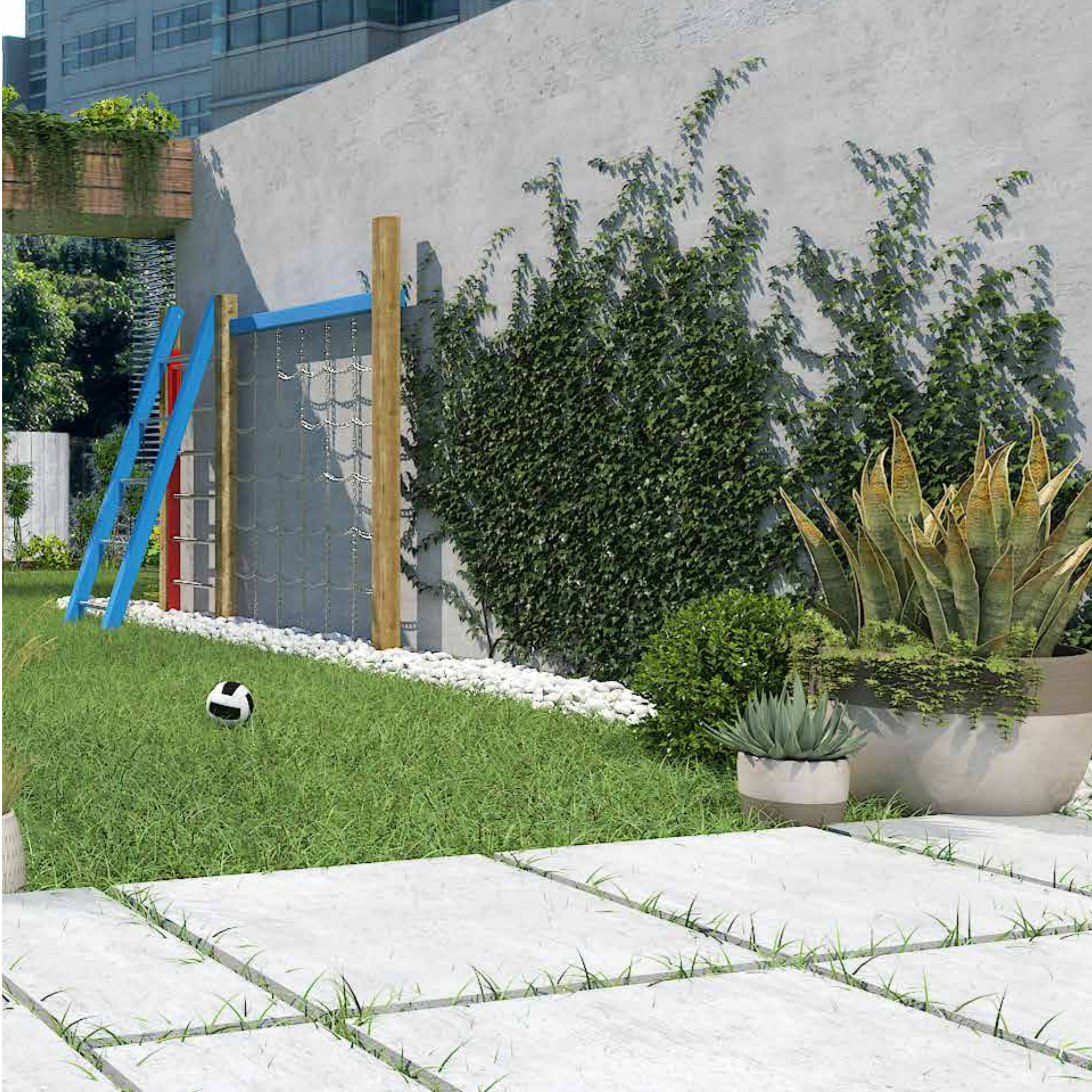
 **GROUND FLOOR PLAN**



GROUND FLOOR FEATURES

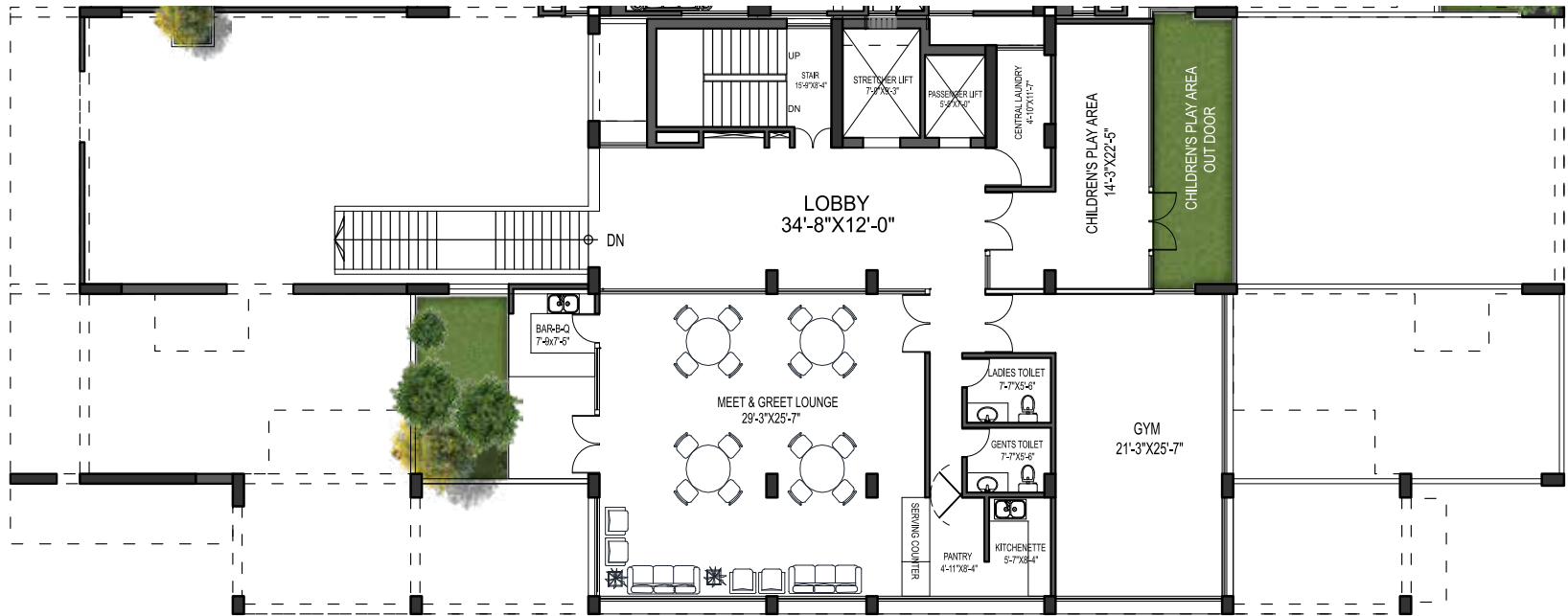
- Children's Play Area
- Reception Lobby
- Co-Working Space
- Driver's Waiting Area





LET YOUR LITTLE ONES DELIGHTFULLY
PLAY IN THE OPEN TO SKY PLAY AREA

 1ST FLOOR PLAN



1ST FLOOR FEATURES

The first floor has been designed as a recreational space for you and your loved ones within the safety of the building premises. Children can heartily enjoy the playing area, while you can hangout at the 'Meet and Greet' lounge. Further you can also burn a few calories at the gym if needed! You can throw small parties with your friends & family in the full-functioned BBQ space anytime.

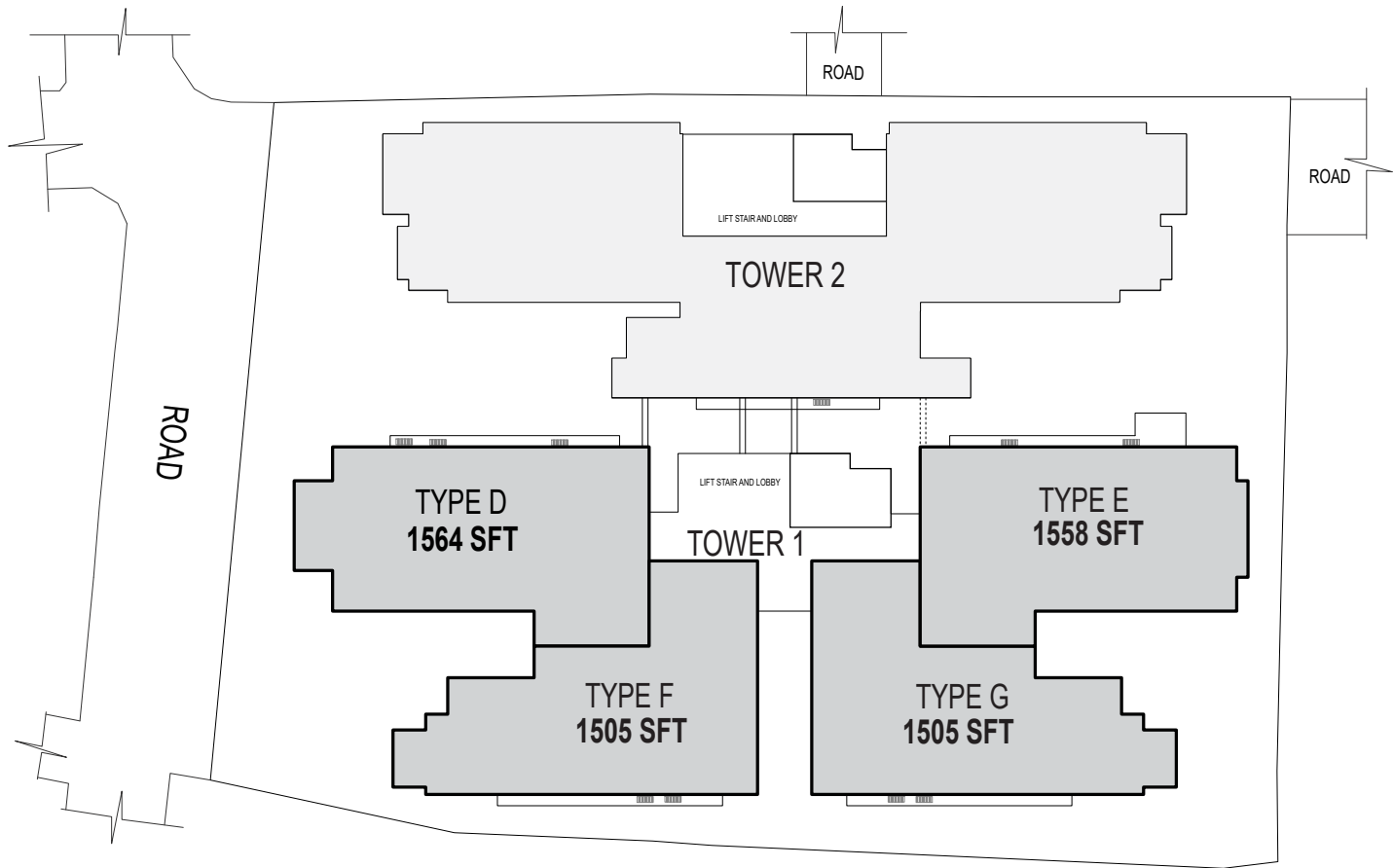


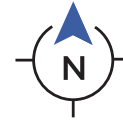
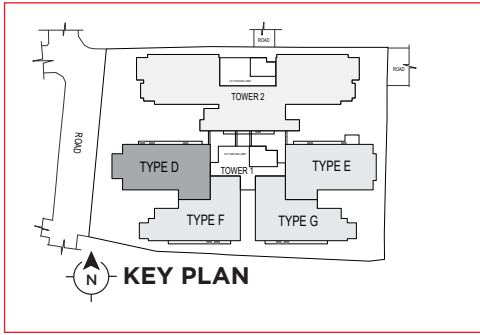




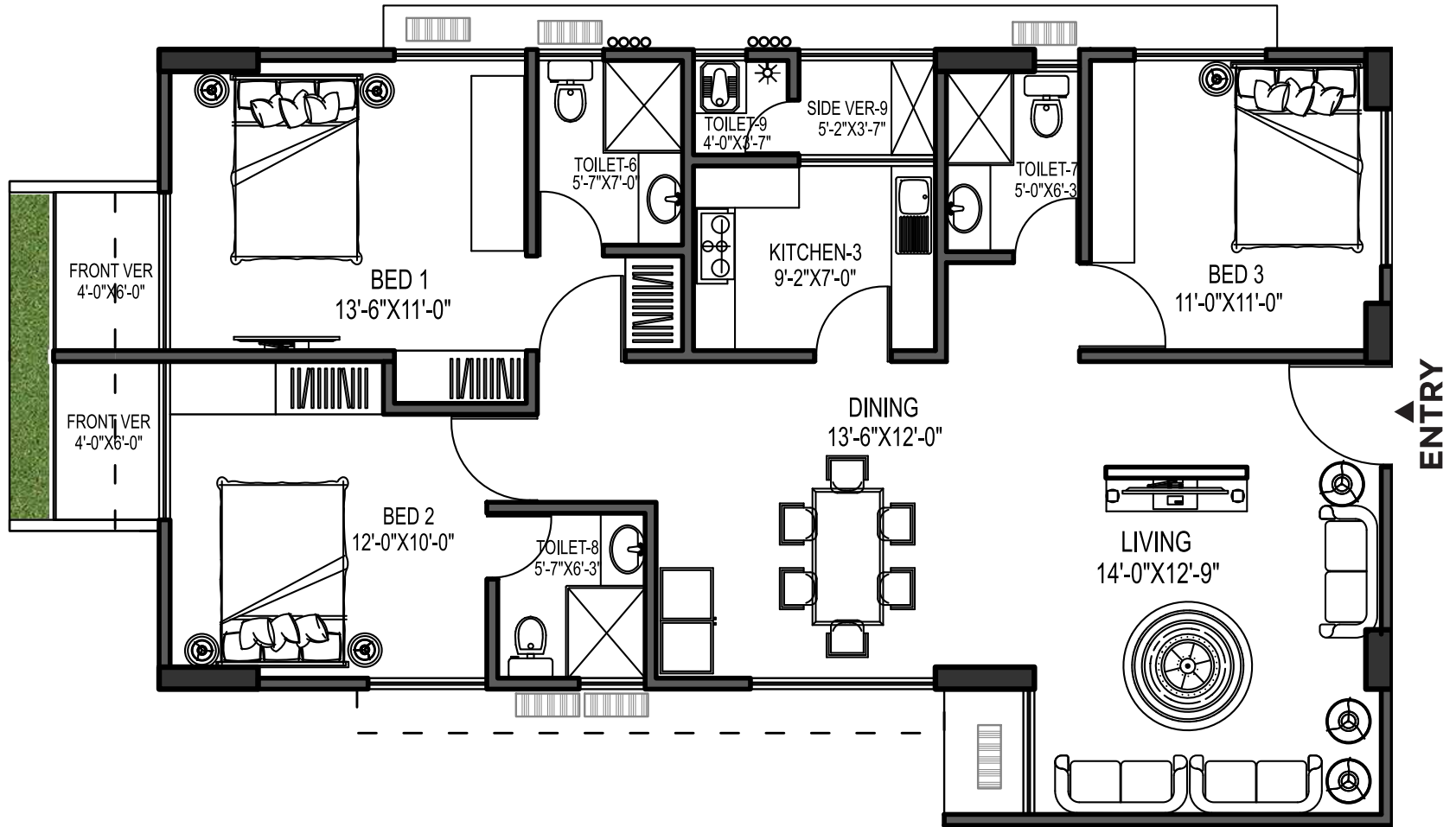
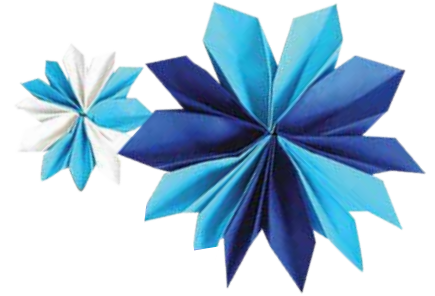


KEY PLAN



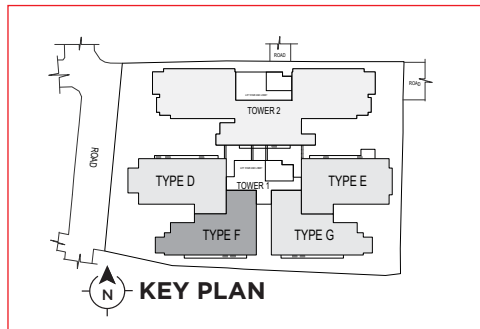


TYPE D • 1564 SFT
2ND TO 9TH FLOOR

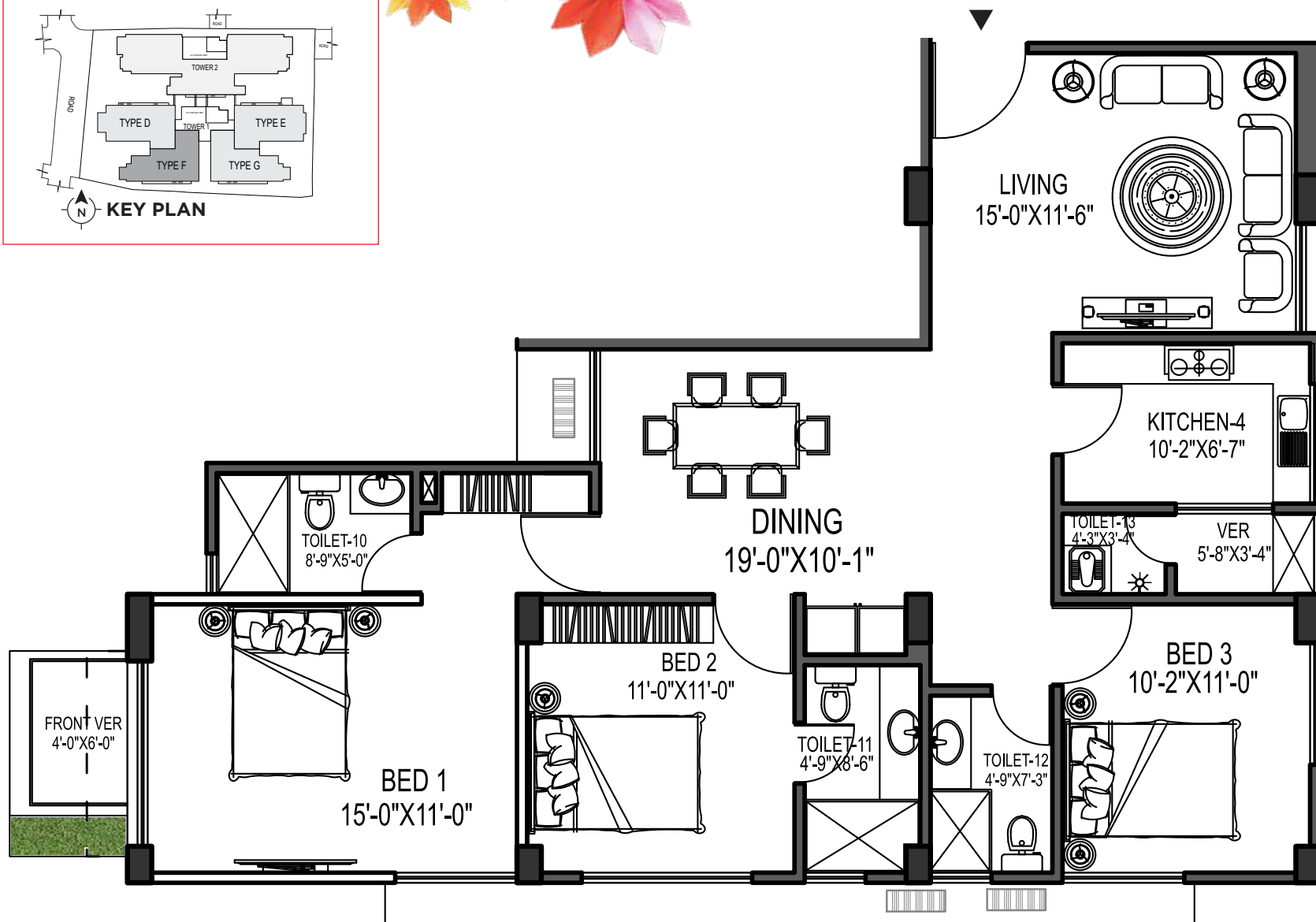




TYPE F • 1505 SFT
2ND TO 9TH FLOOR

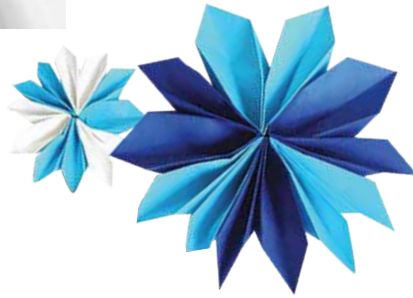


ENTRY

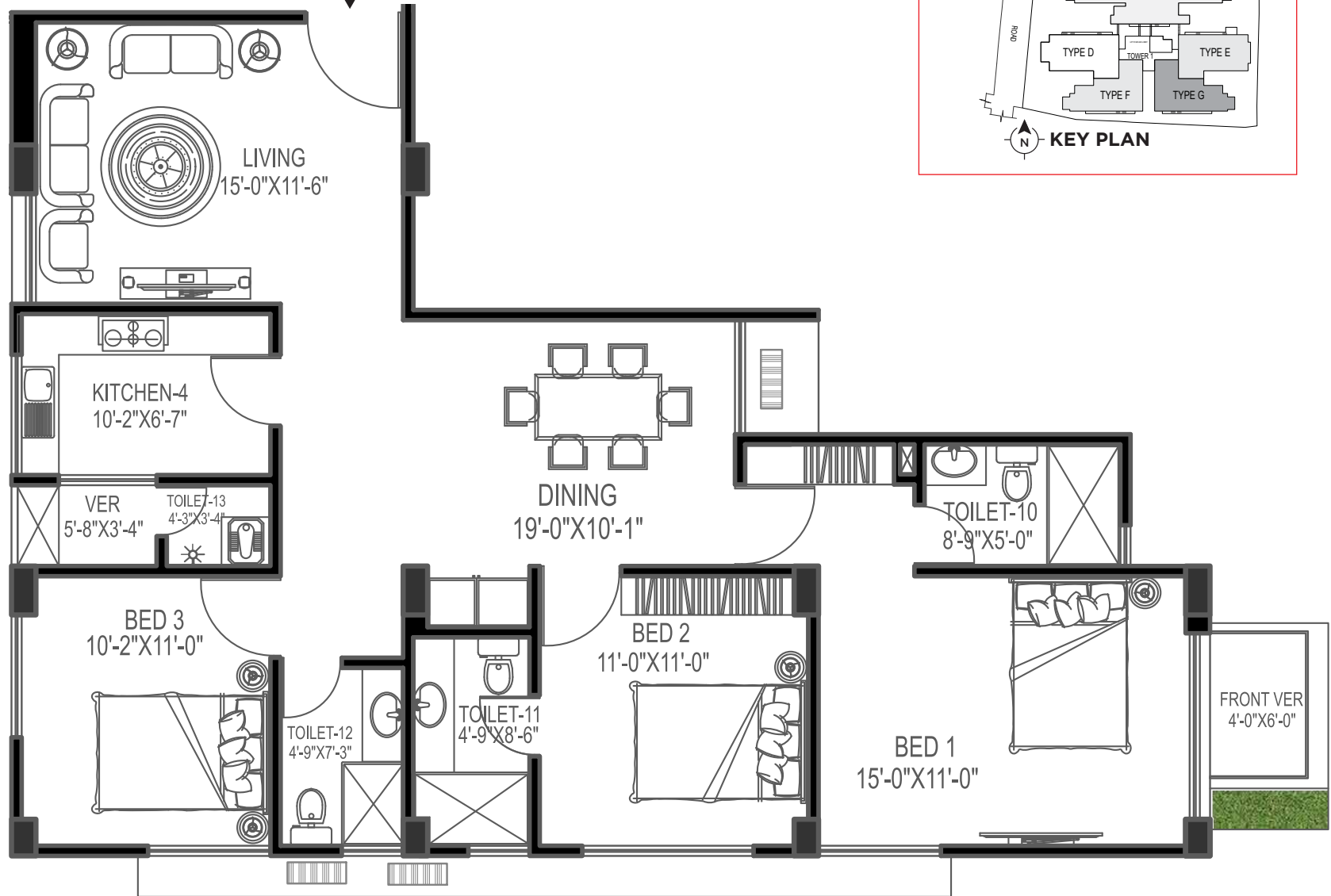




TYPE G • 1505 SFT
2ND TO 9TH FLOOR

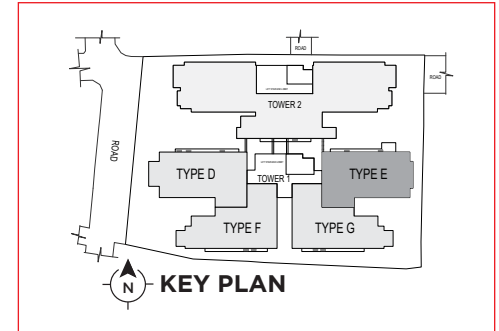


ENTRY

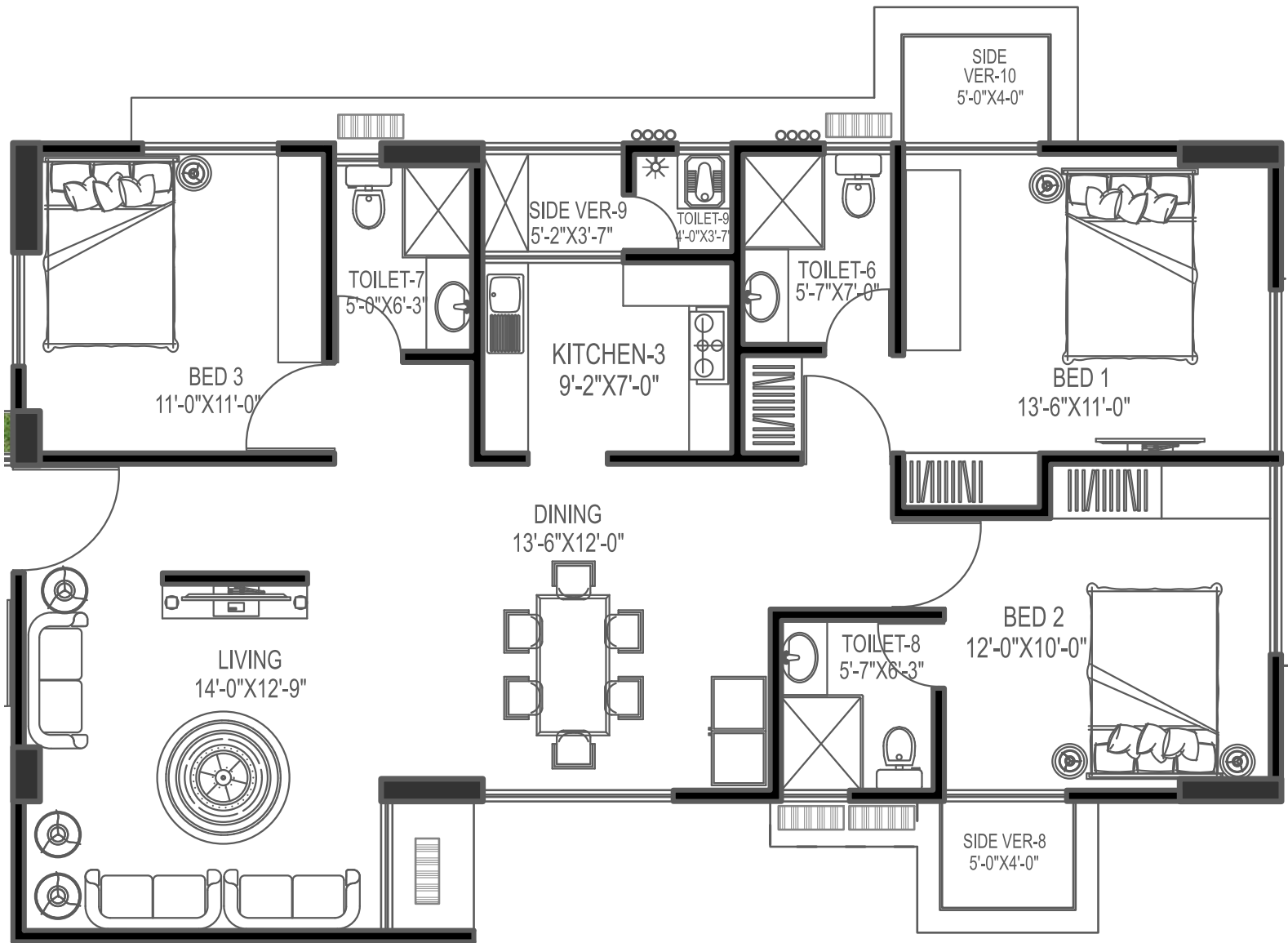


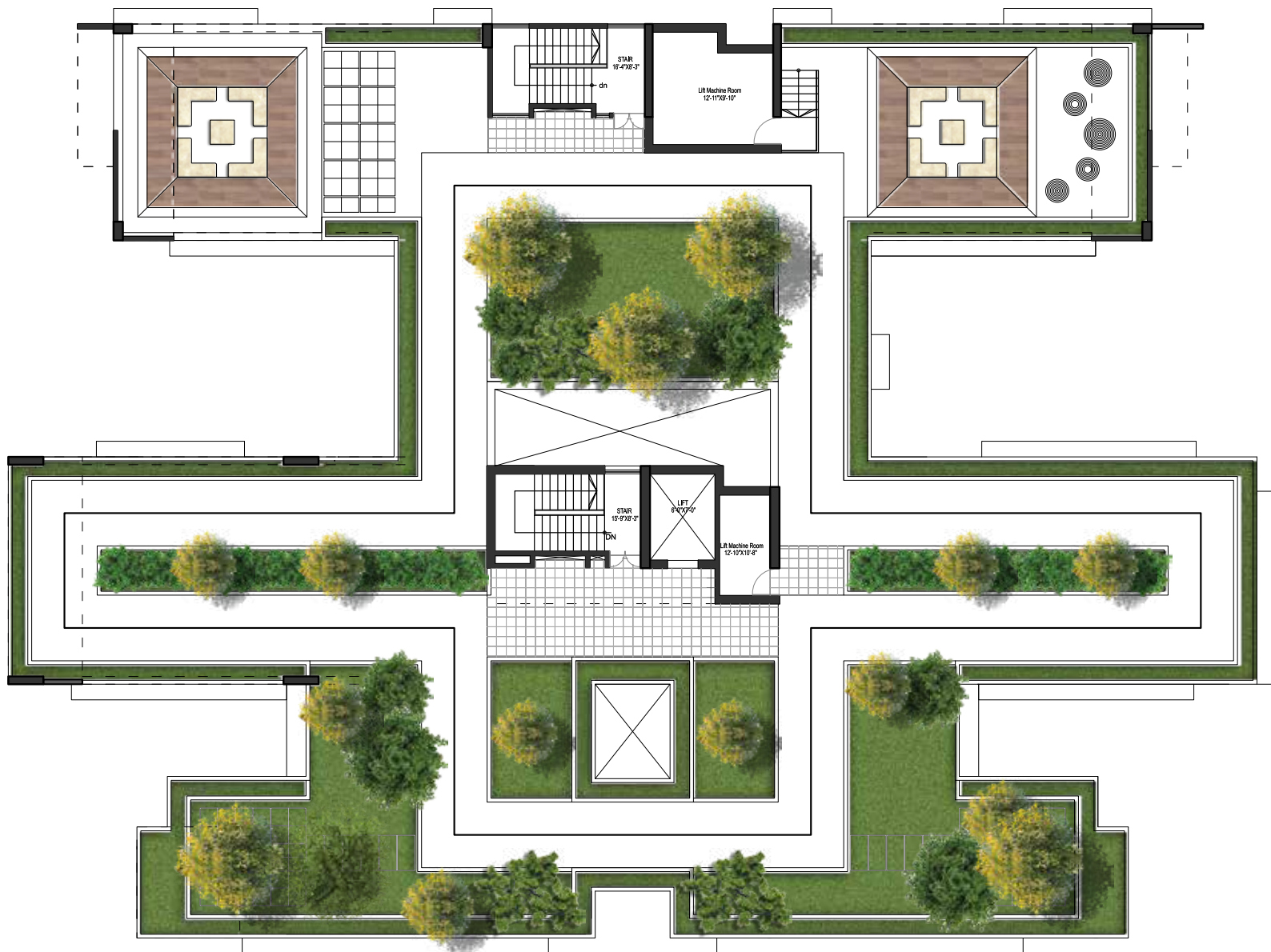


TYPE E • 1558 SFT
2ND TO 9TH FLOOR



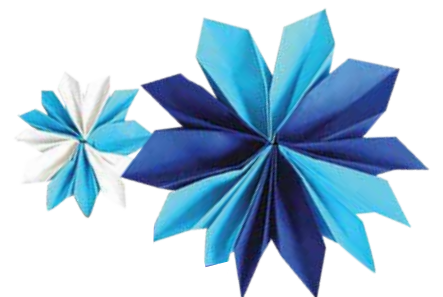
ENTRY





ROOFTOP FEATURES

- Jogging Track.
- Designed Landscaped Rooftop.
- Lime terracing of adequate thickness for protection from heat.
- Protective parapet wall/ railing 4'-0" high around the periphery.
- Separated clothes drying area with lines for drying laundry.





GAIN FITNESS WITH
THE JOGGING TRACK!



BUILDING FEATURES FOR ALL RESIDENTS

GROUND FLOOR

- Proper drainage facility around the periphery of the building for easy water drainage on ground floor
- Garbage bin with easy access for the residents and garbage collectors
- Intercom connection from concierge to all apartments.

PARKING

- Car parking spaces with pavement tiles in different combinations.
- Wheel guard for each car parking.
- Parking spaces will be reserved for the respective apartments.

LIFT, LOBBIES & STAIRCASES

- Lifts are from reputed international manufacturer as per developer's choice, to be installed with auto voltage regulator, inverter, adequate lighting, full-height photocell sensor and emergency alarm, mirrors on the wall, hand phone, stainless steel mirror etching finish on the doors at the ground floor and hairline finish on other floors
- Tiled staircase for easy maintenance and a clean look
- Tiled floors with attractively designed lift walls will complete the elegant look of lift lobbies on every floor
- Sliding window in stair landing to ensure light and ventilation

GENERATOR

- A diesel run emergency auto start/stop canopied generator will be imported from Europe for use in case of power failure with:
 1. Engine-Perkins/Cummins or good quality as per developer's choice.
 2. Alternator- Stamford/ Mecc-Alte or good quality as per developer's choice.
- Generator will support the following:
 1. Lift, water pump and lighting in common space and stairs.
 2. One light and one fan point in every room (including staff bedroom), one light point in the kitchen and all bathrooms
 3. One point for the refrigerator and one point for television

STATE-OF-THE-ART APARTMENT FEATURES

FLOORS

24"x24" mirror polished made in Bangladesh tiles in bedrooms, living room, dining area and all verandahs. Kitchen verandah with non-slippery tiles matched to the floor scheme.

DOORS

Solid Ctg. teak 3'-9"x 7' for the main entrance door. 7' high French polished teak chamble veneer door shutters with teak chamble door frame for all internal doors except bathrooms.

SLIDING DOORS & WINDOWS

Sliding glass windows and doors used as per floor plan, complete with mohair lining, rainwater barrier, and fly-proof netting.

BASIN PROVISION

Provision for basin at dining area.

SECURITY AND SAFETY

Safety grills on windows & full height grill on kitchen verandahs.

PAINTING

Smooth finished plastic paint on all internal walls & ceilings.

ELECTRICAL

Imported gang type electrical switches, plug points, and other fittings. Provision for air conditioners with power points in all beds, living room, dining area as per Electrical Design. Telephone & Internet connection point in dining area. Staff calling bell switch available in the master bedroom. Remote control switch for light and fan in living room and dining area.

LIGHTS

Provision for wall brackets in all bedrooms, dining area, living room and common area. Appropriate lighting available in bathrooms, kitchen & verandahs.

CABLE CONNECTIONS

Concealed television line in all bedrooms and living room.

OPTIONAL FEATURES

All optional work or additional fittings and fixtures (according to customers' choice) may be done at an additional cost after approval of bti. Kitchen cabinets and built-in wardrobes may be ordered separately at an additional cost. Interior design consultation set up through bti is also available at an extra cost.





BATHROOM FEATURES

DOOR

- Wood Plastic Composite (WPC) door shutter with teak chamble solid door frames.

SANITARY WARE & C.P FITTINGS

- Sanitary ware, C.P fittings and accessories are made in Bangladesh.

SHOWER AREA

- Customized shower area with curtain rail as per design.

TILES

- Wall tiles (up to 7' height) and floor tiles made in Bangladesh.

COUNTER TOPS & BASINS

- Marble countertop local cabinet basin in master bathroom. Other bathrooms will have local pedestal basin as per developer's choice.
- Mirrors available in all bathrooms.

WATERLINE

- Concealed hot and cold waterlines in master & 2nd bathroom.

STAFF BATHROOM

- Local wall tiles, floor tiles, long pan and moving shower.



KITCHEN FEATURES

PLATFORM

- Granite in kitchen countertop.

WALL & FLOOR TILES

- Wall tiles up to (7' height) and floor tiles made in Bangladesh.

WATERLINE

- Concealed hot and cold water line.

SINK

- Single bowl sink.

GAS CONNECTION& DETECTOR

- LPG connection for oven/stove with gas leakage detector to prevent fire hazard.

WHEN YOU BUY A bti APARTMENT, YOU GET TO ENJOY PEACE OF MIND

- We provide fire hydrants, fire alarm & fire extinguisher to mitigate any chance of fire damage.
- An earthquake-resistant design is applied under the supervision of a team of experienced and qualified civil engineers to ensure the highest quality of workmanship and safety .
- The structural strength of our building materials is checked in quality controlled labs at every stage of construction.
 - Our unparalleled customer service focuses on fulfilling all commitments on time, to ensure our customers are more than just happy with us.



BIRD'S EYE VIEW



LOOKS JUST AS OUTSTANDING
AND WELL-LIT AT NIGHT AS IN THE DAY



Ask us about Square Feet Story to help you perfect the architectural and interior designs, construction, landscaping and to get innovative solutions, 3D animation and logistic services as per your needs.



FOR YOUR DREAM BED ROOMS,
AS SPLENDID AS THIS, CONTACT US AT



FOR YOUR DREAM DINING SPACE,
AS SPLENDID AS THIS, CONTACT US AT



FOR YOUR DREAM LIVING SPACE,
AS SPLENDID AS THIS, CONTACT US AT



LET bti WORK WITH YOU REGARDING ALL REAL ESTATE PROPERTY RELATED SERVICES

bti has added to its portfolio a number of business services in many aspects of the real estate market and beyond. These business services have been created not only to serve the bti customers but also serve those who believe in our reputation as a company well-known for its business ethics and expertise that has been carefully built up through 4 decades of serving customers.



DHAKA OFFICE

bti Celebration Point
Plot: 3&5, Road: 113/A, Gulshan, Dhaka 1212
email: info@btibd.org

CHATTOGRAM OFFICE

bti Landmark
549/646, Zakir Hossain Road, Wireless More
West Khulshi, Chattogram
email: info_ctg@btibd.org

btibd.com |  **16604**

Whatsapp: +880 1313 401405



...SINCE 1984

GENERAL DISCLAIMER

Information contained in this brochure is subject to change. The measurements are approximate. Illustrations provided are only to facilitate presentation. Apartments are sold unfurnished. Furniture and fixtures are not part of the offer or contract. Features and amenities may vary as per availability based on market prices/design requirement/ price fluctuation.



btibd.com |  16604

 +880 1313 401405



...SINCE 1984