

Silver Wood
AT AFTAB NAGAR

AT A GLANCE



PLOT NO # 37,39,41 & 43
ROAD # 4,
BLOCK # E
AFTAB NAGAR, DHAKA.



BUILT OVER
9.16 KATHA



NUMBER OF
FLOORS: G+8



1258-1486 SFT
APARTMENTS



3-BEDROOM
HOMES



1-STRETCHER
LIFT



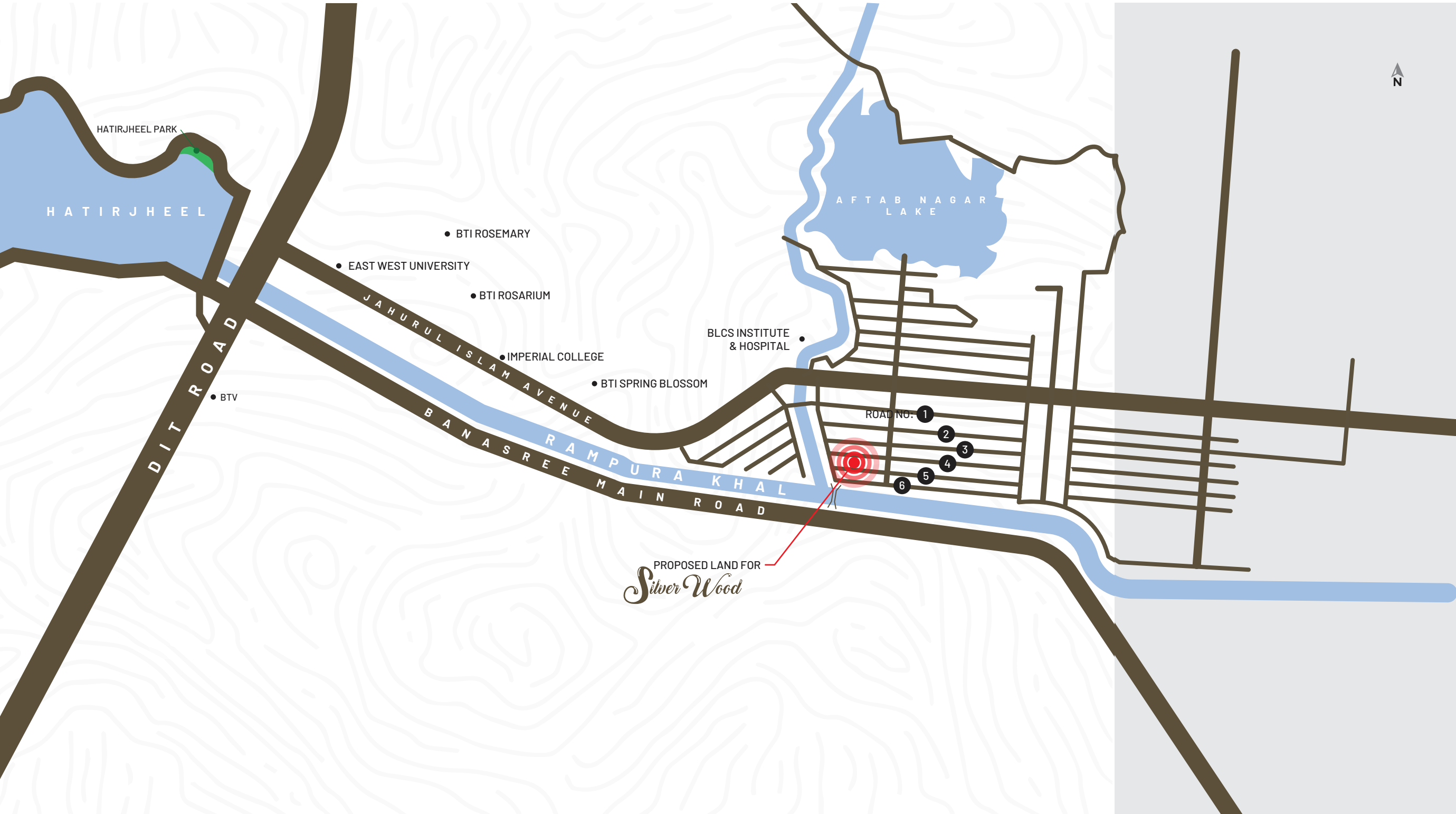
RAJUK APPROVAL NO:
25.39.0000.106.33.299.21



Silver Wood

An elegant display of bright warm tones
contrasting against glass in the front elevation





LOCATION HIGHLIGHT

Silver Wood is located in Block E, Aftabnagar, a quiet and serene neighborhood with plenty of amenities nearby. Badda, Rampura, Hatir Jheel, Banasree, and Meradia Bazar are conveniently close. This means you will get easy access to shopping malls, academic institutions, banks, ATM booths, hospitals, clinics, grocery stores, and much more.



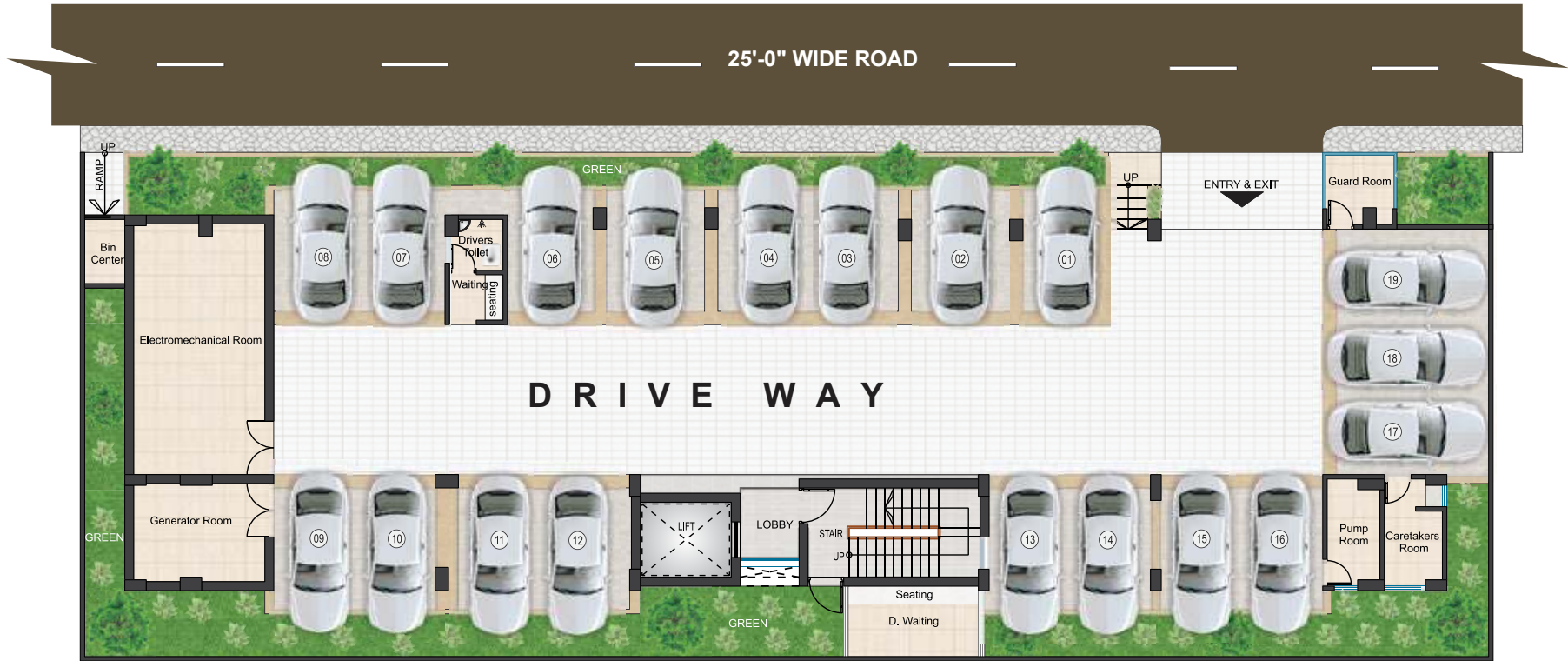
SILVER WOOD

PLOT - 37,39,41&43
BLOCK- E, AFTABNAGAR

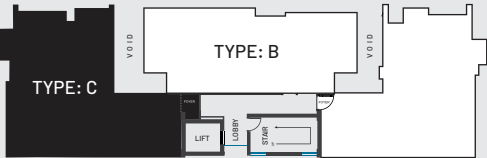


GROUND FLOOR

The ground floor has a total of 19 parking spots, with each parking spot dedicated to one apartment. The spacious driveway allows seamless parking. A caretaker room and drivers' waiting area are available. To top it all off, the area is decorated with adequate amounts of greenery, creating an aesthetically pleasing and neat design.



1ST FLOOR PLAN TYPE: C 1486 SFT



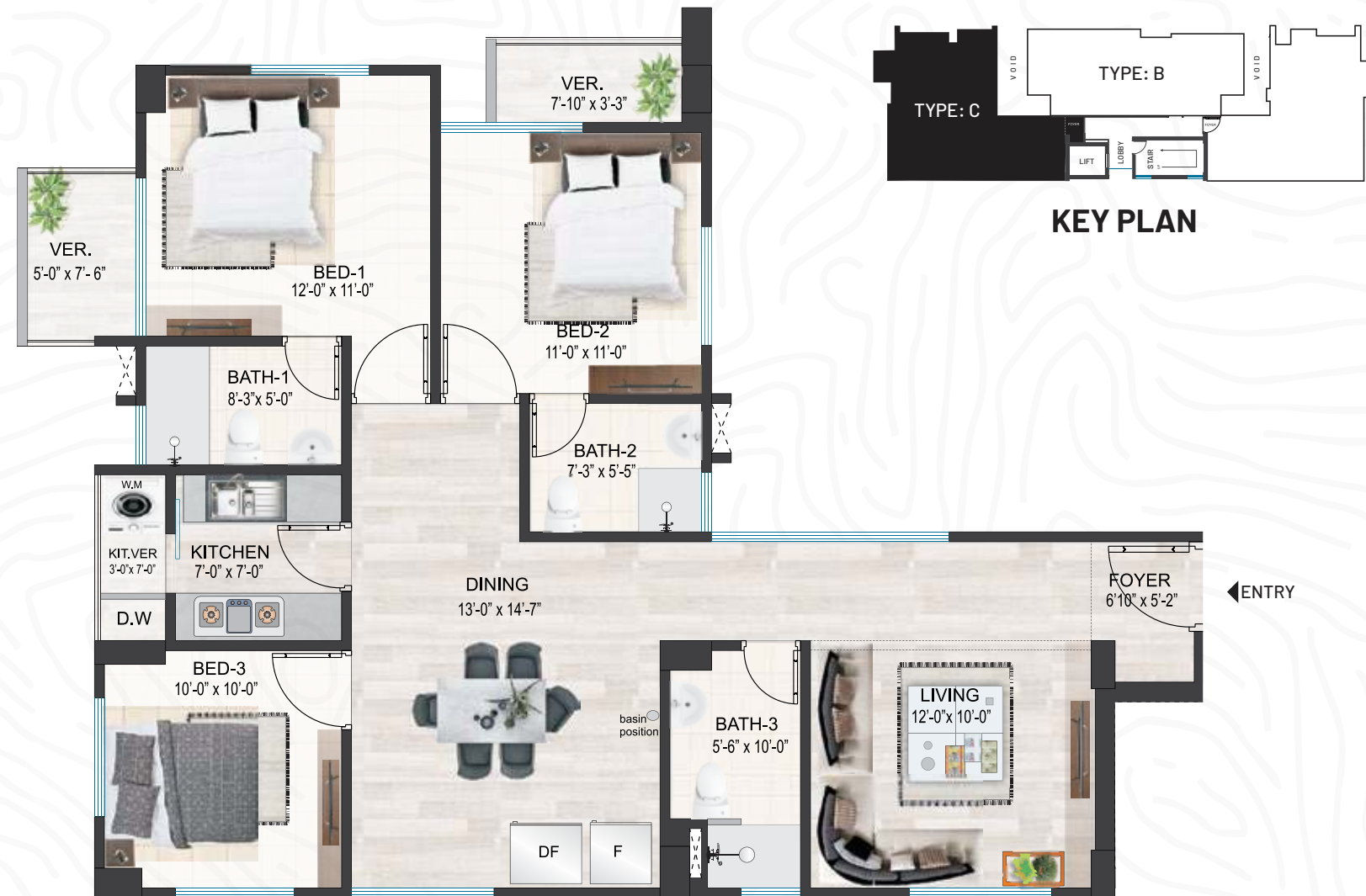
KEY PLAN





2ND TO 7TH FLOOR PLAN

TYPE: C 1486 SFT



4TH TO 7TH FLOOR PLAN

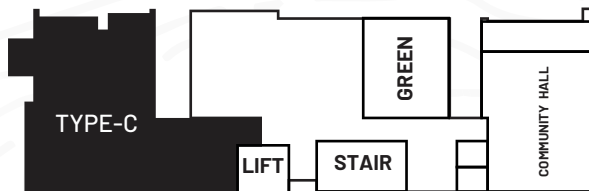
TYPE: B 1258 SFT





8TH FLOOR PLAN

1486SFT

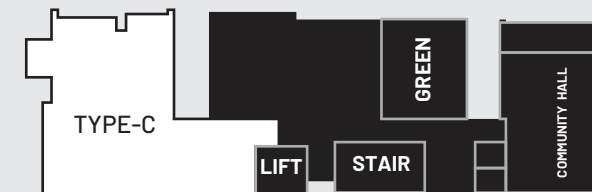


KEY PLAN



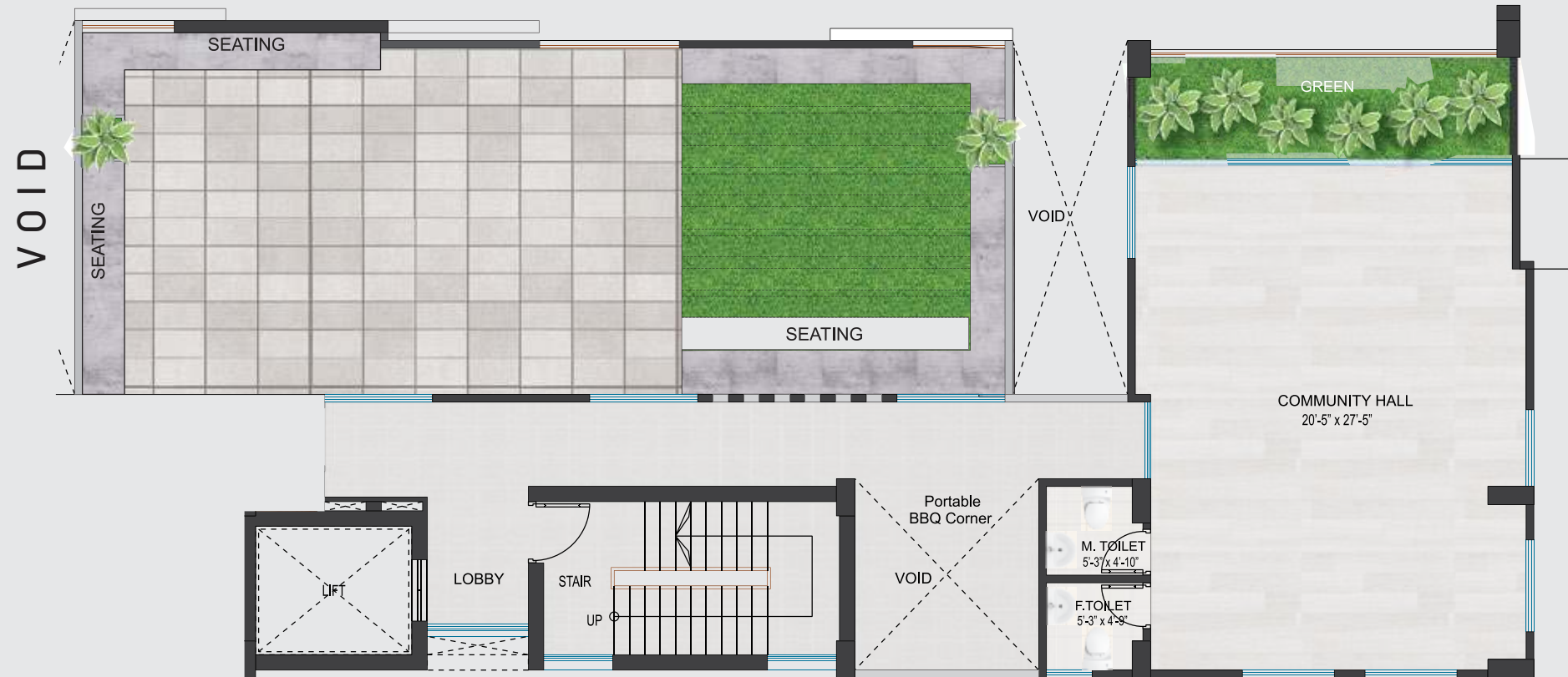
8TH FLOOR PLAN

TYPE: COMMUNITY



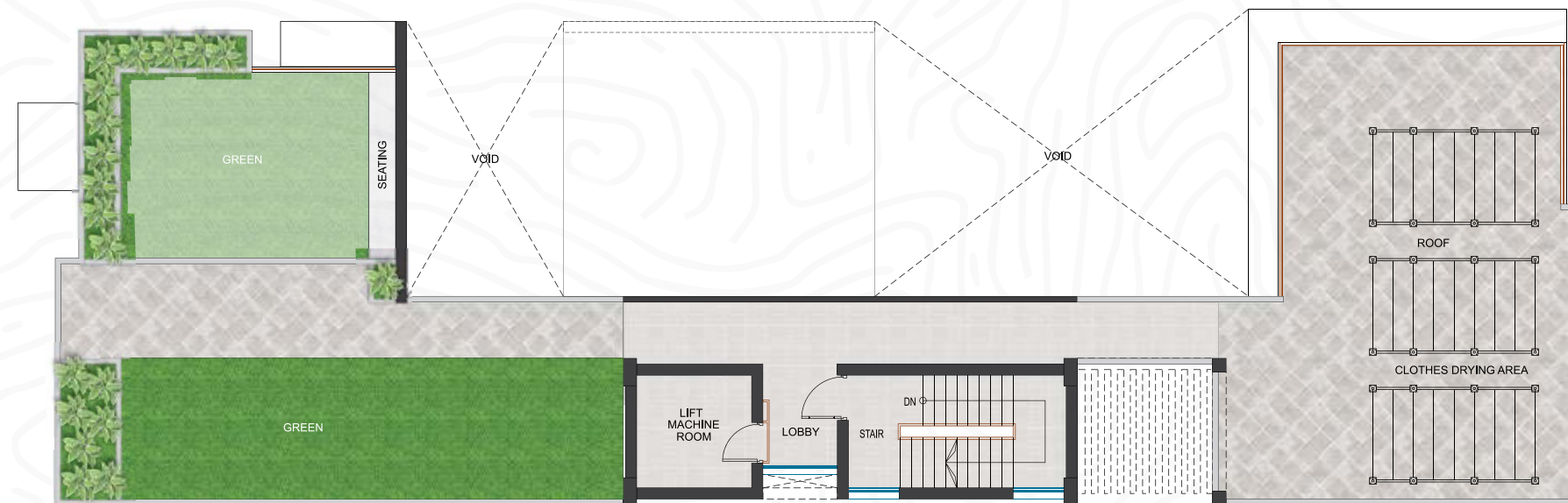
KEY PLAN

The spacious 8th floor community hall can be used to throw any party or event in style. You can easily prepare a delicious feast thanks to the BBQ zone, while your guests remain entertained within the landscaped greenery and seating arrangements.





ROOFTOP



BIRD'S EYE VIEW

The rooftop has been designed in a manner that dedicates separate spaces for individual functions. The clothes drying area is secluded from the rooftop green lawn so that you can use the remaining space for recreation and relaxation.



STATE-OF-THE-ART APARTMENT FEATURES:

Floors:	24"x 24" mirror polished made-in-Bangladesh tiles in foyer, bedrooms, living room, dining room & all verandahs. Kitchen verandah with non-slippery tiles matched to the floor scheme.
Main Door:	Solid Chittagong Teak 3'-9"x 7' main entrance door with door chain, check viewer, apartment name plate, and door handle with handle lock.
Internal Doors:	7' high French polished veneer door shutters with Teak chamble door frame for all internal doors except bathrooms.
Sliding doors & windows:	Sliding glass windows and doors used as per floor plan, complete with mohair lining, rainwater barrier, and fly-proof netting.
Security and Safety:	Safety grills on windows & full height grill on kitchen verandahs.
Painting:	Smooth finished plastic paint on all internal walls & ceilings.
Basin:	Provision for basin at dining area.
Electrical:	Imported gang type electrical switches, plug points, and other fittings. Provision for air conditioners with power points in all bedrooms, living /living cum dining area as per electrical design.. Internet connection point in dining area. Staff calling bell switch is available in the Master bedroom.
Lights:	Provision for wall brackets in all bedrooms, dining room, living room and common area. Appropriate lighting in bathrooms, kitchen & verandahs.
Cable connections:	Concealed television line in all bedrooms & living rooms.

BATHROOM FEATURES:

Door:	Laminated door shutter with Teak chamble solid door frames.
Sanitary ware:	Sanitary ware made-in-Bangladesh.
C.P fittings:	C.P fittings & accessories made-in-Bangladesh.
Shower area:	Customized shower area with curtain rail as per design.
Tiles:	Wall and floor tiles made-in-Bangladesh.
Counter tops & basins:	Marble countertop cabinet basin in Master bathroom, while other bathrooms will have pedestal basin as per developer's choice. Mirrors in all bathrooms.
Water Line:	Concealed hot & cold water lines in all bathrooms.

KITCHEN FEATURES:

Platform:	Granite in kitchen countertop.
Wall & floor Tiles:	Wall tiles (up to 7') height and floor tiles made-in-Bangladesh.
Water Line:	Concealed hot & cold water line.
Sink:	Single bowl sink.
Gas Connection & Detector:	LPG connection for oven/stove with gas detector connected to prevent potential fire hazard through gas leakage.

LIFT, LOBBIES & STAIRCASES

- A high quality Stretcher capacity lift (from reputed international manufacturer as per developer's choice) to be installed with auto voltage regulator, inverter, adequate lighting, full-height photocell sensor and emergency alarm, mirrors on the wall, hand phone, stainless steel mirror etching finish on the doors at the ground floor and hairline finish on other floors
- Tiled staircase for easy maintenance and a clean look.
- Tiled floors with attractively designed lift walls will complete the elegant look of lift lobbies on every floor.
- Lift to have Plasma Air inside lift cabin.
- Sliding window in stair landing to ensure light and ventilation.

GENERATOR

- A diesel run emergency auto start/stop canopied generator will be imported from Europe for use in case of power failure with:
 1. Engine-Perkins/Cummins or good quality as per developer's choice.
 2. Alternator- Stamford/ Mecc-Alte or good quality as per developer's choice.
- Generator will support the following:
 1. Lift, water pump and lighting in common space and stairs.
 2. One light and one fan point in every room, one light point in kitchen and all bathrooms.
 3. One point for refrigerator and one point for television.

WATER

- Underground water reservoir with lifting pump to store two days' consumption capacity.
- An overhead water tank above the rooftop with capacity to serve half day requirements.
- One standby water pump for emergencies.

OPTIONAL FEATURES

All optional work or additional fittings and fixtures (according to customers' choice) may be done at an additional cost after approval of bti. Kitchen cabinets and built-in wardrobes may be ordered separately at an additional cost. Interior design consultation set up through bti is also available at an extra cost.

BUYING AN APARTMENT MADE STRESS-FREE!

- We provide fire protected door, fire hydrants, fire alarm & fire extinguisher to mitigate any chance of fire damage.
- An earthquake-resistant design is applied under the supervision of a team of experienced and qualified civil engineers to ensure the highest quality of workmanship and safety.
- The structural strength of our building materials is checked in quality controlled labs at every stage of construction.
- Our unparalleled customer service focuses on fulfilling all commitments on time, to ensure our customers are more than just happy with us.



YOUR BEDROOM
CAN BE AS SUAVE
AS THIS. TO KNOW
MORE, CONTACT US AT



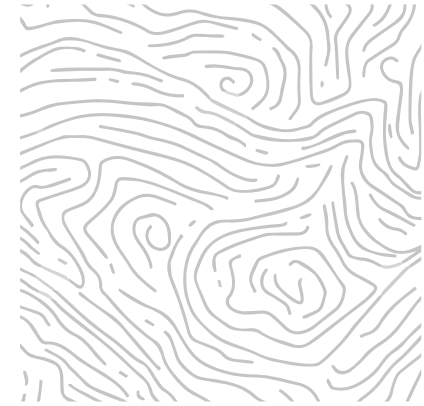


FOR YOUR DREAM LIVING
SPACE, AS SPLENDID AS THIS,
CONTACT US AT



GIVE YOUR COMMUNITY
ROOM AN ARTISTIC FEEL





LET BTI WORK WITH YOU REGARDING ALL REAL ESTATE PROPERTY RELATED SERVICES

bti has added to its portfolio a number of business services in many aspects of the real estate market and beyond. These business services have been created not only to serve the bti customers but also serve those who believe in our reputation as a company well-known for its business ethics and expertise that has been carefully built up through 4 decades of serving customers.





btibd.com | ☎ 16604

or whatsapp +880 1313 401 405

DHAKA OFFICE:

bti Celebration Point
Plot: 3 & 5, Road: 113/A,
Gulshan, Dhaka 1212
Email: info@btibd.org

CHATTOGRAM OFFICE:

bti Landmark
549/646, Zakir Hossain Road
Wireless More, West Khulshi,
Chattogram.
Email: info_ctg@btibd.org

General Disclaimer:

Information contained in this brochure is subject to change. The measurements are approximate. Illustrations provided are only to facilitate presentation. Apartments are sold unfurnished. Furniture and fixtures are not part of the offer or contract. Features and amenities may vary as per availability based on market prices/design requirement/price fluctuation.