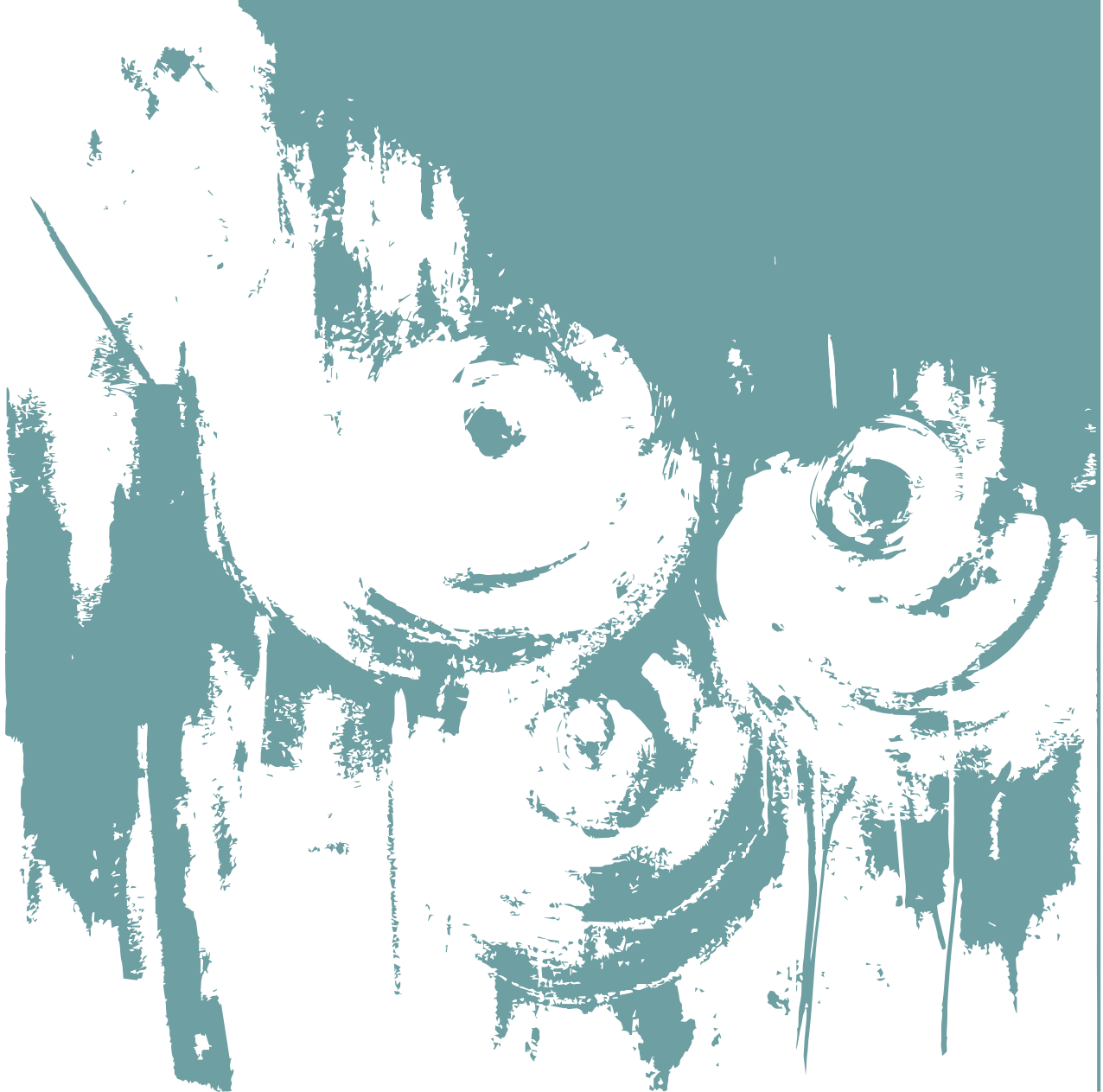




MeadowView





# MeadowView

Plot # 351, Road # 6 Block # K,  
Bashundhara R/A



## Location Highlights

### EDUCATIONAL INSTITUTIONS

- Viqarunnisa School
- Sunnydale School
- Play Pen School
- Agakhan School
- NSU
- IUB

### HOSPITALS

- Evercare Hospital
- Baridhara Hospital Ltd.
- United Hospital Limited

### SHOPPING MALLS

- Jamuna Future Park
- Rupayan Shopping Square

### GROCERY

- Mehedi Mart
- Bazar Sharabela
- Shwapno

# At a glance

DOUBLE UNIT APARTMENTS

BUILT OVER 10 KATHA

2261 & 2295 SFT APARTMENTS

4 BEDROOM HOMES

NUMBER OF FLOORS: G+9

1 HIGH QUALITY STRETCHER LIFT &  
PASSENGER LIFT

16 PARKING SPACES

RAJUK APPROVAL NO.  
25.39.0000.106.33.665.22

A Piece of Paradise for Your Family





MEADOW VIEW

A Grand Entrance to Greet You in Style



- Double Height entrance.
- The front elevation of the building will have a stylish combination of groove, glass and paint (as per design).
- Greenery enhances the stylish entrance gate with a concierge for easy monitoring of the building round the clock.
- Secured and well-designed boundary wall to match the building façade.
- CCTV monitoring system for 24/7 surveillance of the building with cameras covering all entrance points, all lift lobbies and periphery of the building as per developer's discretion.











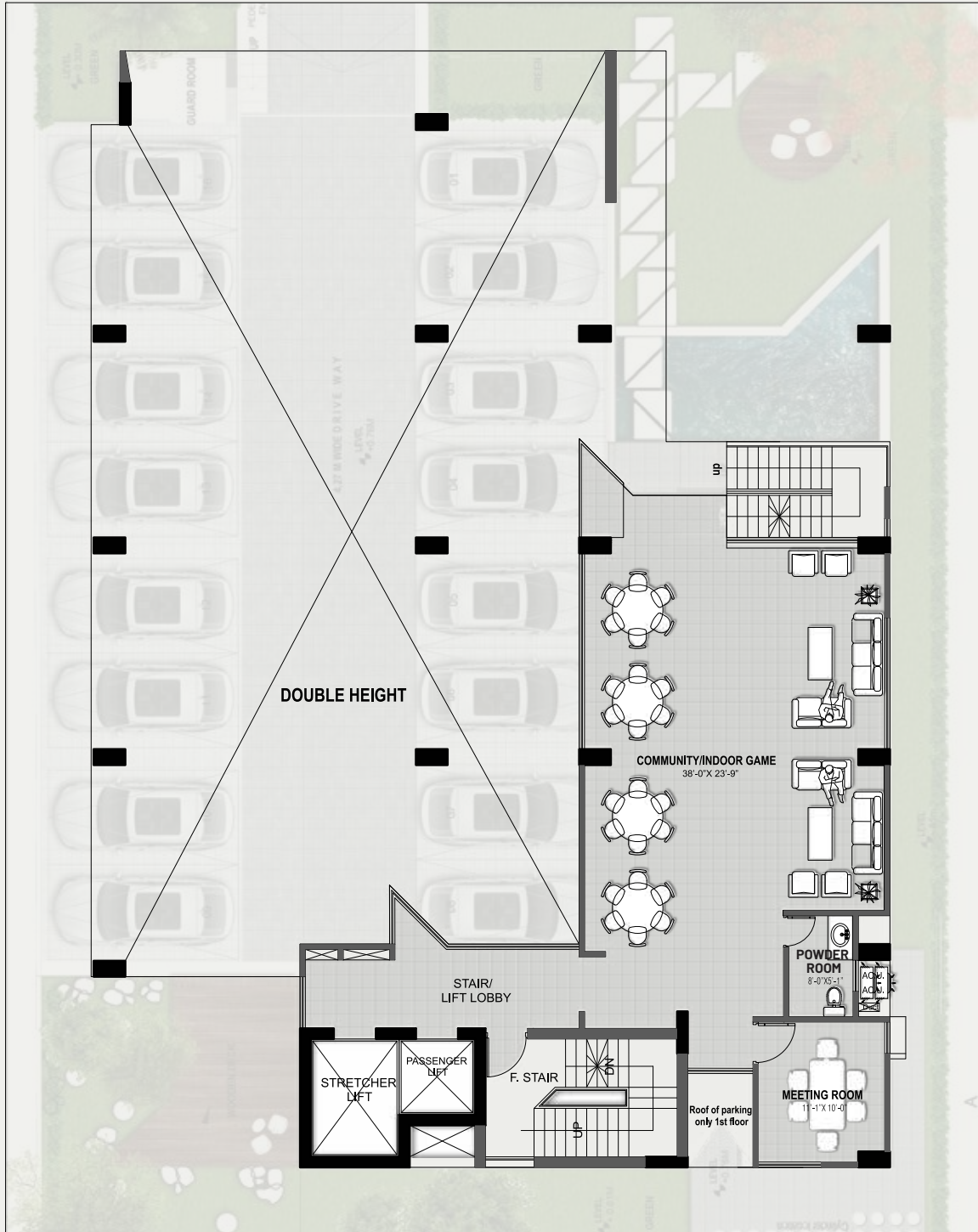
## Ground Floor Plan



### PARKING

- There will be 16 parking spaces on the Ground Floor.
- Parking spaces will be reserved and marked with respective apartment.
- Driver's waiting area with toilet facilities.
- Caretaker's room with toilet facilities.
- Intercom connection from concierge to all apartments.

# Mezzanine Floor Plan



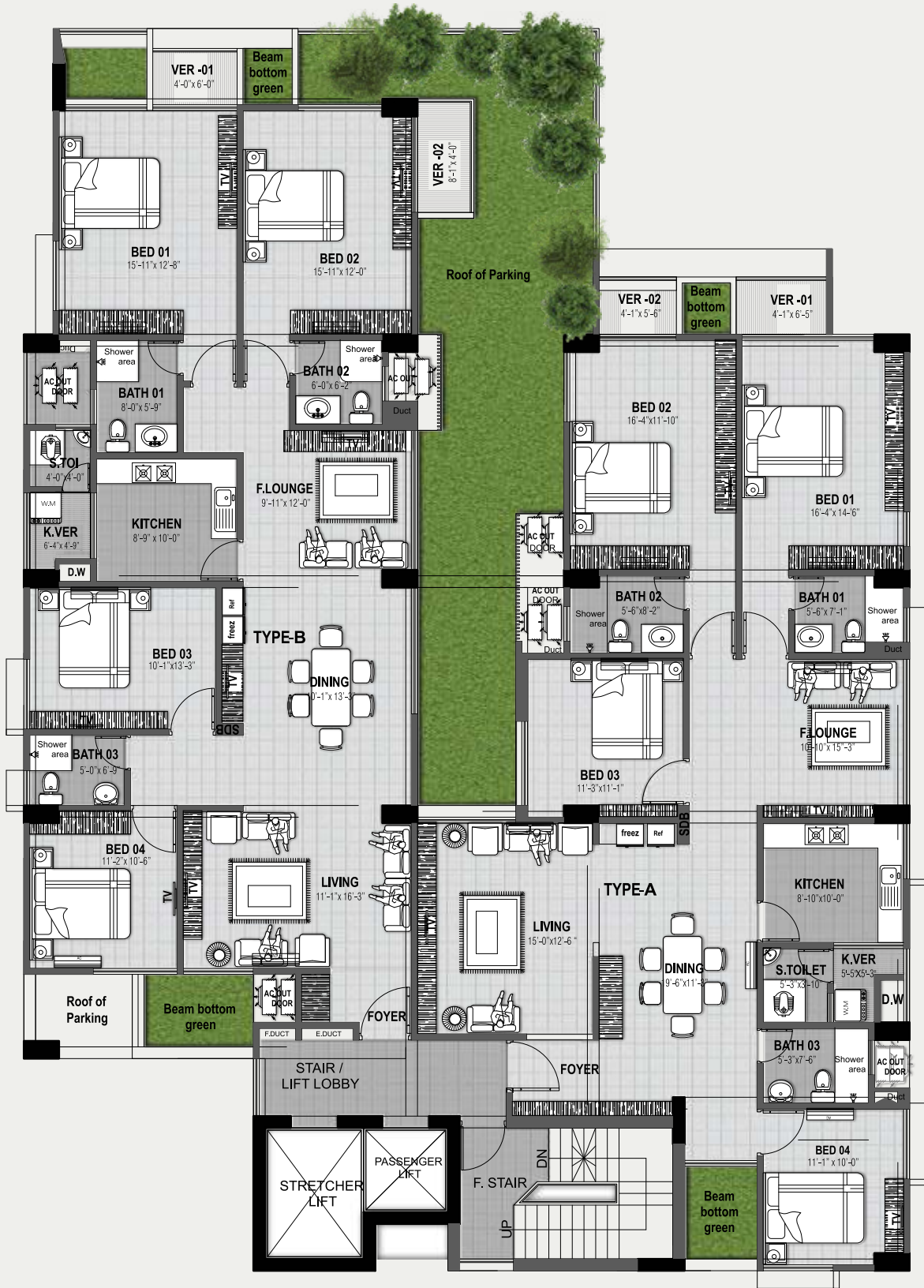
## FEATURES

- Indoor Game Room/Community Space with powder room, Meeting Room, as well as an outdoor staircase connected to the lawn area on the Ground Floor.

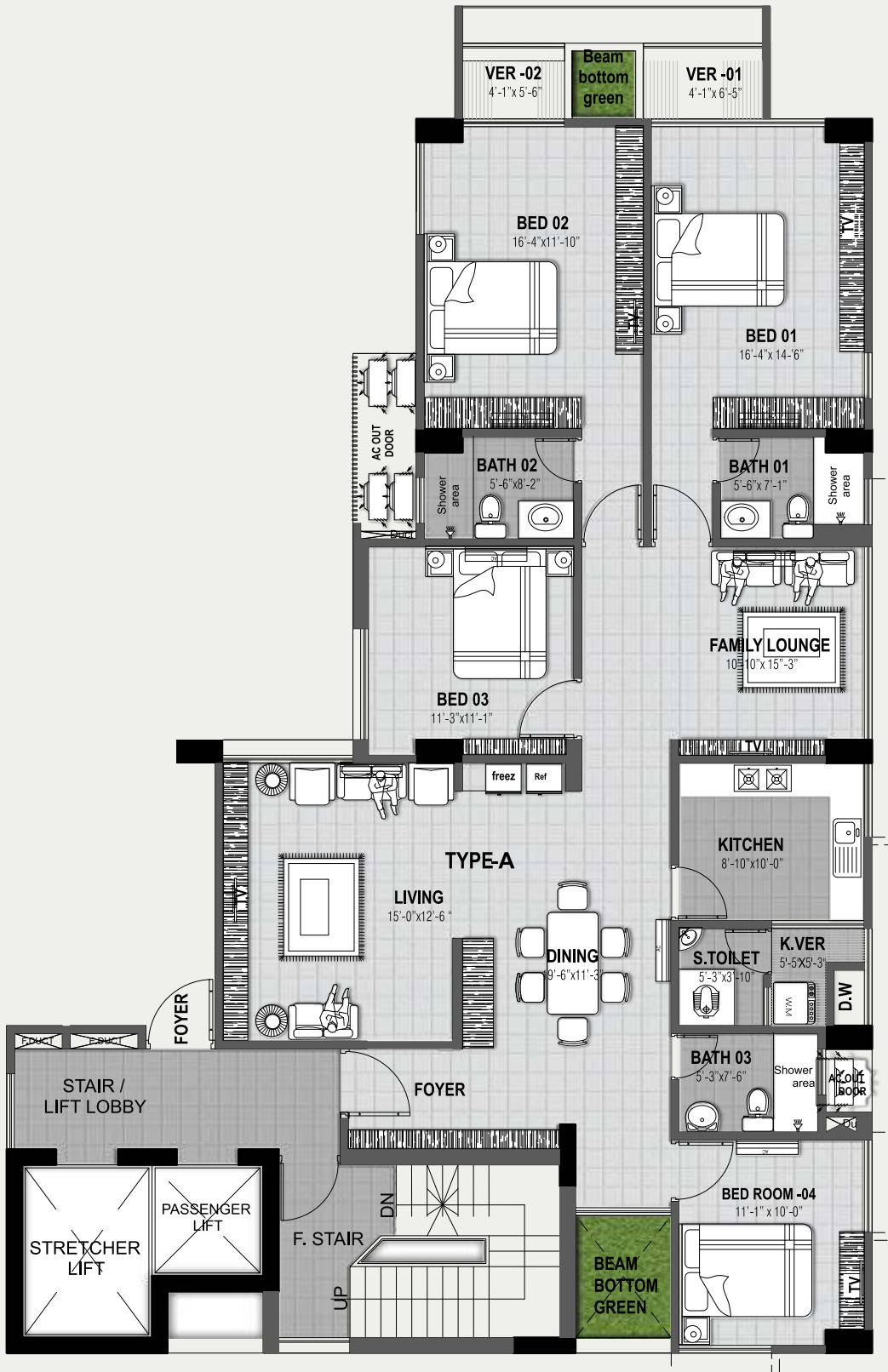


# 2nd Floor Plan

TYPE A | 2261 SFT | TYPE B | 2295 SFT



3<sup>rd</sup> Floor Plan  
TYPE A | 2261 SFT



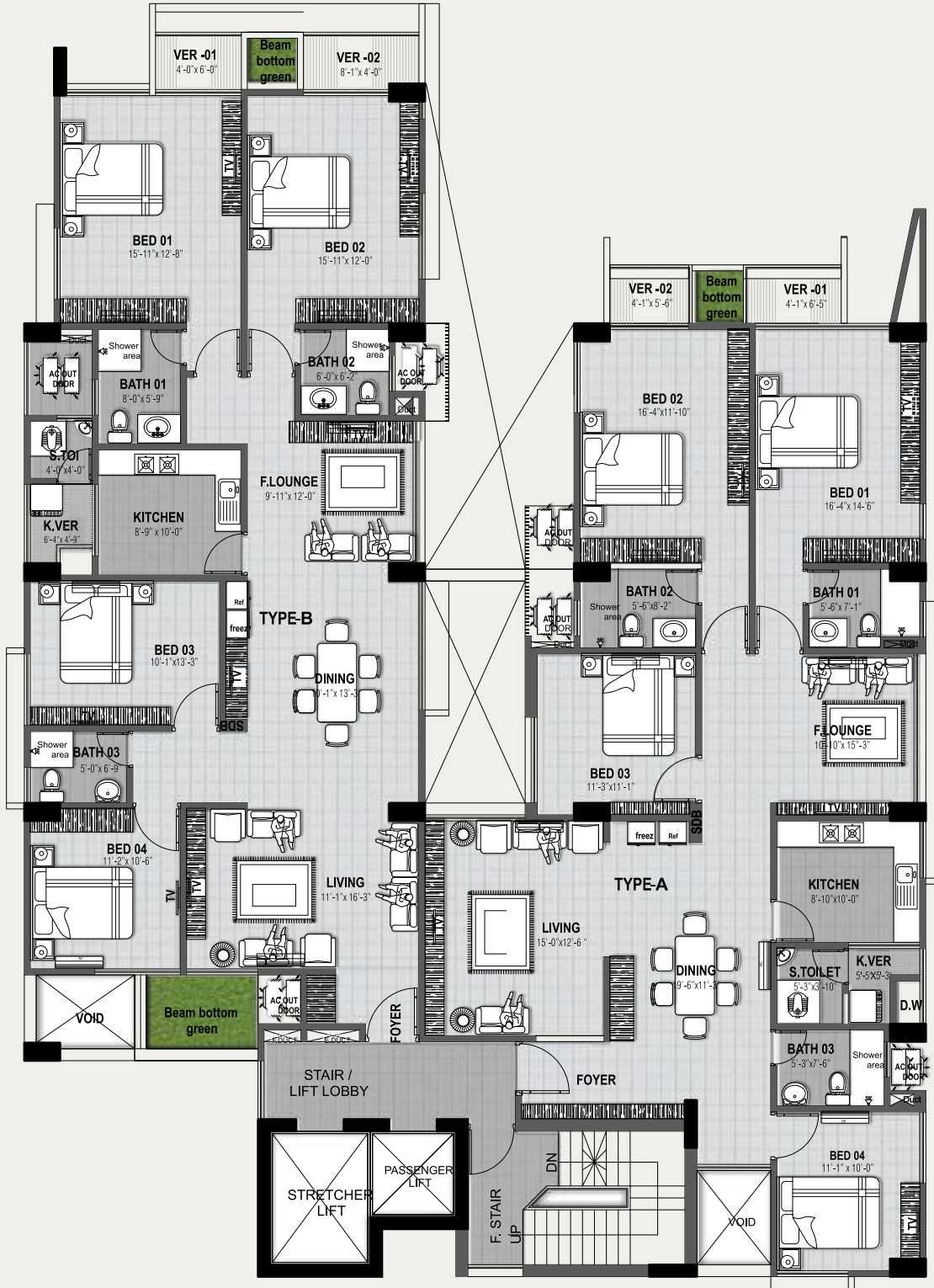
4<sup>th</sup> Floor Plan  
TYPE B | 2295 SFT





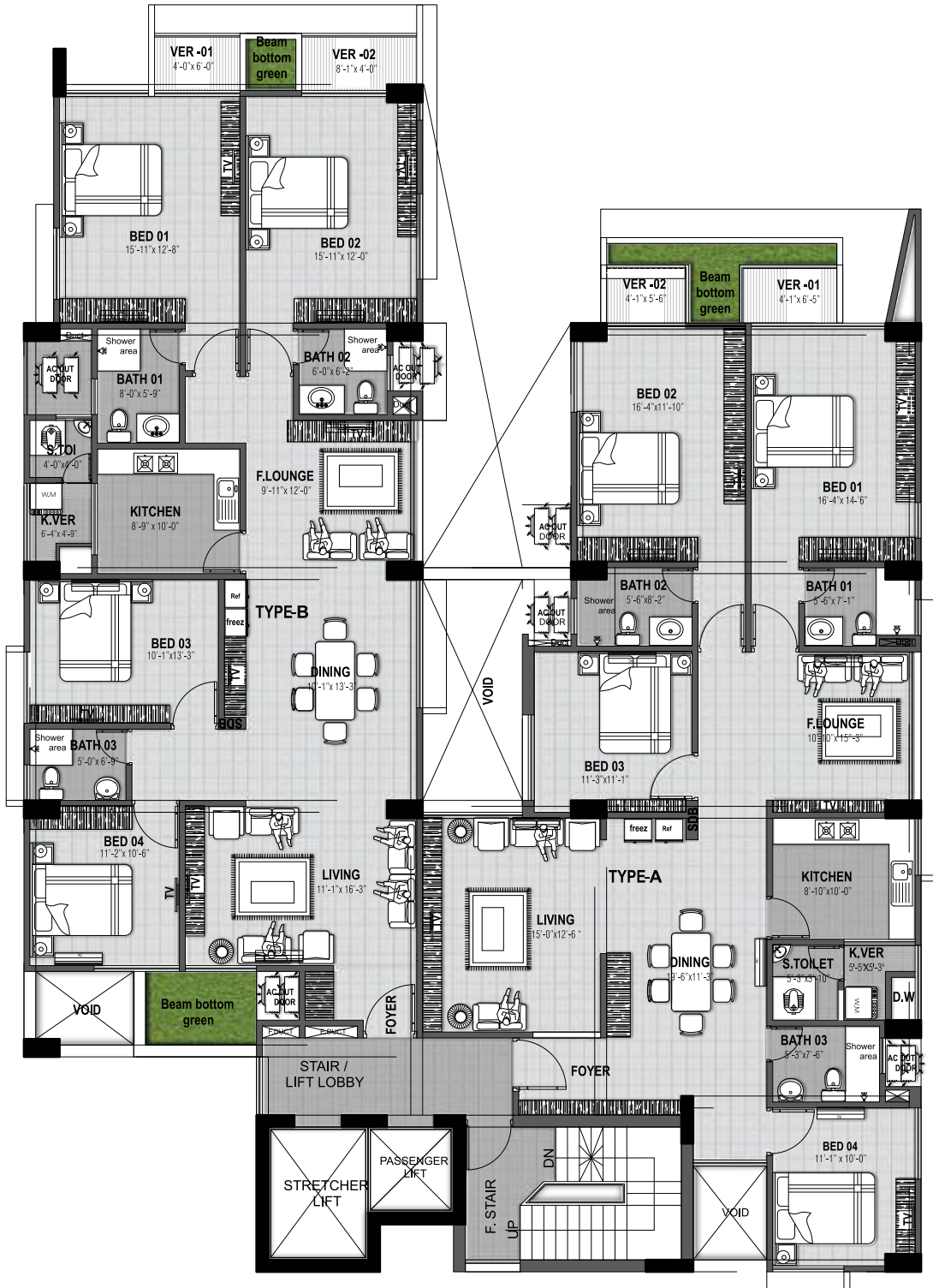
# 6<sup>th</sup> Floor Plan

TYPE A | 2261 SFT | TYPE B | 2295 SFT



# 8<sup>th</sup> Floor Plan

TYPE A | 2261 SFT | TYPE B | 2295 SFT



# Rooftop Plan





# Rooftop features

- Landscaped rooftop.
- BBQ area with portable BBQ tray.
- Lime terracing of adequate thickness for protection from heat.
- Protective parapet wall/ railing 4'-0" high around the periphery.
- Separated clothes drying area with lines for drying laundry.







Discover the Perks of Nature Here





MAKE THE RIGHT MOVE  
by choosing a bti home

We provide fire-protected doors, fire hydrants, fire alarms & fire extinguishers to mitigate any chance of fire damage.

An earthquake-resistant design by a team of experienced and qualified civil engineers to ensure the highest quality of workmanship and safety.

The structural strength of our building materials is checked in quality-controlled labs at every stage of construction.

Our unparalleled customer service focuses on fulfilling all commitments on time, to ensure our customers are more than just happy with us.







Ask us about Square Feet Story  
to help you perfect the interiors as per your need

SQUARE FEET®  
**STORY**  
by bti  
DESIGN & BUILD

A Shining Example of the Perfect Home



# f Apartment features

FLOORS	24"x24" mirror polished imported tiles in foyer, bedrooms, living room, dining cum family lounge area & all verandahs. kitchen verandah with non-slippery tiles made in Bangladesh matched to the floor scheme. Concrete flooring for AC outdoor unit spaces
MAIN DOOR	Solid Chittagong Teak 3'-9"x 7' main entrance door with door chain, door handle with Smart fingerprint access door lock, one look-over camera & 2-way voice support function.
INTERNAL DOORS	7' high French polished veneer door shutters with teak chamble door frame for all internal doors except bathrooms. Cylindrical lock on all internal doors.
SLIDING DOORS & WINDOWS	Sliding glass windows and doors used as per floor plan, complete with mohair lining, rainwater barrier and fly-proof netting.
BASIN PROVISION	Provision for basin in the dining area.
SECURITY & SAFETY	Safety grills on windows & full height grills on kitchen verandahs.
PAINTING	Smooth finished plastic paint on all internal walls & ceilings.
ELECTRICAL	Imported gang-type electrical switches, plug points, and other fittings. Provision for air conditioners with power points in all bedrooms, living room, dining cum family lounge area as per electrical design. Internet connection point in dining cum family lounge area. Staff calling bell switch in the master bedroom. Remote control light and fan switch in the living room and dining cum family lounge area.
LIGHTS	Provision for wall brackets in all bedrooms, dining cum family lounge, and common areas. Appropriate lighting in all bathrooms, kitchen & verandahs.
CABLE CONNECTIONS	Concealed television line in all bedrooms and family lounge area.

## Bathroom features

DOOR	Wood Plastic Composite (WPC) door shutter with teak chamble solid door frames.
SANITARY WARE	Imported sanitary ware.
C.P. FITTINGS	C.P fittings & Accessories made-in-Bangladesh.
SHOWER AREA	Customized shower area with curtain rail as per design.
TILES	Wall tiles up to 7' height and floor tiles made-in-Bangladesh.
COUNTER TOPS & BASINS	Marble countertop imported cabinet basin in the master bathroom and other bathrooms will have imported pedestal basin as per the developer's choice. Mirrors in all bathrooms.
WATER LINE	Concealed hot & cold water lines in all bathrooms including the staff bathroom.
STAFF BATHROOM	Wall & floor tiles with long pan & moving shower all made in Bangladesh.

## Kitchen features

PLATFORM	Granite in kitchen countertop.
WALL & FLOOR TILES	Wall tiles up to 7' height and floor tiles made-in-Bangladesh.
WATERLINE	Concealed hot & cold water line.
SINK	Single bowl sink.
GAS CONNECTION & DETECTOR	LPG connection for oven/stove with gas detector connected to prevent potential fire hazard through gas leakage.

## LIFT, LOBBIES & STAIRCASES

1(One) high-quality Stretcher and 1(One) 8-passengers lift (from a reputed international manufacturer as per developer's choice) to be installed with auto voltage regulator, inverter, adequate lighting, full-height photocell sensor, and emergency alarm, mirrors on the wall, handpone, stainless steel mirror etching finish on the doors at the ground floor and hairline finish on other floors.

Tiled staircase for easy maintenance and a clean look. Tiled floors with attractively designed lift walls will complete the elegant look of lift lobbies on every floor.

Lift to have Plasma Air inside lift cabin. Sliding window in stair landing to ensure light and ventilation.

Sliding window in stair landing to ensure light and ventilation.

## GENERATOR

A diesel run emergency auto start/stop canopied generator will be imported from Europe for use in case of power failure with:

1. Engine-Perkins/Cummins or good quality as per developer's choice.
2. Alternator- Stamford/ Mecc-Alte or good quality as per developer's choice.

Generator will support the following:

1. Lift, water pump and lighting in common space and stairs.
2. One light and one fan point in every room, one light point in kitchen and all bathrooms.
3. One point for refrigerator and one point for television.

## WATER

Underground water reservoir with lifting pump to store two days' consumption capacity.

An overhead water tank above the rooftop with capacity to serve half day requirement.

One standby water pump for emergency.

Deep Tube Well.

Note: All optional work or additional fittings and fixtures (according to customers' choice) may be done at an additional cost after approval of bti. Kitchen cabinets and built-in wardrobes may be ordered separately at an additional cost. Interior design consultation set up through bti is also available at an extra cost.

Spend Delightful Days in Your Dream Home







bti has added to its portfolio a number of business services in many aspects of the real estate market and beyond. These business services have been created not only to serve the bti customers but also serve those who believe in our reputation as a company well-known for its business ethics and expertise that has been carefully built up through 40 years of serving customers.





**DHAKA OFFICE**

bti Celebration Point

Plot: 3 & 5, Road: 113/A, Gulshan, Dhaka 1212

email: [info@btibd.org](mailto:info@btibd.org)

**CHATTOGRAM OFFICE**

bti Landmark

549/646, Zakir Hossain Road

Wireless More, West Khulshi, Chattogram.

email: [info\\_ctg@btibd.org](mailto:info_ctg@btibd.org)

**btibd.com** | **☎ 16604**  
**WHATS APP +880 1313 401 405**



...SINCE 1984