



**THE PEAK**  
ECB CIRCLE





# YOU MUST BE FIT!

ENJOY THE BEST AMENITIES THAT ENSURE YOU A HEALTHIER PHYSIQUE, SOUND MENTAL HEALTH,  
AND POSITIVE LIFESTYLE, ALL IN A HAPPY COMMUNITY.





# Wellness *Features*



50% Open Space



Green Forest



Kids' Play Area



Swimming Pool



Gym with Outdoor Area



Walking Track



Outdoor Exercise Area



Meditation Center



Sauna Room



Yoga Studio



Library & Study Corner



Community Hall



Masjid



Open-to-Sky Green Terrace





A proud BUET alumni and current principal architect at Shatotto, Professor Rafiq Azam is a celebrated figure both in Bangladesh and abroad. He has won countless accolades, including Berger Awards for Excellence in Architecture, World Architecture Community Awards, LEAF Awards, and many more. He was featured in 2018 Architectural Digest's 100 Most Influential Names in Architecture. Recently, he won the Robert Mathew Lifetime Achievement Award 2022 and has been featured in Time Magazine as an 'ecopreneur'.



INTERNATIONAL AWARD WINNING ARCHITECT  
**RAFIQ AZAM**



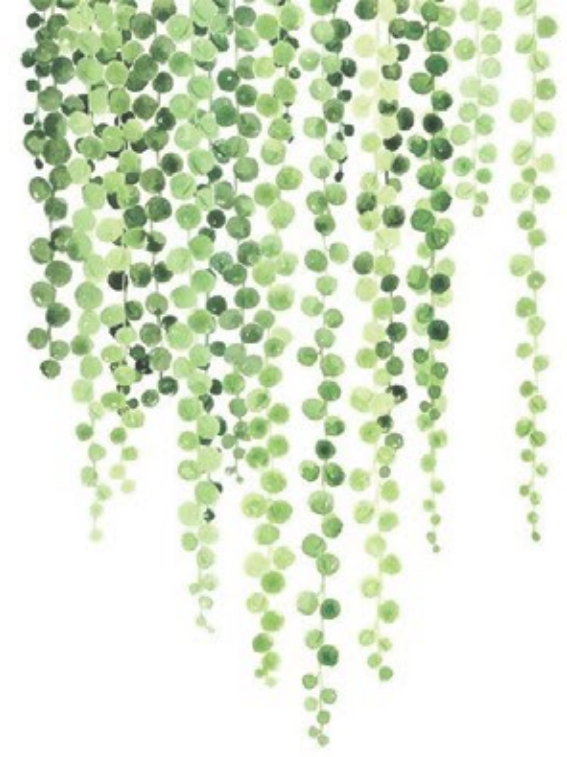


A R C H I T E C T

# TAWFIQ KALAM SUHAS

With 16+ years of experience in architectural design, Tawfiq Kalam Suhas has carved his own niche in his field. He has gained considerable expertise in building multistoried residential projects. His preference to design contemporary yet comfortable spaces has garnered him immense success. Designing innovative concepts in luxury homes and wellness communities drives his creative spirit. The Peak is a testament to his passion and commitment to pursue excellence.





# *D*ESIGN *philosophy*

“ Our main motto was to make life eventful.  
Residents here can taste the full spectrum of life. ”

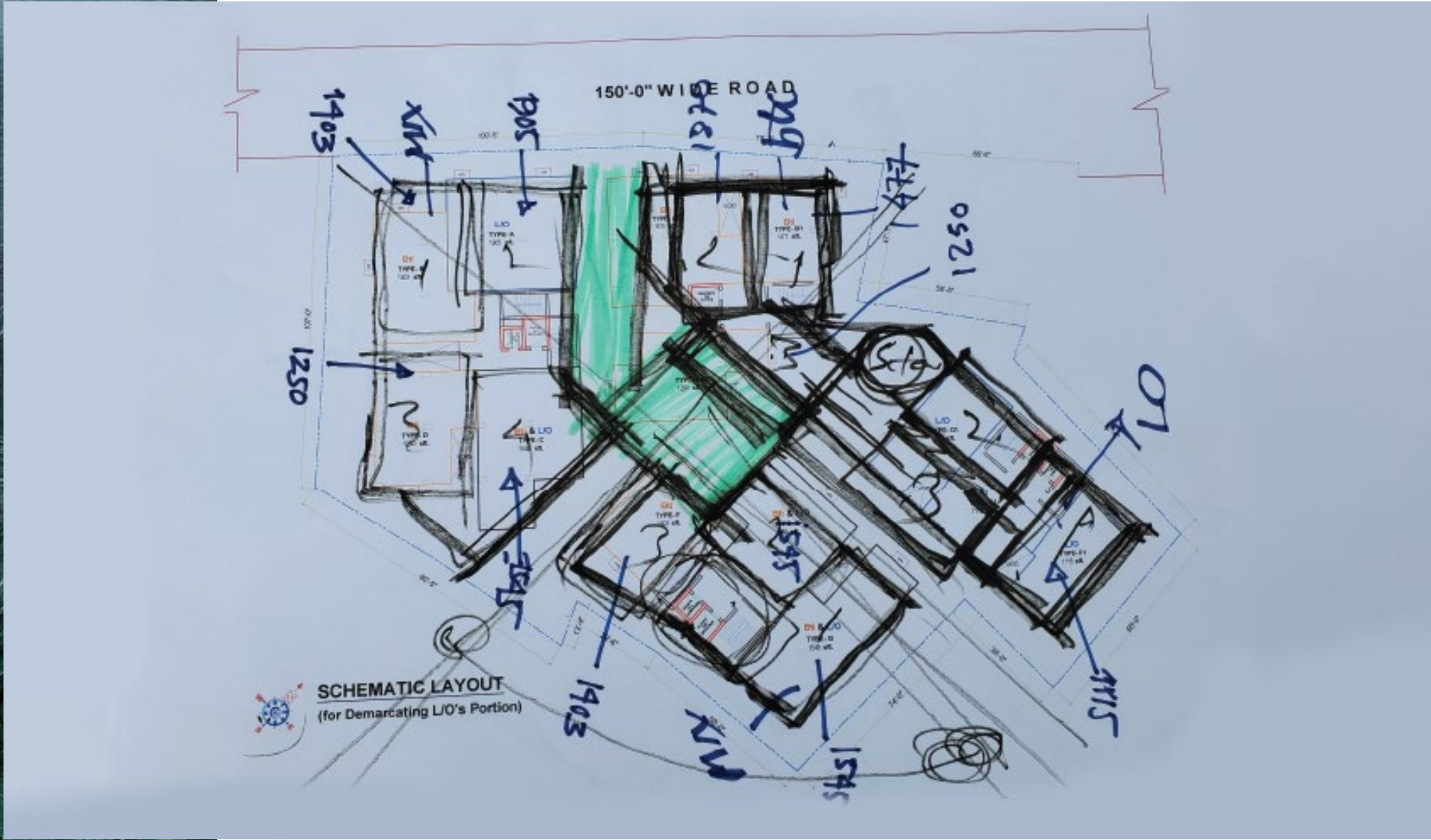






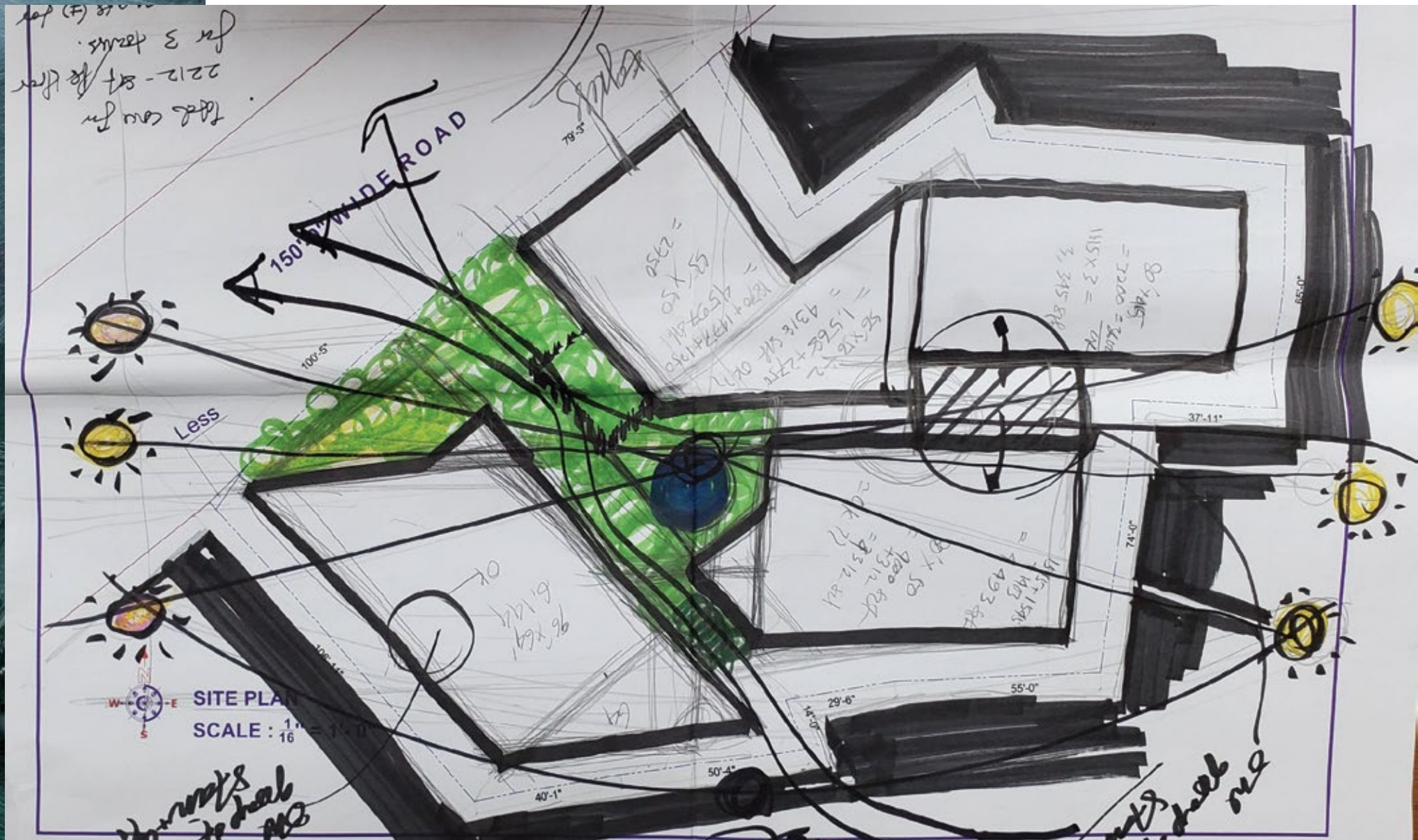
Architects on  
Site Envisioning  
**THE PEAK**





First Sketch by the Architects





Sun Path Diagram  
& Schematic Layout  
by Architects





TO BREATHE • TO GROW • *To Enjoy*







# THE PEAK

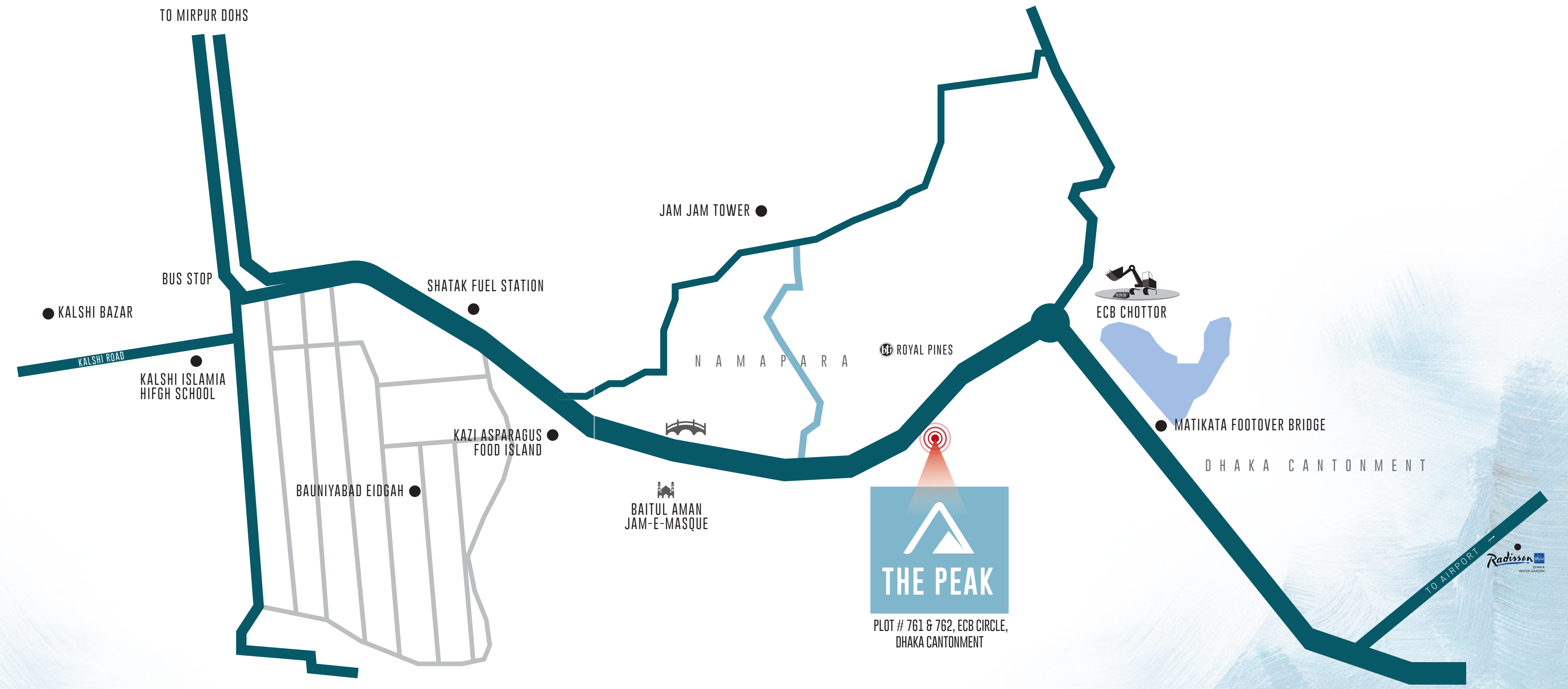
Three interconnected towers are immersed in lush greenery and spread with open space. Its grandiose double-height entrance easily makes you feel welcome into the community.





# LOCATION HIGHLIGHTS

- Armed Forces Medical College & Hospital
- Combined Military Hospital
- Nirjhor Cantonment Public School & College
- Dhaka Cantonment Girls' Public School & College
- Shaheed Ramiz Uddin Cantonment College
- Kazi Food Island | Cafe & Boat Club
- Hunger Zone | Palm View Restaurant
- Nishorgo Park | Radisson Blu Dhaka
- PSC Convention Hall | Army Golf Club
- Meena Bazar



PLOT # 761 & 762, ECB CIRCLE, DHAKA CANTONMENT



The Peak is only a few minutes away from the vibrant neighborhoods in Banani and Dhaka Cantonment. As a resident you can also easily enjoy the best amenities of Mirpur DOHS, Mirpur-11 & Mirpur-12 which are simply a stone's throw away!







at a  
*glance*



Plot # 761 & 762, ECB Circle,  
Dhaka Cantonment



Built over 48 katha



Number of Towers: 3



1166-1947 sft  
Apartments



2677-3419 sft  
Duplex Apartments



Facing: North & East



167 Parking



150 ft Wide Road



3 Stretcher Lifts &  
3 Passenger Lifts



3/4 Bedrooms'  
home



RAJUK Approval No:  
25.39.0000.098.33.1032.21





CLOSE TO NATURE





## FLOOR PLANS

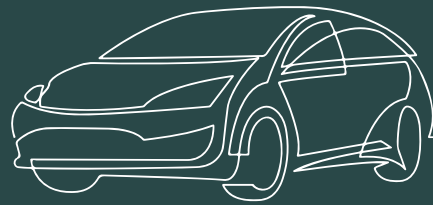
The Peak consists of three towers that are connected harmoniously together. Each 14-storied tower has Smart homes to offer you extra comfort and convenience. Tower 1 has a duplex unit and rooftop amenities including a swimming pool, gym with outdoor space, and a spacious community hall. Tower 2 has a mosque and study corner for those who need peaceful moments time to time, and a top floor duplex unit as well. Tower 3 has a wide range of apartment sizes for you to choose from!

Tower 1 (Type B): G+14 Floors (Top 2 Floors Duplex Unit)

Tower 2: G+14 (Top 2 Floors Duplex Unit)

Tower 3: G+14





**167** Parking Spaces on  
the Ground Floor & Two Basement Floors





**83 PARKINGS** ON  
 BASEMENT FLOOR 1





**32 PARKINGS** ON  
BASEMENT FLOOR 2





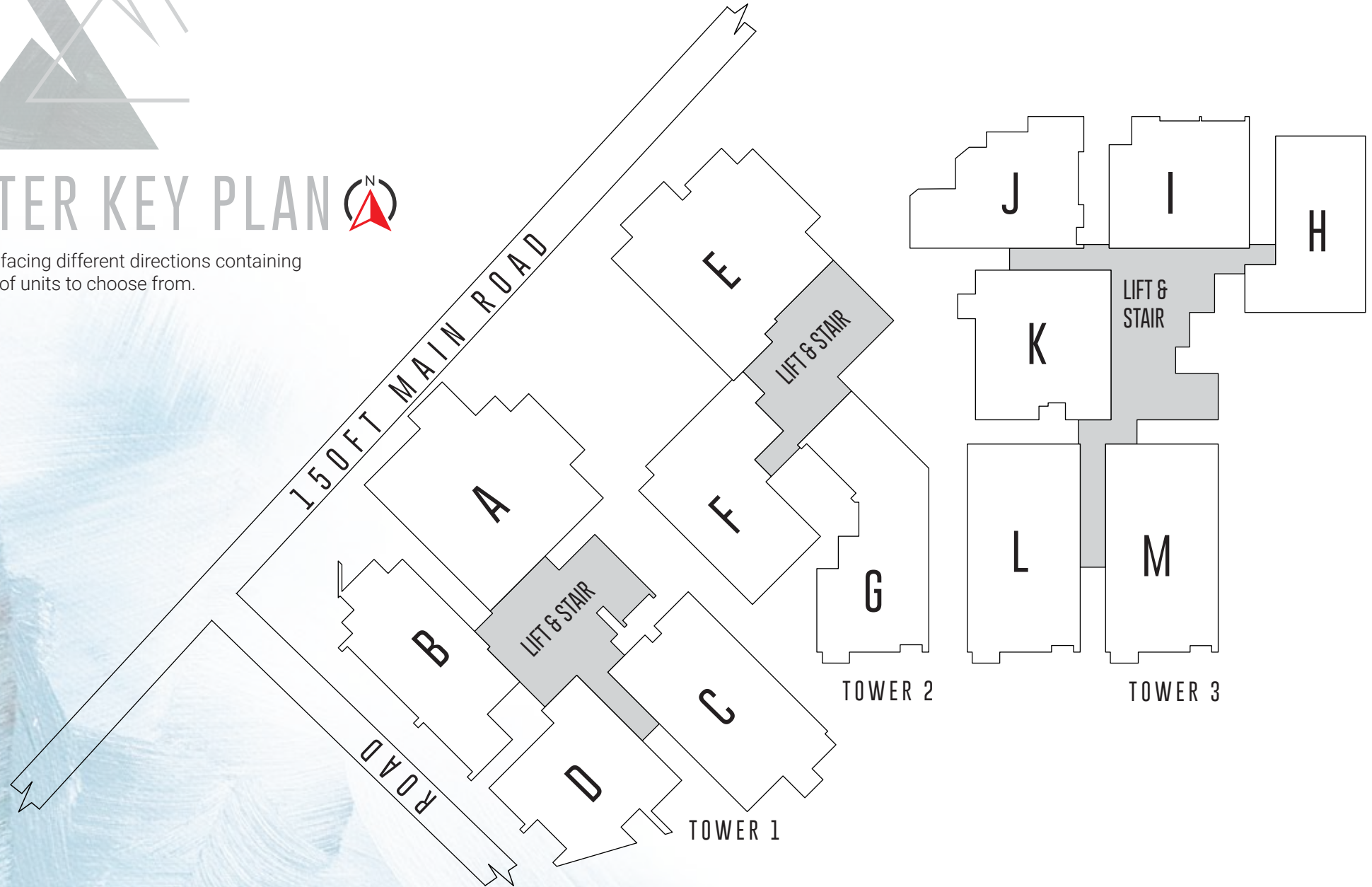
**52 PARKINGS** ON  
GROUND FLOOR PLAN





# MASTER KEY PLAN

Three towers facing different directions containing various sizes of units to choose from.



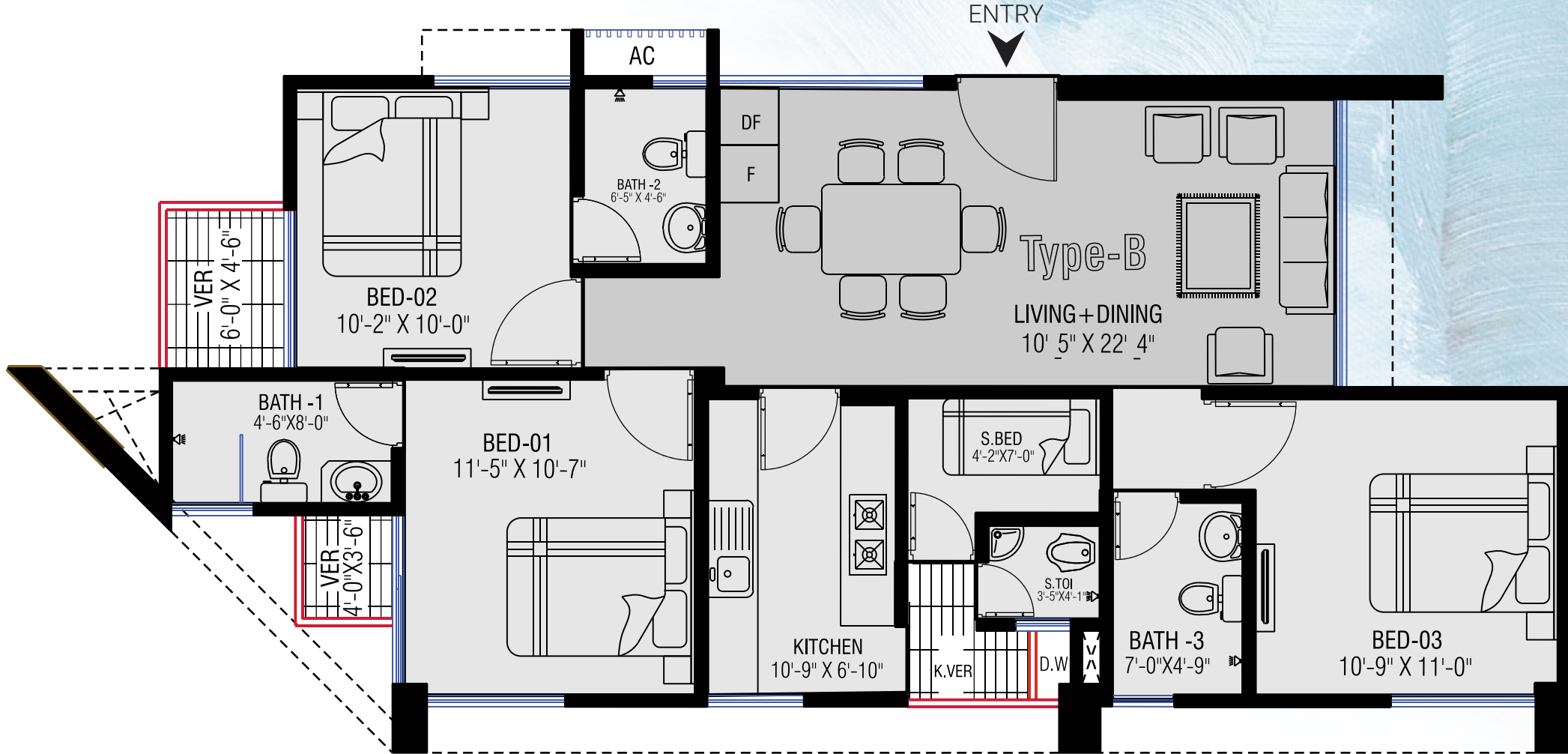




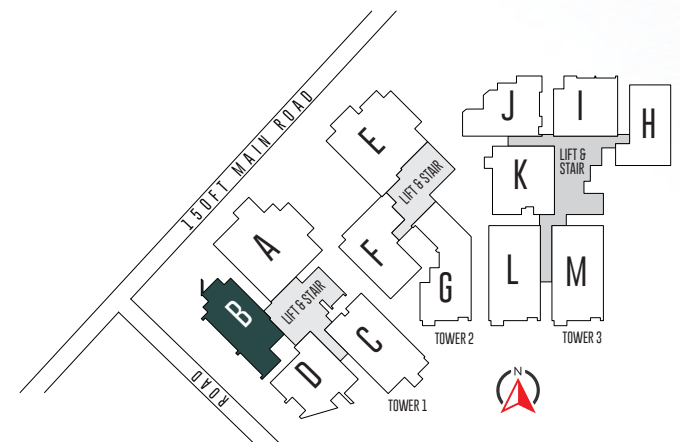
FLOOR PLANS

---

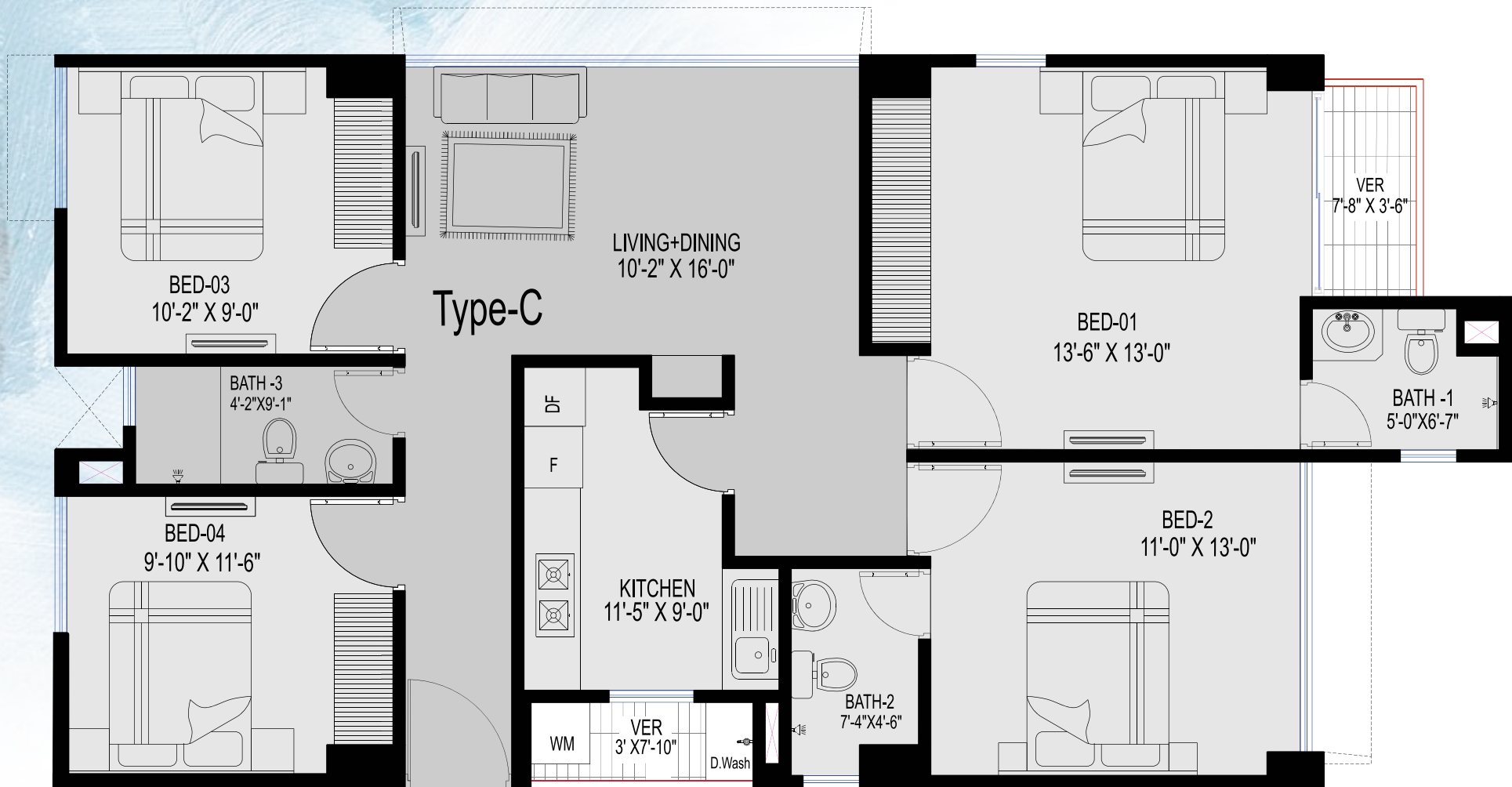




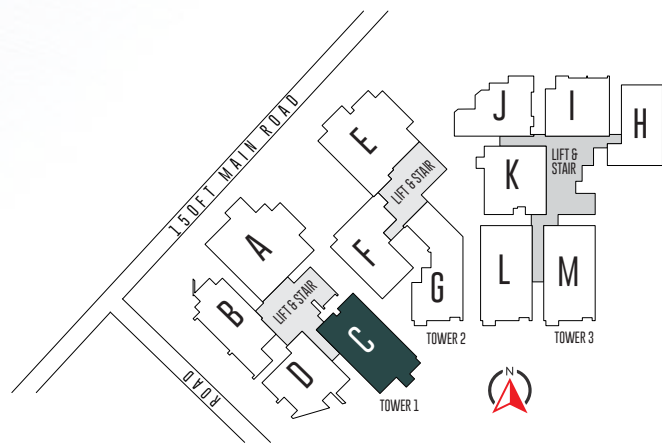
TOWER-1 (TYPE B)  
**1306 SFT**  
 2ND-11TH FLOOR







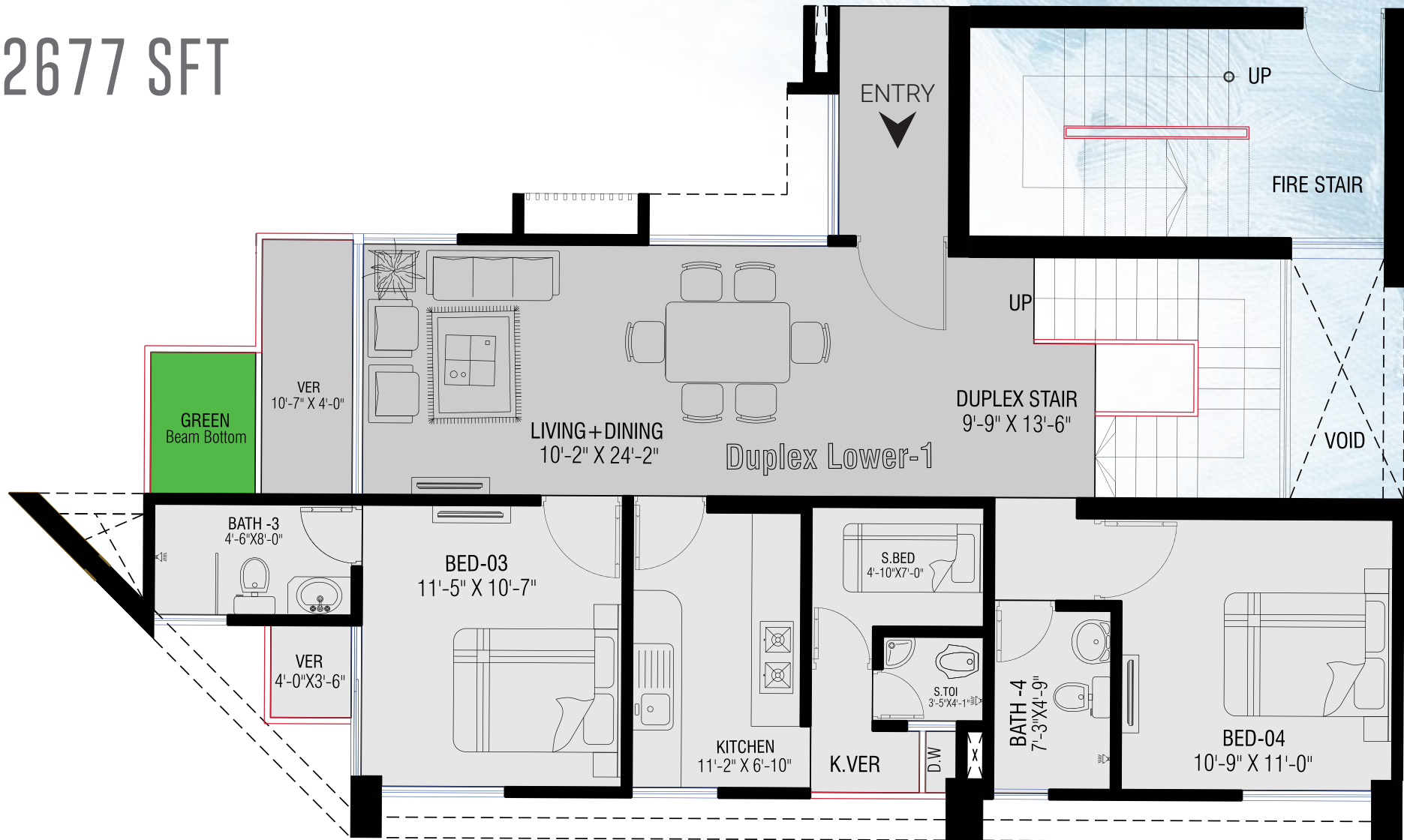
ENTRY



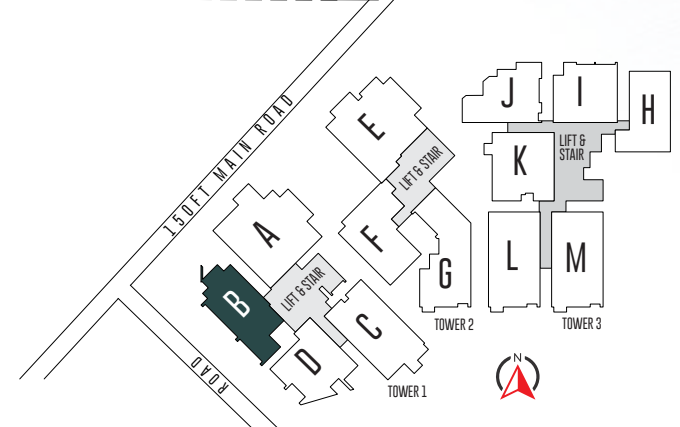
TOWER-1 (TYPE C)  
**1567 SFT**  
 1ST-13TH FLOOR



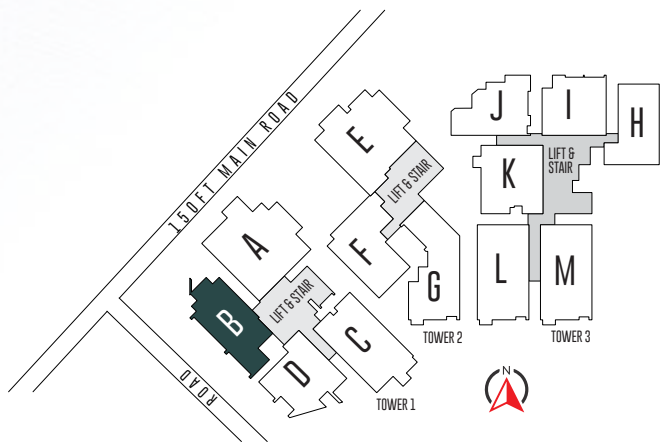
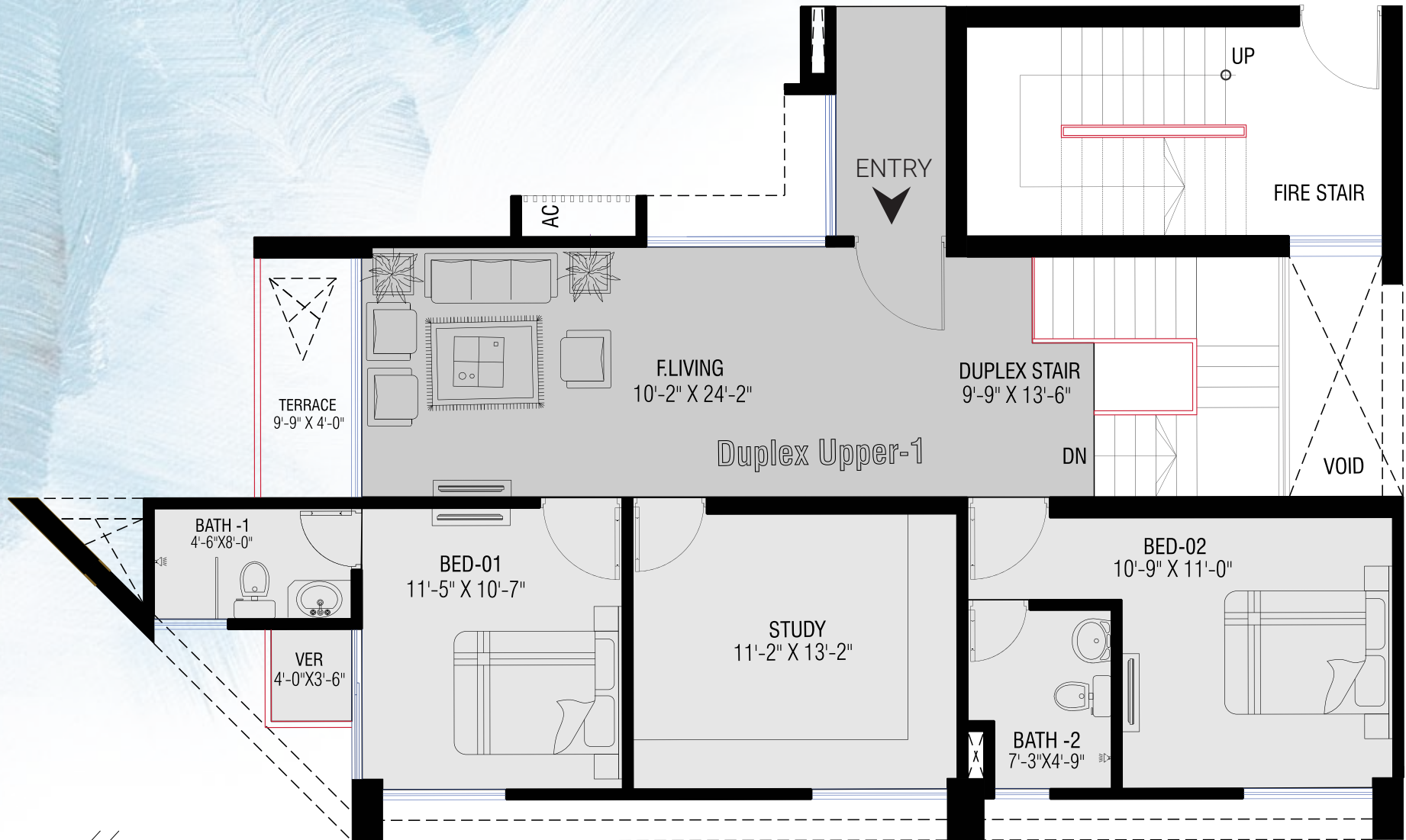
2677 SFT



TOWER-1 (DUPLIX LOWER)  
12TH FLOOR



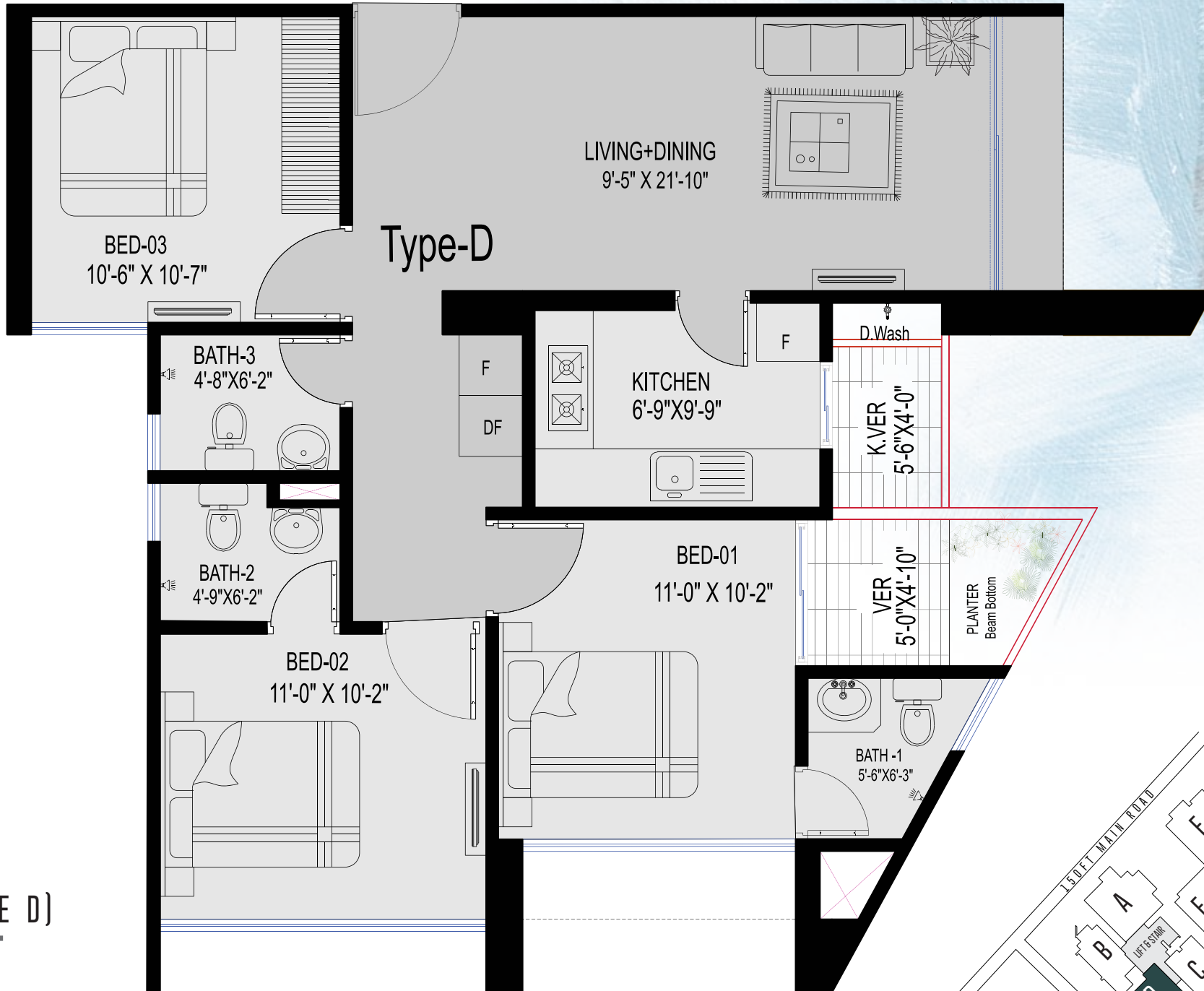




**TOWER-1 (DUPLEX UPPER)**  
**13TH FLOOR**



ENTRY



Type-D

LIVING+DINING  
9'-5" X 21'-10"

BED-03  
10'-6" X 10'-7"

BATH-3  
4'-8" X 6'-2"

KITCHEN  
6'-9" X 9'-9"

D.Wash

K.VER  
5'-6" X 4'-0"

BATH-2  
4'-9" X 6'-2"

BED-01  
11'-0" X 10'-2"

VER  
5'-0" X 4'-10"

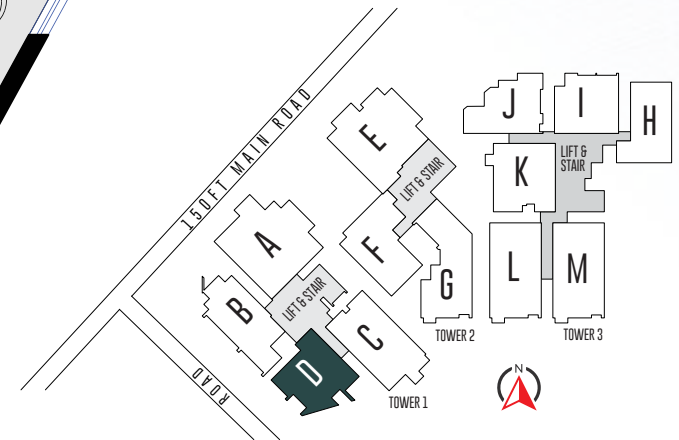
PLANTER  
Beam Bottom

BED-02  
11'-0" X 10'-2"

BATH-1  
5'-6" X 6'-3"



TOWER-1 (TYPE D)  
**1233 SFT**  
 1ST-13TH FLOOR

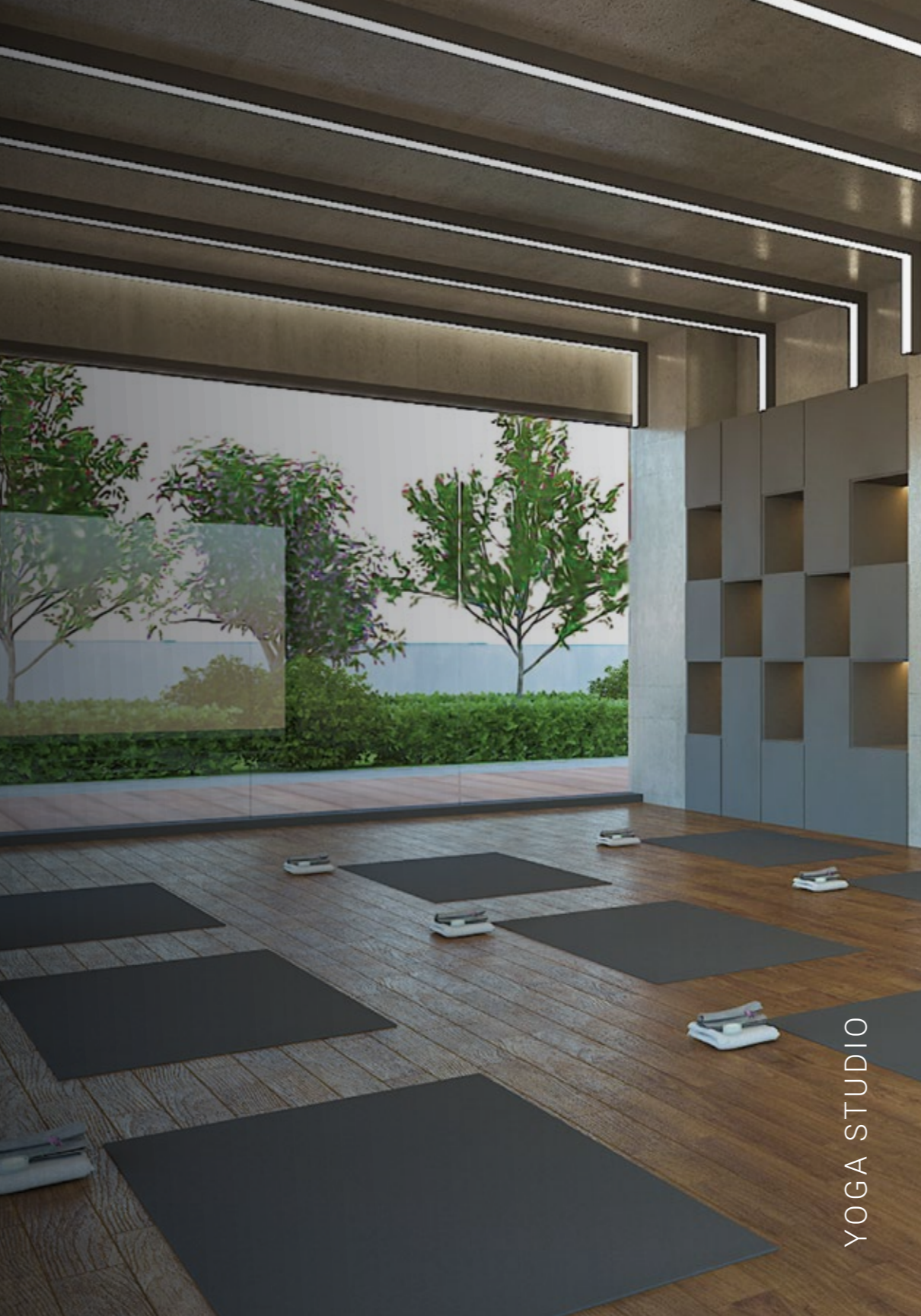
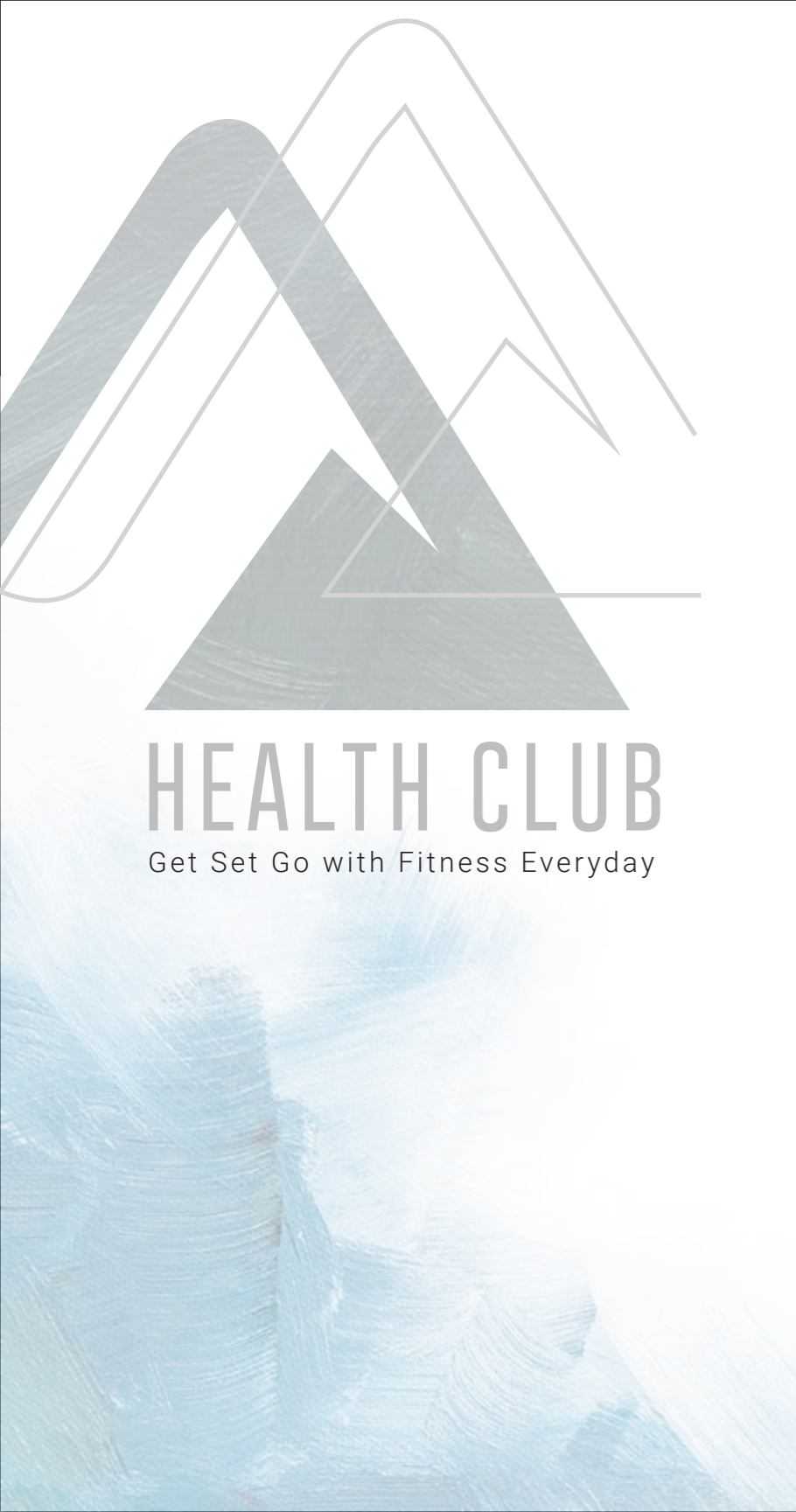






TOWER-1 ((WELLNESS FACILITIES)  
**14TH FLOOR**









# OUTDOOR EXERCISE AREA

Exercise under the *Sun* & gain Vitamin D

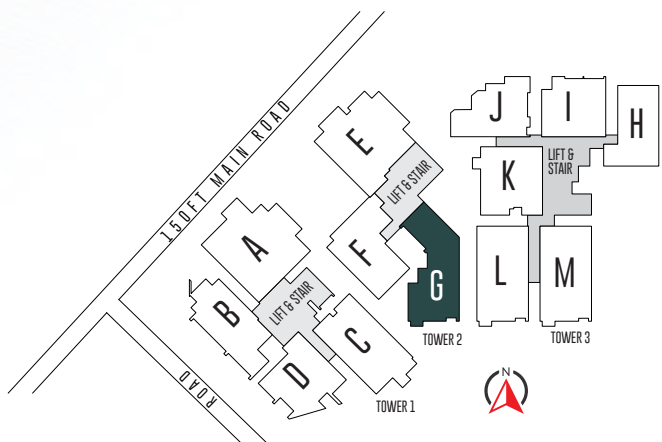
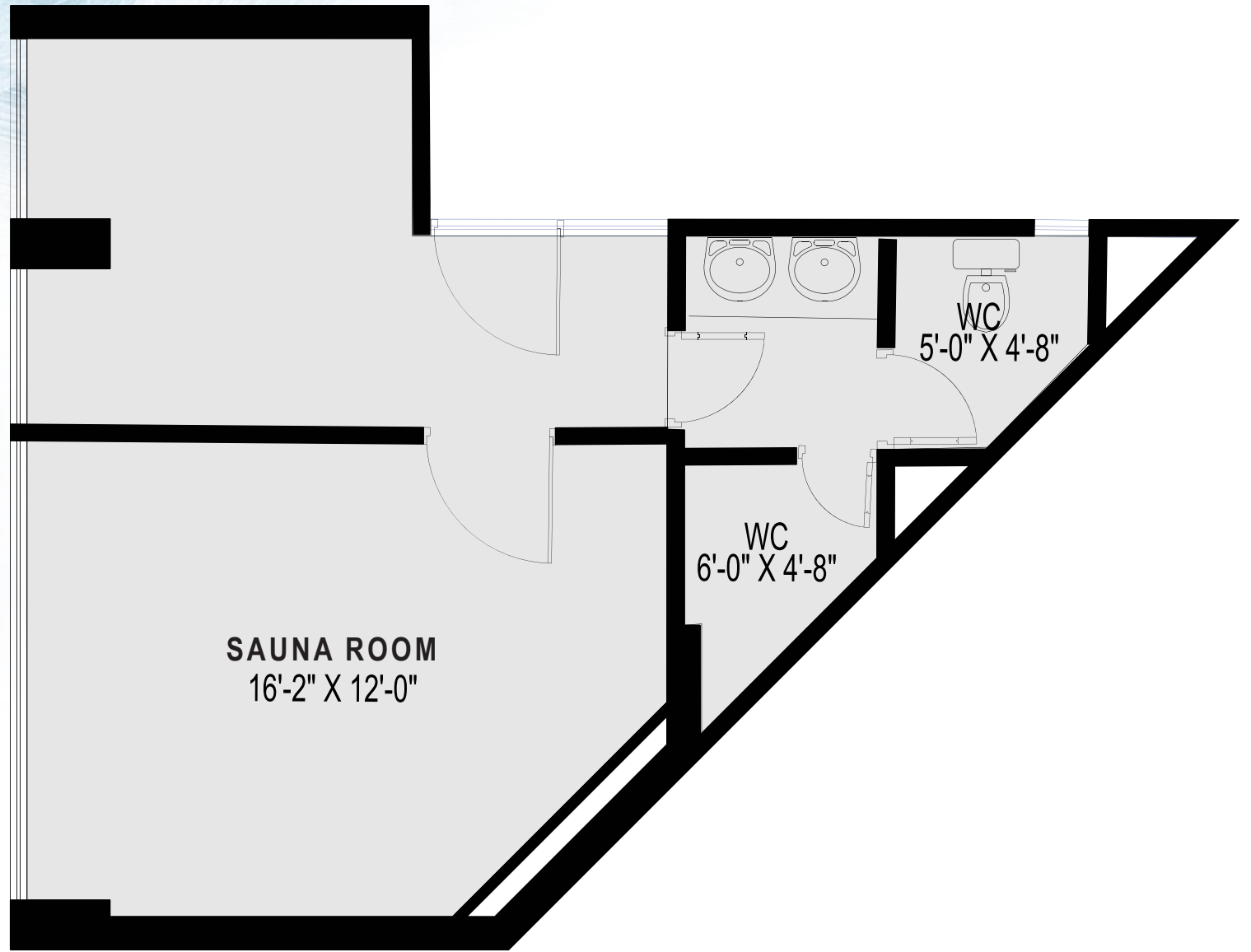




# COMMUNITY HALL

Relish Festivities & Social Events





  
TOWER-2 HEALTH CLUB (SAUNA)  
**1ST FLOOR**

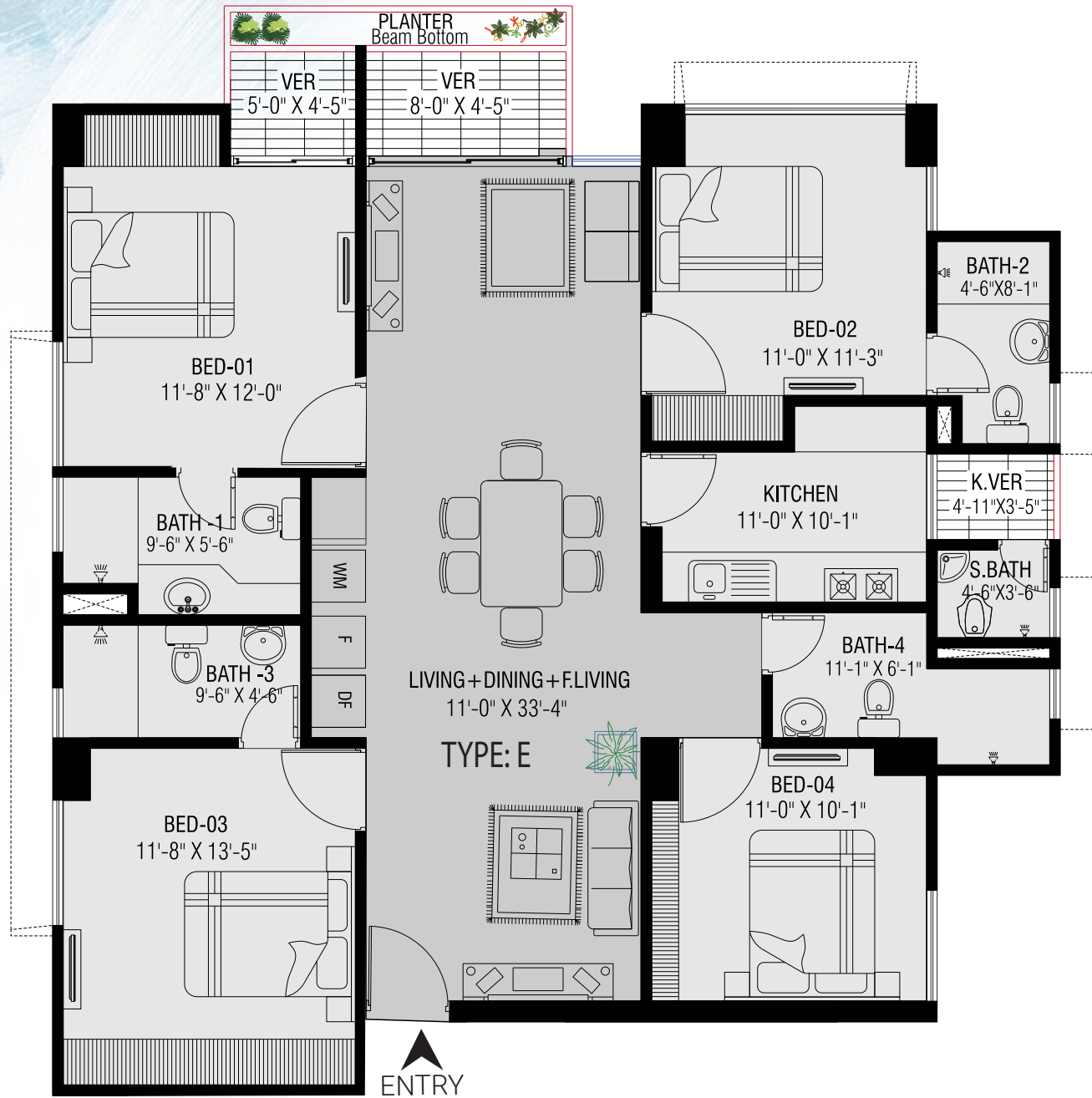
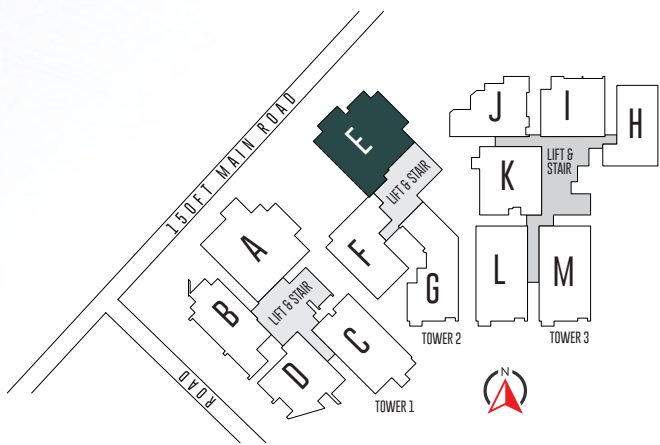




# SAUNA ROOM

Revitalize Your Body & Mind



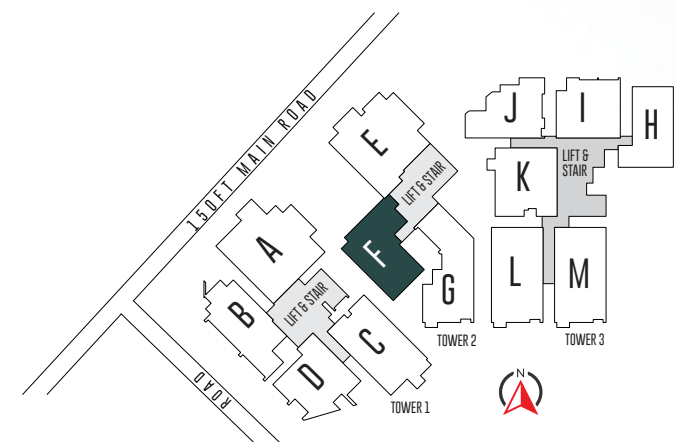


TOWER-2 (TYPE-E)  
1947 SFT  
1ST-12TH FLOOR

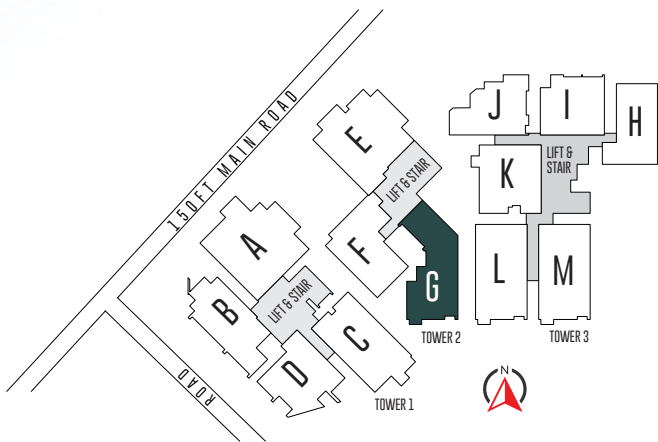
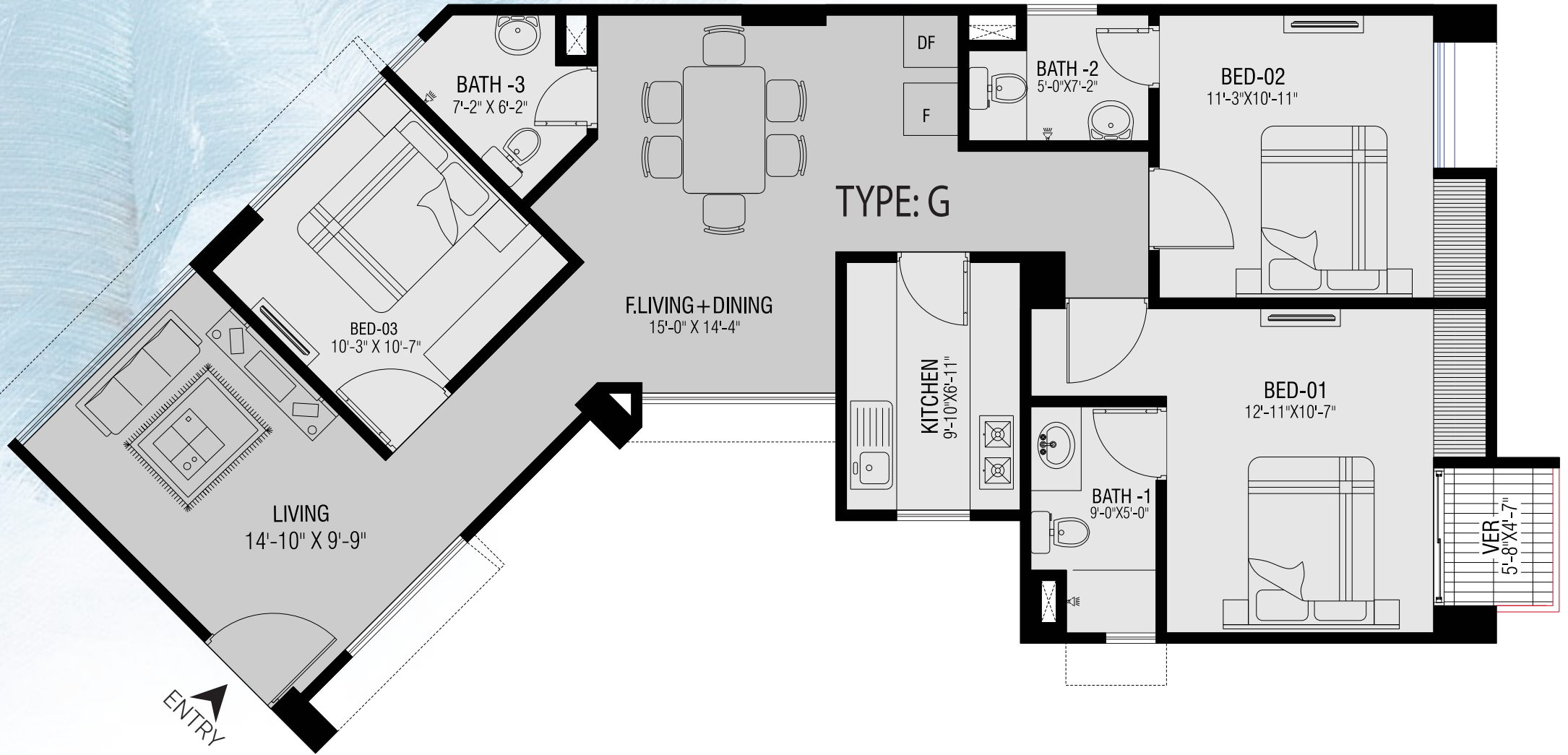




TOWER-2 (TYPE F)  
**1397 SFT**  
 2ND-9TH FLOOR







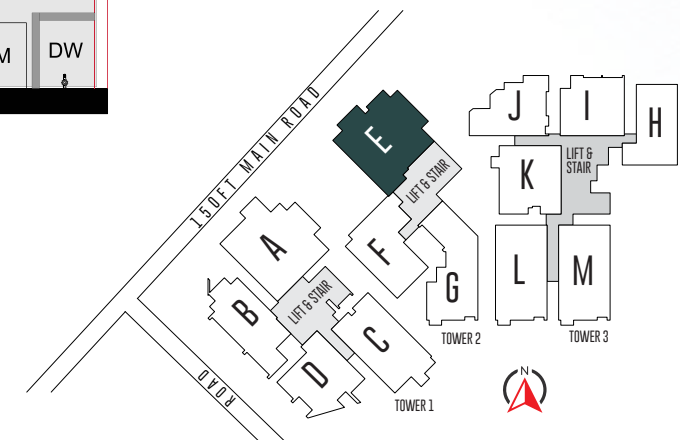
**TOWER-2 (TYPE G)**  
**1553 SFT**  
**2ND-14TH FLOOR**



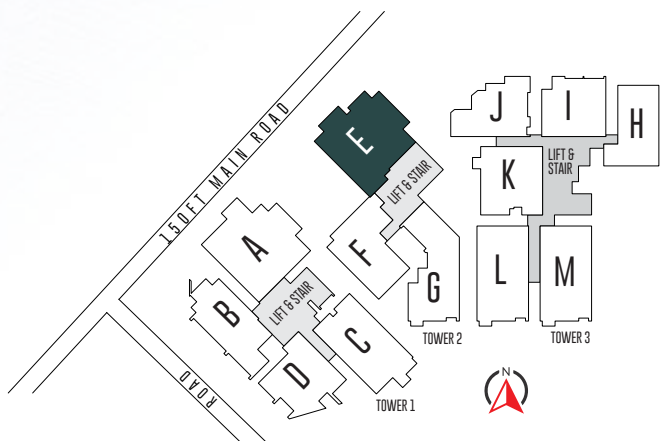
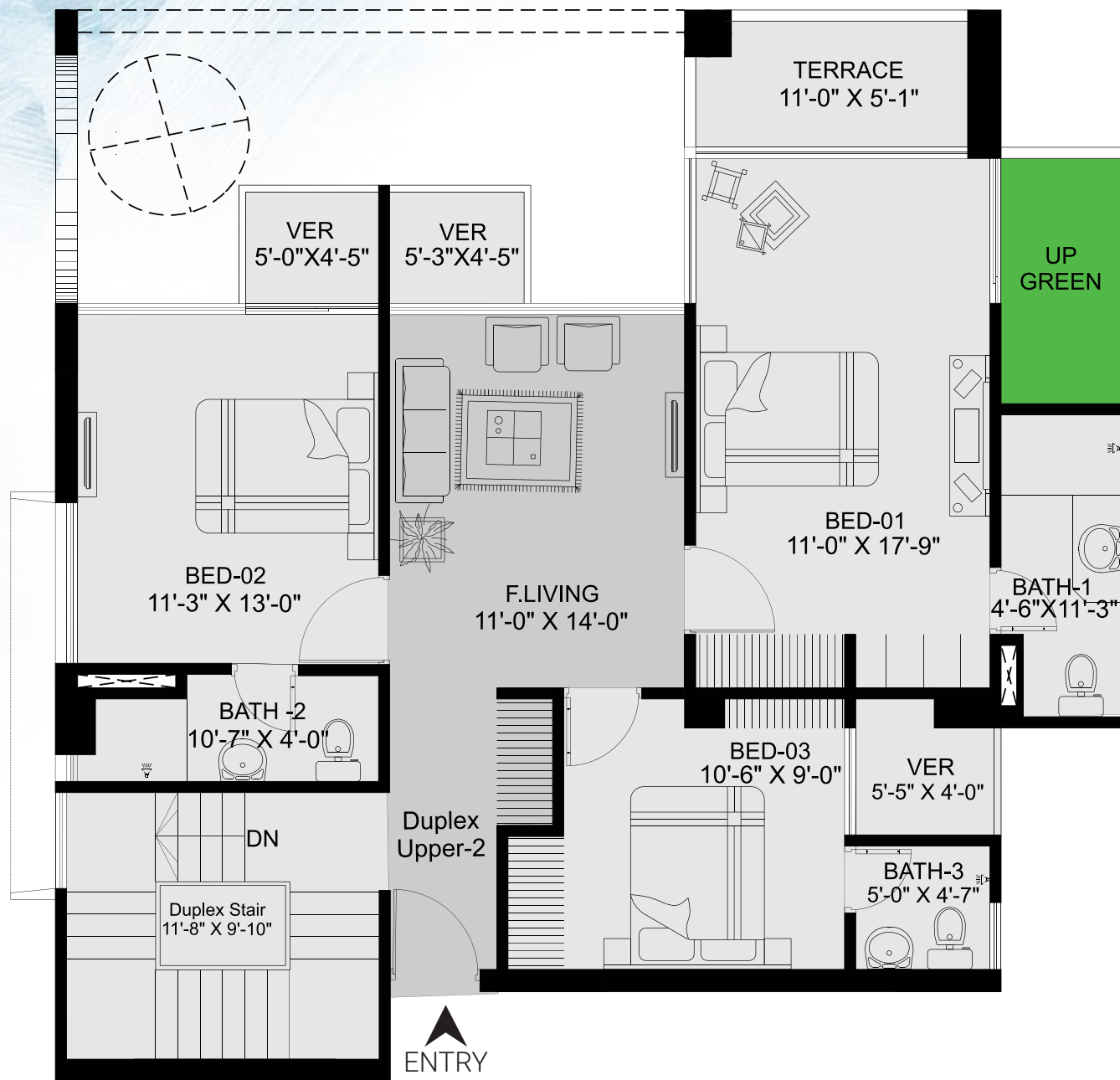
3419 SFT



TOWER-2 (DUPEX LOWER)  
13TH FLOOR







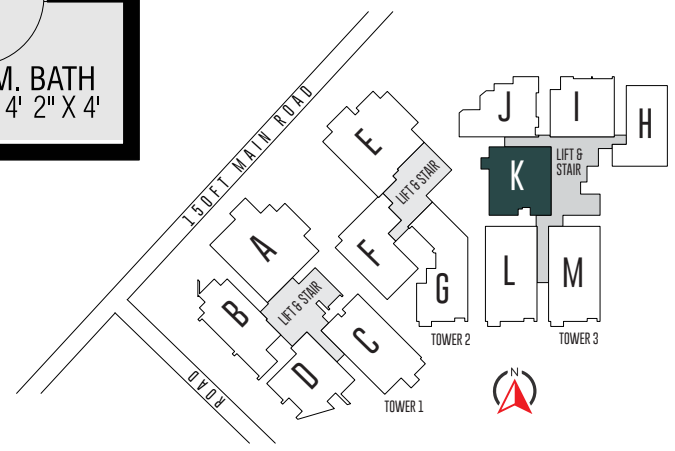
TOWER-2 (DUPEX UPPER)  
**14TH FLOOR**







TOWER-3 WELLNESS FEATURES  
(LIBRARY, STUDY CORNER & MASJID)  
**1ST FLOOR**







MASJID

Find Your Spirituality at Ease





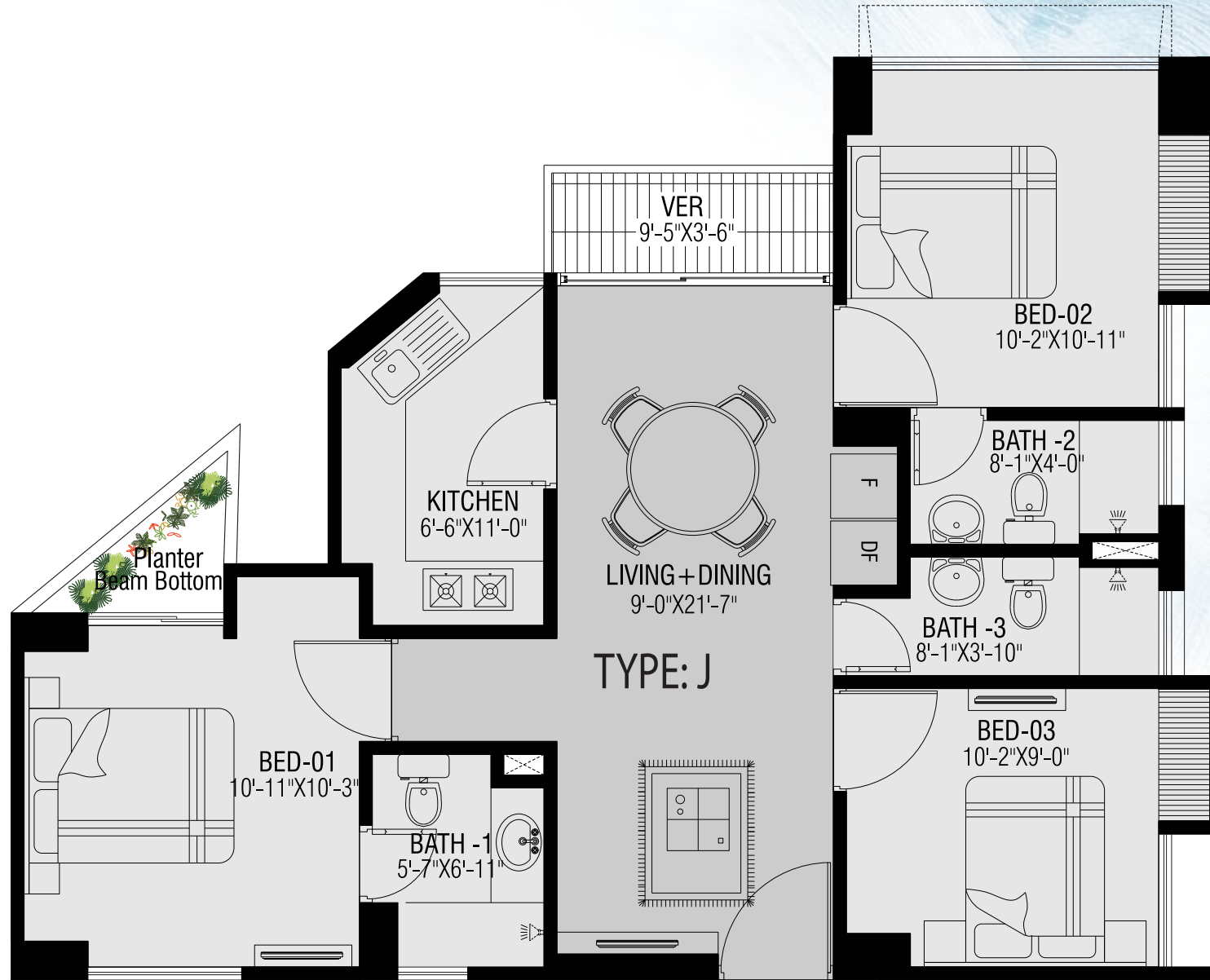
# STUDY CORNER

Indulge in Your Reading Habit

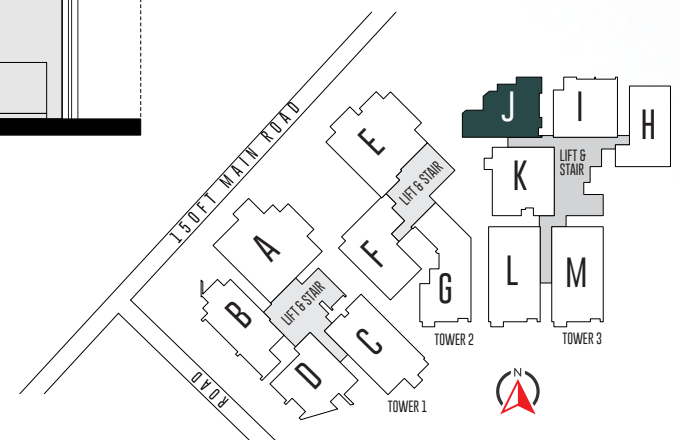


Nothing is pleasanter  
than exploring a **LIBRARY**





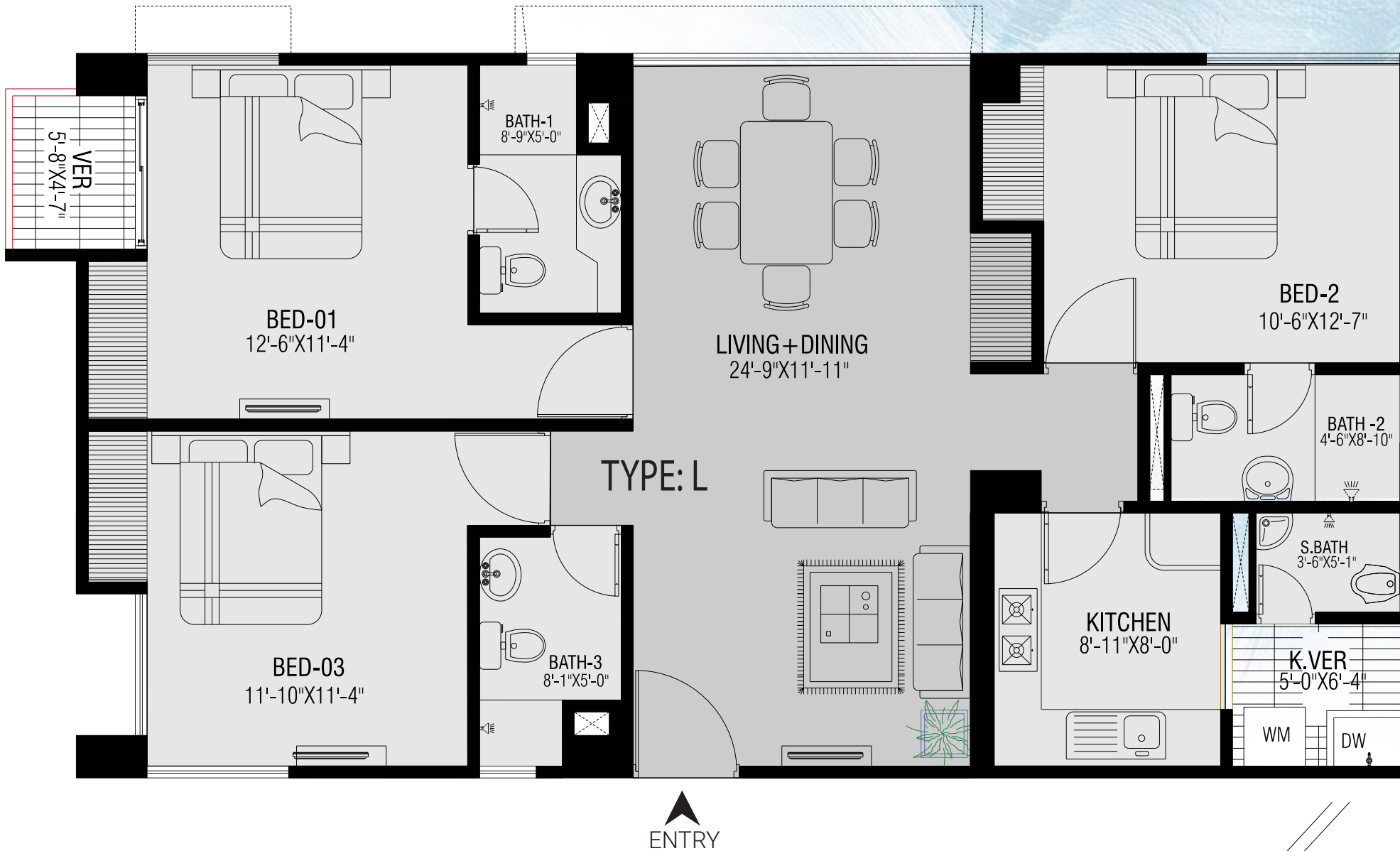
TOWER-3 (TYPE-J)  
 1166 SFT  
 1ST-14TH FLOOR




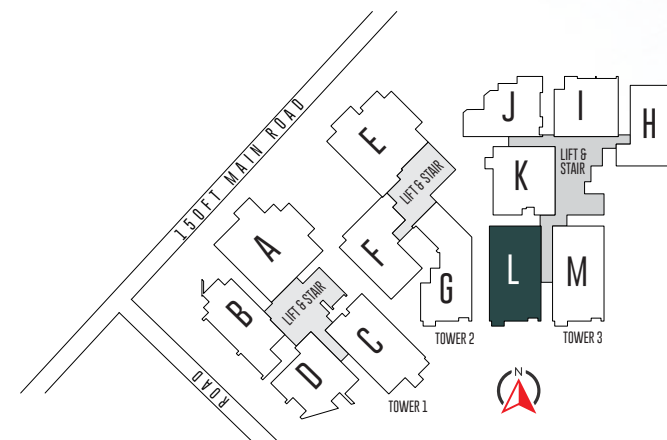




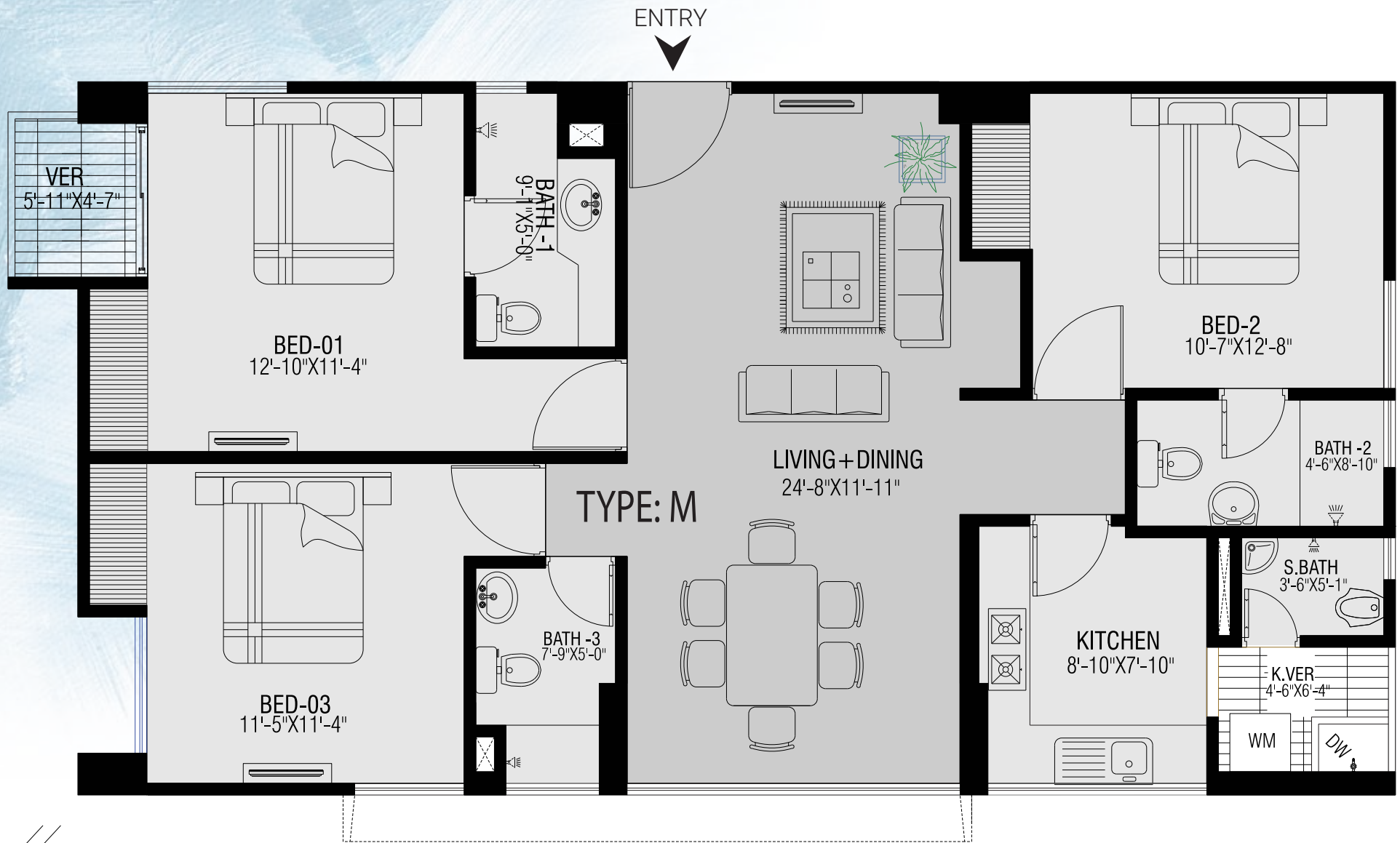





  
**TOWER-3 (TYPE-L)**  
**1577 SFT**  
**1ST-14TH FLOOR**







ENTRY

TYPE: M

LIVING + DINING  
24'-8" X 11'-11"

KITCHEN  
8'-10" X 7'-10"

BED-01  
12'-10" X 11'-4"

BED-2  
10'-7" X 12'-8"

BED-03  
11'-5" X 11'-4"

BATH -3  
7'-9" X 5'-0"

BATH -2  
4'-6" X 8'-10"

BATH -1  
9'-1" X 5'-0"

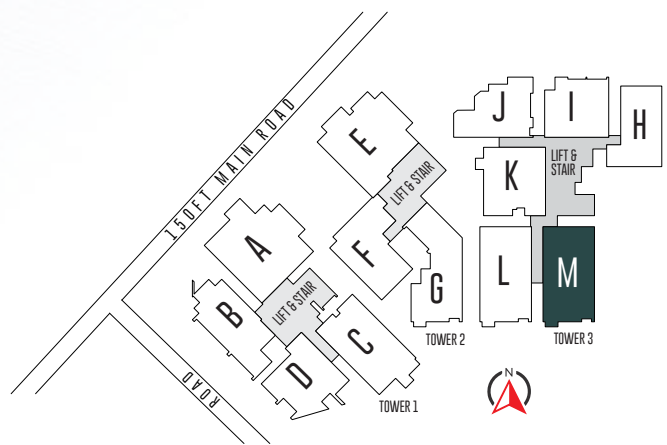
VER  
5'-11" X 4'-7"

S.BATH  
3'-6" X 5'-1"

K.VER  
4'-6" X 6'-4"

WM

DW



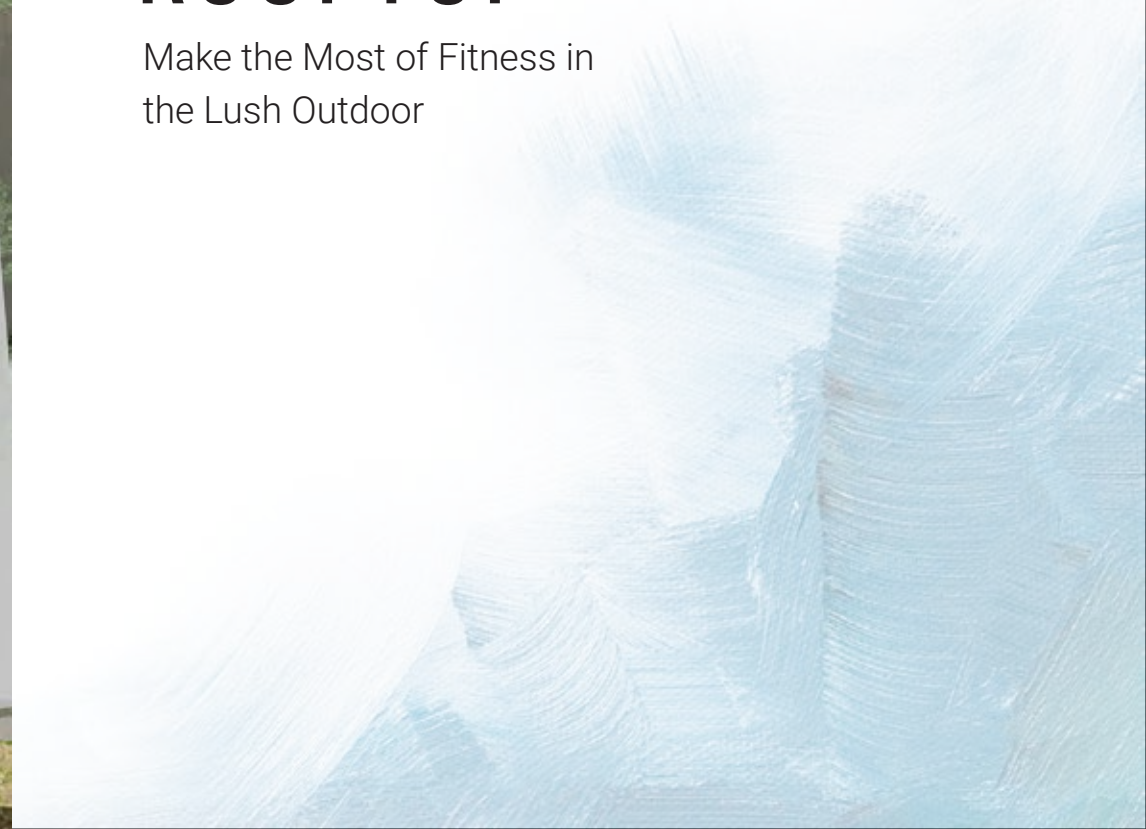
TOWER-3 (TYPE-M)  
**1577 SFT**  
1ST-14TH FLOOR





# ROOFTOP

Make the Most of Fitness in  
the Lush Outdoor







# TOWER-1,2,3 ROOFTOP







Enjoy the *Colorful* Gifts of Nature





# SWIMMING POOL

Swim your worries away





ENJOY  
THE TASTE OF  
A WHOLESOME *life*





# CHILDREN'S PLAY AREA

Let your young ones, enjoy, explore & grow





Be Smart with  
**GetSmart**  
by bti

- Fingerprint Access Door Lock
- Remote Control Light & Fan
- Smart Gas Leakage Detector





LIVE  
LAUGH  
LOVE &  
More than Ever...





## APARTMENT FEATURES

Floors:	24"x24" mirror polished made-in-Bangladesh tiles in foyer, living, dining & all verandahs. Kitchen verandah and utility/staff room with non-slippery tiles matched to the floor scheme.
Main Door:	Solid Chittagong Teak 3'-9"x 7' main entrance check viewer, door handle with Smart fingerprint access door lock, one look-over camera and 2-way voice support function.
Internal Doors:	7' high French polished teak chamble veneer door shutters with teak chamble door frame for all internal doors except bathrooms.
Basin:	Provision of basin at the dining area.
Sliding doors & Windows:	Sliding glass windows and doors used as per floor plan, complete with mohair lining, rainwater barrier and fly-proof netting.
Security and Safety:	Safety grills on windows & full height grill on kitchen verandah.
Painting:	Smooth finished plastic paint on all internal walls & ceilings.
Electrical:	Imported gang type electrical switches, plug points and other fittings. Provision for air conditioners with power points in all bedrooms, living & dining area as per Electrical Design. Internet connection point in living/dining area. Staff calling bell switch in master bedroom. Remote control light and fan switch in living room & dining room.
Lights:	Provision for wall brackets in all bedrooms, living room, dining room and common area. Appropriate lighting in bathrooms, kitchen & verandahs.
Cable connections:	Concealed television line in all bedrooms & family living or living area

## BATHROOM FEATURES

Door:	WPC door shutter with teak chamble solid door frames.
Sanitary ware & C.P fittings:	Sanitary ware, C.P fittings & accessories all made-in-Bangladesh.
Shower area:	Customized shower area with curtain rail as per design.
Tiles:	Wall tiles (up to 7' height) and floor tiles Made-in-Bangladesh.
Counter tops & basins:	Marble countertop cabinet basin in master bathroom, while other bathrooms will have pedestal basin as per developer's choice. Mirrors in all bathrooms.
Waterline:	Concealed hot & cold waterlines in all bathrooms including staff bathroom.
Staff bathroom:	Wall & floor tiles with long pan & moving shower all made-in-Bangladesh.

## KITCHEN FEATURES

Platform:	Concrete platform at 2'-8" height from floor level with granite work top.
Wall & floor tiles:	Wall tiles (up to 7' height) and floor tiles made-in-Bangladesh.
Waterline:	Concealed hot & cold waterline.
Sink:	Single bowl sink.
Gas connection & detector:	LPG connection for oven/stove with gas detector connected to prevent potential fire hazard through gas leakage.

*NOTE: All optional work or additional fittings and fixtures (according to customers' choice) may be done at an additional cost after approval of bti. Kitchen cabinets and built-in wardrobes may be ordered separately at an additional cost. Interior design consultation set up through bti is also available at an extra cost.*



## FIRE PROTECTION SYSTEM

Fire escape for emergency exit with fire protected door.

Fire hydrant, fire alarm & fire extinguisher as per design.

## LIFT, LOBBIES & STAIRCASES

- 3 -stretcher & 3-8 passengers capacity lifts (from reputed international manufacturer as per developer's choice) to be installed with auto voltage regulator, inverter, adequate lighting, full-height photocell sensor and emergency alarm, mirrors on the wall, hand phone, stainless steel mirror etching finish on the doors at the ground floor and hairline finish on other floors. Tiled staircase for easy maintenance and a clean look.
- Lifts will have plasma air inside lift cabin.
- Tiled floors with attractively designed lift walls will complete the elegant look of lift lobbies on every floor.
- Sliding window in stair landing to ensure light and ventilation.

## GENERATOR

- A diesel run emergency auto start/stop canopied generator will be imported from Europe for use in case of power failure with:
  1. Engine-Perkins/Cummins or good quality as per developer's choice.
  2. Alternator- Stamford/ Mecc-Alte or good quality as per developer's choice.
- Generator will support the following:
  1. Lift, water pump and lighting in common space and stairs.
  2. One light and one fan point in every room (including staff bedroom), one light point in kitchen and all bathrooms.
  3. One point for refrigerator and one point for television.

## WATER

- Underground water reservoir with lifting pump to store two days' consumption capacity.
- Overhead water tank above the rooftop with capacity to serve half day requirement.
- Provision with power point for water purifier in kitchen
- Standby water pump for emergency.

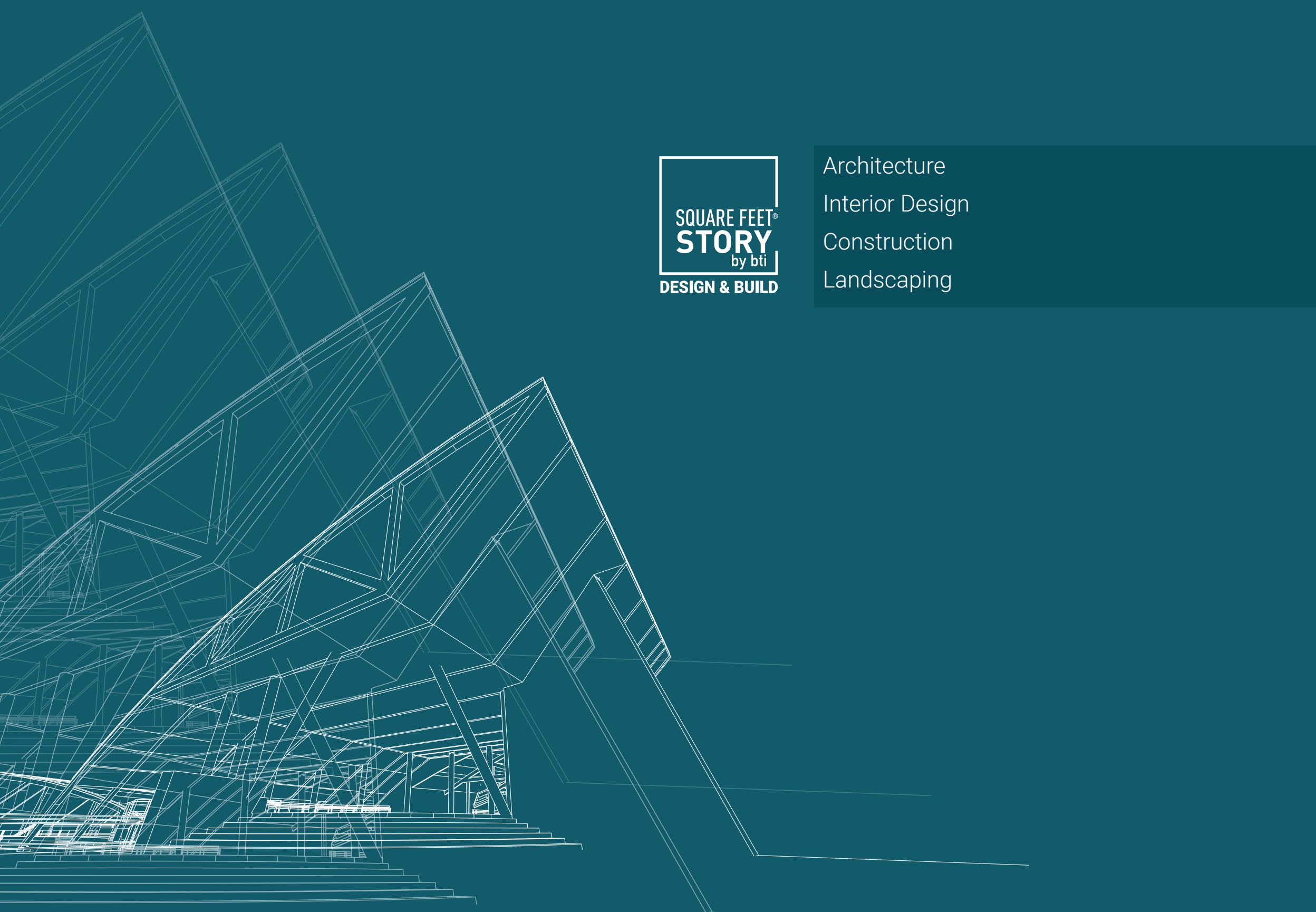
## DEEP TUBE WELL IS AVAILABLE HERE!

Along with a water connection from WASA, a deep tube well within the premise is also available.

Together, both facilities ensure that the residents get special access whenever needed. This means no water shortage issues!







Architecture  
Interior Design  
Construction  
Landscaping









SQUARE FEET®  
**STORY**  
by bti  
DESIGN & BUILD







## MAKE THE RIGHT MOVE BY CHOOSING A HOME AT THE PEAK

An earthquake-resistant design by a team of experienced Structural Engineers to ensure safety & the highest quality of construction.

The structural strength of our building materials is checked in quality-controlled labs at every stage of construction.

Our unparalleled customer service focuses on fulfilling all commitments on time, to ensure our customers are more than just happy with us.





## LET BTI WORK WITH YOU REGARDING ALL REAL ESTATE PROPERTY RELATED SERVICES

bti has added to its portfolio a number of business units of many aspects of the real estate market and beyond. These business units have been created not only to serve bti customers but also those who believe in us as a company well-known for its commitment & expertise that has been carefully built up through last 40 years.

**bti**  
**BROKERAGE**  
BUY, SELL, RENT your property.

**SQUARE FEET®**  
**STORY**  
by bti  
**DESIGN & BUILD**

**bti**  
**PROPERTY**  
**MANAGEMENT**

**GetSmart**  
by bti

**bti**  
**building**  
**PRODUCTS**

**THE**  
**BUSINESS**  
**CENTER**





...SINCE 1984

**btibd.com**

☎ 16604    📞 +880 1313 401 405

---

**DHAKA OFFICE:**

bti Celebration Point  
Plot: 3 & 5, Road: 113/A  
Gulshan, Dhaka 1212  
info@btibd.org

**CHATTOGRAM OFFICE:**

bti Landmark  
549/646, Zakir Hossain Road, Wireless More  
West Khulshi, Chattogram  
info\_ctg@btibd.org

---

**GENERAL DISCLAIMER:**

Information contained in this brochure is subject to change. The measurements are approximate. Illustrations provided are only to facilitate presentation. Apartments are sold unfurnished. Furniture and fixtures are not part of the offer or contract. Features and amenities may vary as per availability based on market prices/design requirement/price fluctuation.

