



Northern
BASHUNDHARA R/A
Light



*Ensure Delightful Days Ahead
for Your Family*

AT A GLANCE

Built over 15 katha

Number of floors G+9

Apartment Size

Type A: 2368 sft. | Type B: 2368 sft.

Type C: 1976 sft.

3-4 bedroom homes

1 stretcher & 1 passenger lift

RAJUK Approval no.

25.39.0000.106.33.960.22

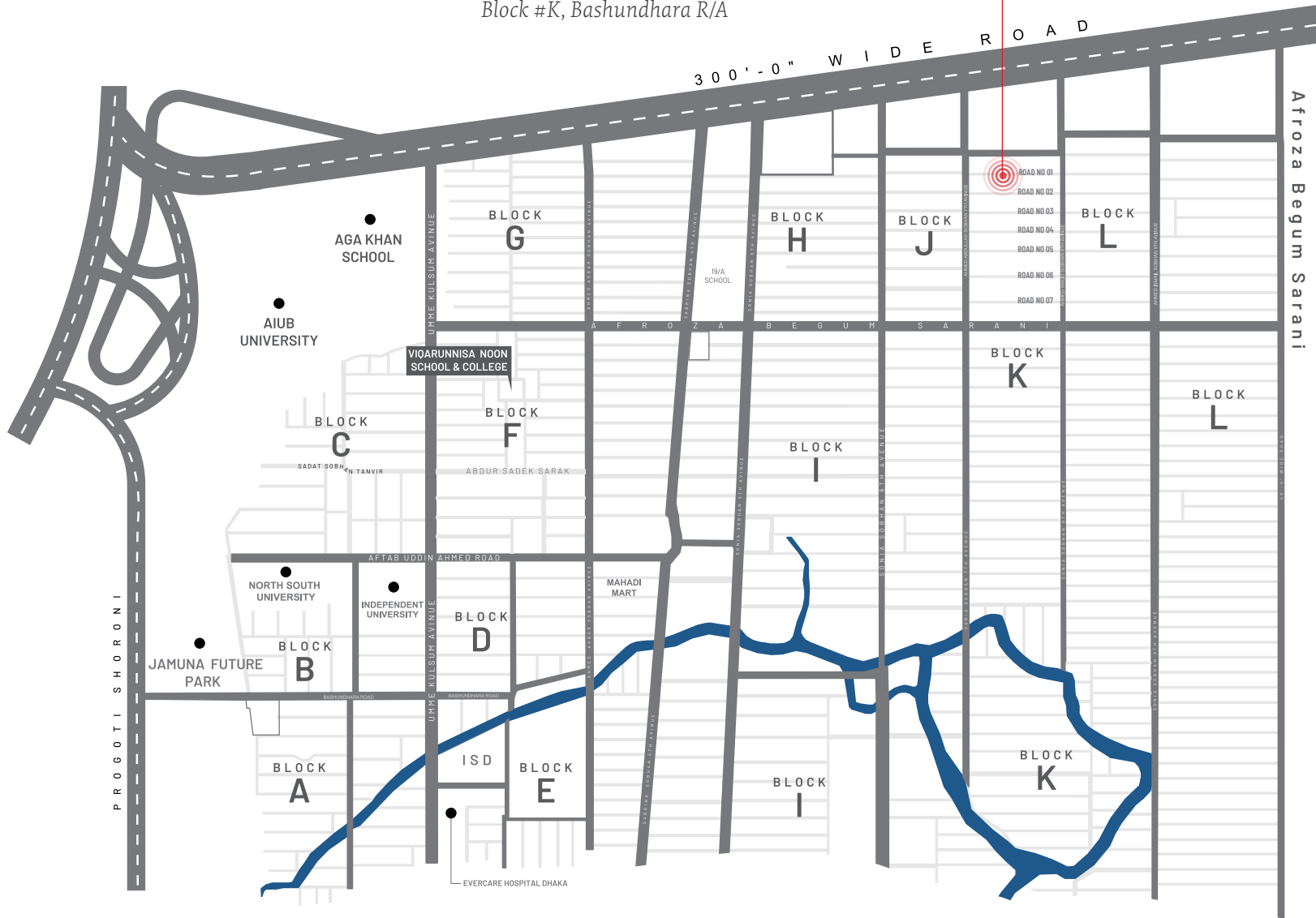


Northern
Light



Northern Light

Plot # 202,203,204, Road-01,
Block #K, Bashundhara R/A



CONVENIENCES NEARBY



EDUCATIONAL INSTITUTIONS

- Playpen School
- International School Dhaka
- HURDCO International School
- Viqarunnisa Noon School
- The Aga Khan Academy
- North South University
- Independent University, Bangladesh

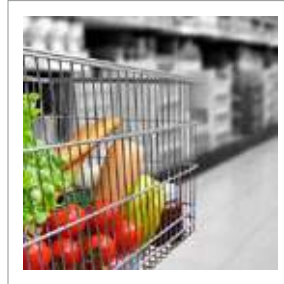
HOSPITALS

- Evercare Hospital Dhaka
- Bashundhara Eye Hospital & Research Institute
- Baridhara General Hospital
- Upasham Health Point-Pvt Ltd.
- Dhaka Metro Eye Hospital



GROCERY

- Mehedi Mart
- Bazar Sharabela
- Shwapno
- Wholesale Club



CONVENTION CENTER

*International Convention
City Bashundhara (ICCB)*



TRANSPORT

- Close to 300 ft Road, Purbachal New Town
- Close to 100 ft Road, Madani Avenue
- Close to MRT-5 Bhatara Station (Under construction)

RECREATIONAL FACILITIES

- Jamuna Future Park
- Rupayan Shopping Square
- Chef's Table Courtside
- Garden & Gourmet Cuisines by S&S
- Sheikh Hasina International Cricket Stadium, Purbachal
- Jolshiri Central Park





BUILDING ENTRANCE

- Double-height grand entrance.
- The front elevation of the building will have a stylish combination of groove, cladding tiles, glass and paint (as per design).
- Greenery enhances the stylish entrance gate with a concierge for easy monitoring of the building round the clock.
- Secured and well-designed boundary wall to match the building façade.
- CCTV monitoring system for 24/7 surveillance of the building with cameras covering all entrance points, all lift lobbies and periphery of the building as per developers' discretion.



HERE PLAY TIME
IS fun time





ELEGANT WAITING LOUNGE
TO GREET YOU





GROUND FLOOR FEATURES

- Double height waiting lounge (as per design).
- Proper drainage facility around the periphery of the building for easy water drainage on ground floor.
- Drivers' waiting area with toilet facilities.
- Intercom connection from concierge to all apartments.
- Caretaker's room with toilet facilities.



COMMUNITY SPACE



SAUNA ROOM



1ST FLOOR FEATURES

- *Meet & Greet space with terrace and wash zone.*
- *Reception and lounge.*
- *Air-conditioned gym with basic workout equipment including sauna with changing room , powder bath and locker facilities.*



GYM SPACE

MAKE THE RIGHT MOVE BY CHOOSING A BTI HOME

- *We provide fire-protected doors, fire hydrants, fire alarms & fire extinguishers to mitigate any chance of fire damage.*
- *An earthquake-resistant design by a team of experienced and qualified civil engineers to ensure the highest quality of workmanship and safety.*
- *The structural strength of our building materials is checked in quality-controlled labs at every stage of construction.*
- *Our unparalleled customer service focuses on fulfilling all commitments on time, to ensure our customers are more than just happy with us.*





1 S T F L O O R P L A N



3RD to 6TH & 9TH FLOOR PLAN

TYPE B
2368 SFT

N





2ND
&
3RD
Floor
PLAN

TYPE C
1976 SFT



Northern
Light





R O O F T O P F L O O R P L A N

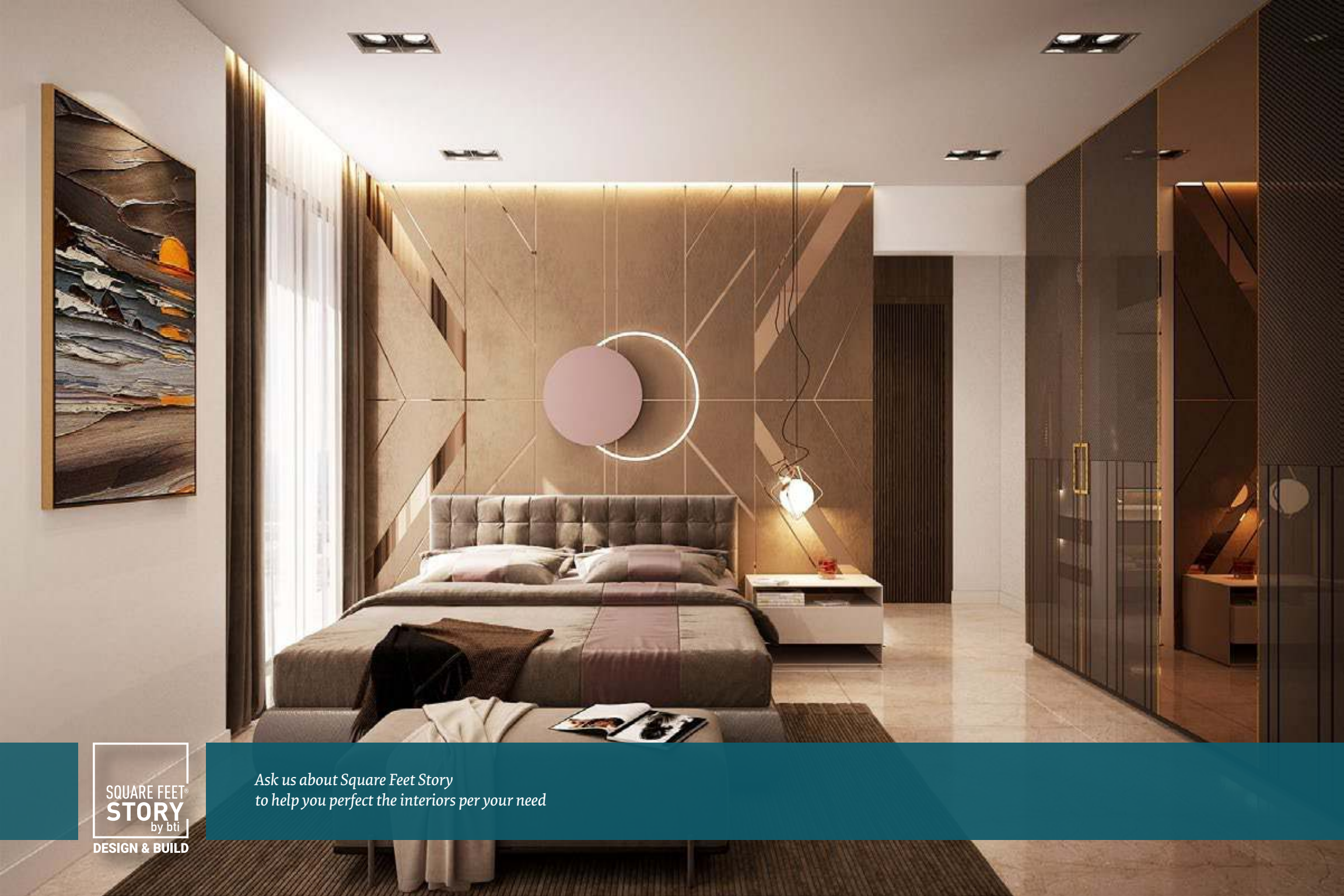
ROOFTOP FEATURES

- Landscaped rooftop.
- BBQ area with portable BBQ tray.
- Lime terracing of adequate thickness for protection from heat.
- Protective parapet wall/ railing 4'-0" high around the periphery.
- Separated clothes drying area with lines for drying laundry.





*Spend Joyful Mornings & Evenings
at the Landscaped Rooftop*



APARTMENT FEATURES:

Floors:	24"x24" mirror polished imported tiles in foyer, bedrooms, living, dining cum family lounge area & all verandahs.
	Staff bedroom (if any) & kitchen verandah with non-slippery tiles (made in Bangladesh) matched the floor scheme.
Main Door:	Solid Chittagong Teak 3'-9"x 7' main entrance door with door chain, check viewer, apartment nameplate, door handle with Smart fingerprint access door lock, one look-over camera, and 2-way voice support function.
Internal Doors:	7' high French polished veneer door shutters with teak chamble door frame for all internal doors except bathrooms. Cylindrical lock on all internal doors.
Sliding doors & Windows:	Sliding glass windows and doors used as per floor plan, complete with mohair lining, rainwater barrier, and fly-proof netting.
Security and Safety:	Safety grills on windows & full-height grills on kitchen verandahs.
Basin provision:	Provision for basin at the dining area.
Painting:	Smooth finished plastic paint on all internal walls & ceilings.
Electrical:	Imported gang-type electrical switches, plug points, and other fittings. Provision for air conditioners with power points in all bedrooms, living, dining cum family lounge area as per Electrical Design. Internet connection point in dining cum family lounge area. Staffcalling bell switch in the master bedroom. Remote control light and fan switch in the living, and dining cum family lounge area.
Lights:	Provision for wall brackets in all bedrooms, dining cum family lounge and common area. Appropriate lighting in all bathrooms, kitchen & verandahs.
Cable Connections:	Concealed television line in all bedrooms & family lounge.

FEATURES & AMENITIES

BATHROOM FEATURES:

Door:	Wood Plastic Composite (WPC) door shutter with teak chamble solid door frames.
Sanitary ware:	Imported sanitary ware.
C.P fittings & Accessories:	C.P fittings & Accessories made in Bangladesh.
Shower area:	Customized shower area with curtain rail as per design.
Tiles:	Wall tiles up to 7' height and floor tiles made in Bangladesh.
Counter tops & basins:	Marble countertop imported cabinet basin in master bathroom and other bathrooms will have imported pedestal basin as per developer's choice. Mirrors in all bathrooms.
Waterline:	Concealed hot & cold waterlines in all bathrooms including staff bathroom.
Staff Bathroom:	Wall & floor tiles with long pan & moving shower all made in Bangladesh.

KITCHEN FEATURES:

Platform:	Granite in kitchen countertop.
Wall & floor Tiles:	Wall tiles up to 7' height and floor tiles made in Bangladesh.
Waterline:	Concealed hot & cold waterline.
Sink:	Single bowl sink.
Gas Connection & Detector:	LPG connection for oven/stove with gas detector connected to prevent potential fire hazard through gas leakage.

FEATURES & AMENITIES

LIFT, LOBBIES & STAIRCASES

- 1 (One) high quality Stretcher lift & 1 (One) high quality Passenger lift (from reputed international manufacturer as per developer's choice) to be installed with auto voltage regulator, inverter, adequate lighting, full-height photocell sensor and emergency alarm, mirrors on the wall, hand phone, stainless steel mirror etching finish on the doors at the ground floor and hairline finish on other floors
- Tiled staircase for easy maintenance and a clean look.
- Tiled floors with attractively designed lift walls will complete the elegant look of lift lobbies on every floor.
- Lifts to have Plasma Air inside lift cabin.
- Sliding window in stair landing to ensure light and ventilation.

PARKING

- There will be 25 parking spaces on Ground floor.
- Parking spaces will be reserved and marked with respective apartment numbers on the adjacent wall or appropriate location and will be according to the allotment.

GENERATOR

- A diesel run emergency auto start/stop canopied generator will be imported from Europe for use in case of power failure with:
 1. Engine-Perkins/Cummins or good quality as per developer's choice.
 2. Alternator- Stamford/ Mecc-Alte or good quality as per developer's choice.
- Generator will support the following:
 1. Lift, water pump and lighting in common space and stairs.
 2. One light and one fan point in every room, one light point in kitchen and all bathrooms.
 3. One point for refrigerator and one point for television.

WATER

- Underground water reservoir with lifting pump to store two days' consumption capacity.
- An overhead water tank above the rooftop with capacity to serve half day requirement.
- One standby water pump for emergency.
- Deep tube well.

All optional work or additional fittings and fixtures (according to customers' choice) may be done at an additional cost after approval of bti. Kitchen cabinets and built-in wardrobes may be ordered separately at an additional cost. Interior design consultation set up through bti is also available at an extra cost.



*Ask us about Square Feet Story
to help you perfect the interiors per your need*



AN IMPRESSIVE HOME
FOR YOUR FAMILY



LET BTI WORK WITH YOU REGARDING
ALL REAL ESTATE PROPERTY RELATED SERVICES

bti has added to its portfolio a number of business services in many aspects of the real estate market and beyond. These business services have been created not only to serve the bti customers but also serve those who believe in our reputation as a company well-known for its business ethics and expertise that has been carefully built up through 40 years of serving customers.



DHAKA OFFICE

bti Celebration Point

Plot: 3 & 5, Road: 113/A, Gulshan, Dhaka 1212

Email: info@btibd.org

CHATTOGRAM OFFICE

bti Landmark

549/646, Zakir Hossain Road, Wireless More,
West Khulshi, Chattogram.

Email: info_ctg@btibd.org

btibd.com | 16604

whatsapp: +880 1313 401 405



building
technology
& ideas ltd.®

in pursuit of excellence...