



FREEDOM

B A S H U N D H A R A R / A



building
technology
& ideas ltd.®
...since 1984
in pursuit of excellence...

An Inspiring Edifice

 **FREEDOM**
BASHUNDHARA R/A

"Freedom lies in being bold."
- Robert Frost

* Web version/Last updated on: 30/04/2025





AT A GLANCE



Plot# 778, 779 & 805, Road# 35 & 37
Block- L, Bashundhara- R/A



Built over 9 katha



Apartment size:
1700+, 1800+, 2650+, & 2800+ sft;
Duplex: 3900+ sft



3/4 Bedroom apartments



North & South Facing Plot



25 feet wide road
on both north and south sides



Number of floors:
G + 9



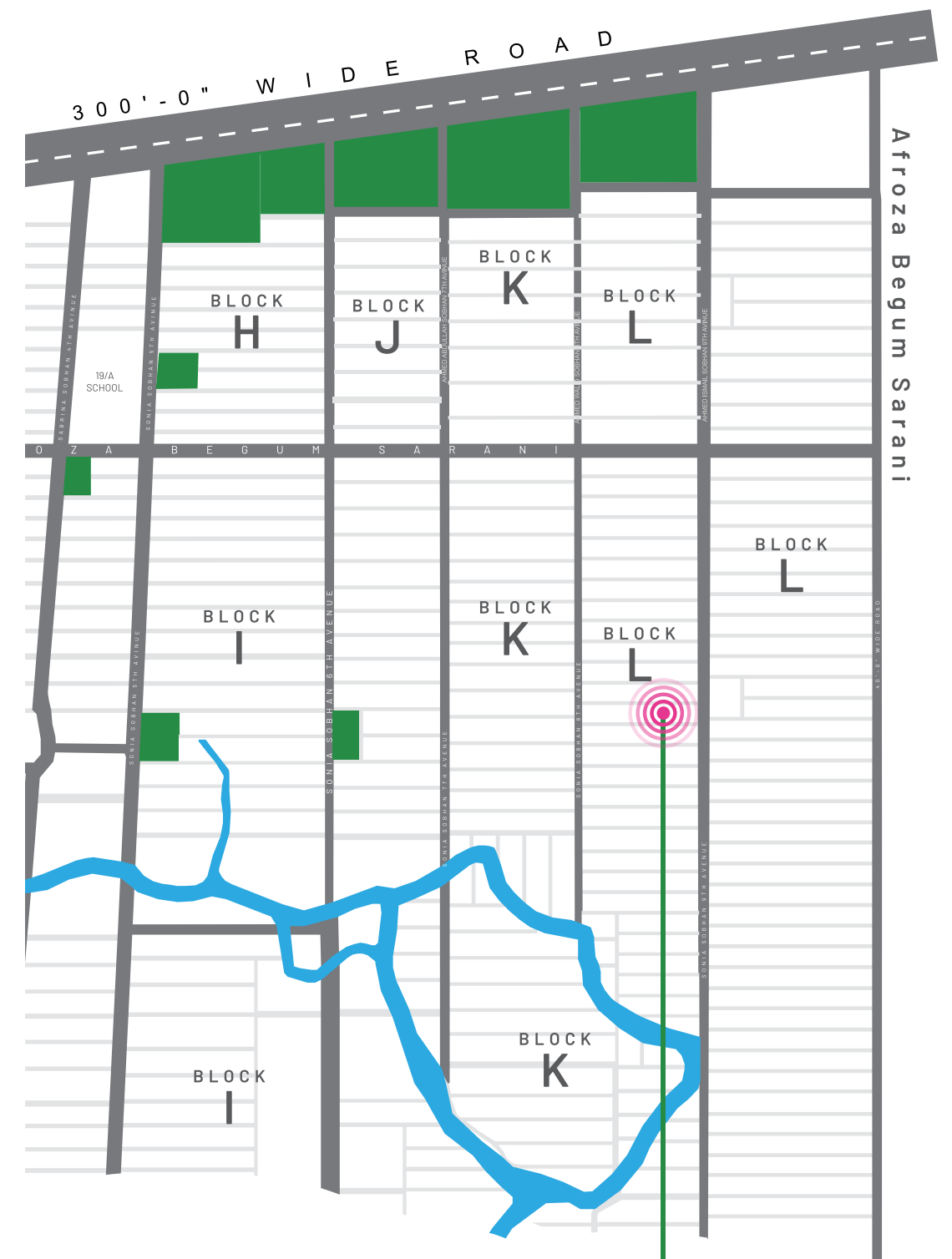
Double-height entrance



15 Parking spaces



RAJUK approval no:
25.39.0000.106.33.00945.24.0945



 **FREEDOM**

Plot# 778, 779 & 805, Road# 35 & 37
Block- L, Bashundhara- R/A

NEARBY AMENITIES



EDUCATION

- > Viqarunnisa Noon School
- > NSU
- > IUB



DAILY NEEDS

- > Shwapno



HEALTH

- > Evercare Hospital Dhaka



RECREATIONAL ZONE

- > Jamuna Future Park

ARCHITECT'S NOTE

"Freedom" is a modern home that brings together purpose & elegance. The plot has a North-South orientation, which is why the design incorporates full-height windows and verandahs to maximize natural light & circulation of air. The structure includes open terraces and a thoughtfully landscaped rooftop to bring residents' closer to nature. Its sleek, contemporary look—marked by bold vertical lines—complements its thoughtful, resident-focused layout, offering a peaceful and practical living experience.

Architect Tawfiq Kalam Suhas





Spread Your
WINGS & SOAR

- > Double Height Entrance.
- > The front elevation of the building will have a stylish combination of groove, glass and paint (as per design).
- > 25 feet wide road on both north and south sides.
- > Beautiful landscaping in front (as per design).
- > CCTV monitoring system for 24/7 surveillance of the building with cameras covering all entrance points, all lift lobbies and periphery of the building as per developer's discretion.



GROUND FLOOR & PARKING

- > Regal double height entrance studded with greenery to invite everyone inside.
- > Proper drainage facility around the periphery of the building.
- > Garbage bin center at easy access point.
- > Driver's waiting area, caretaker's room with toilet facilities.
- > 24/7 intercom connection from concierge to all apartments.

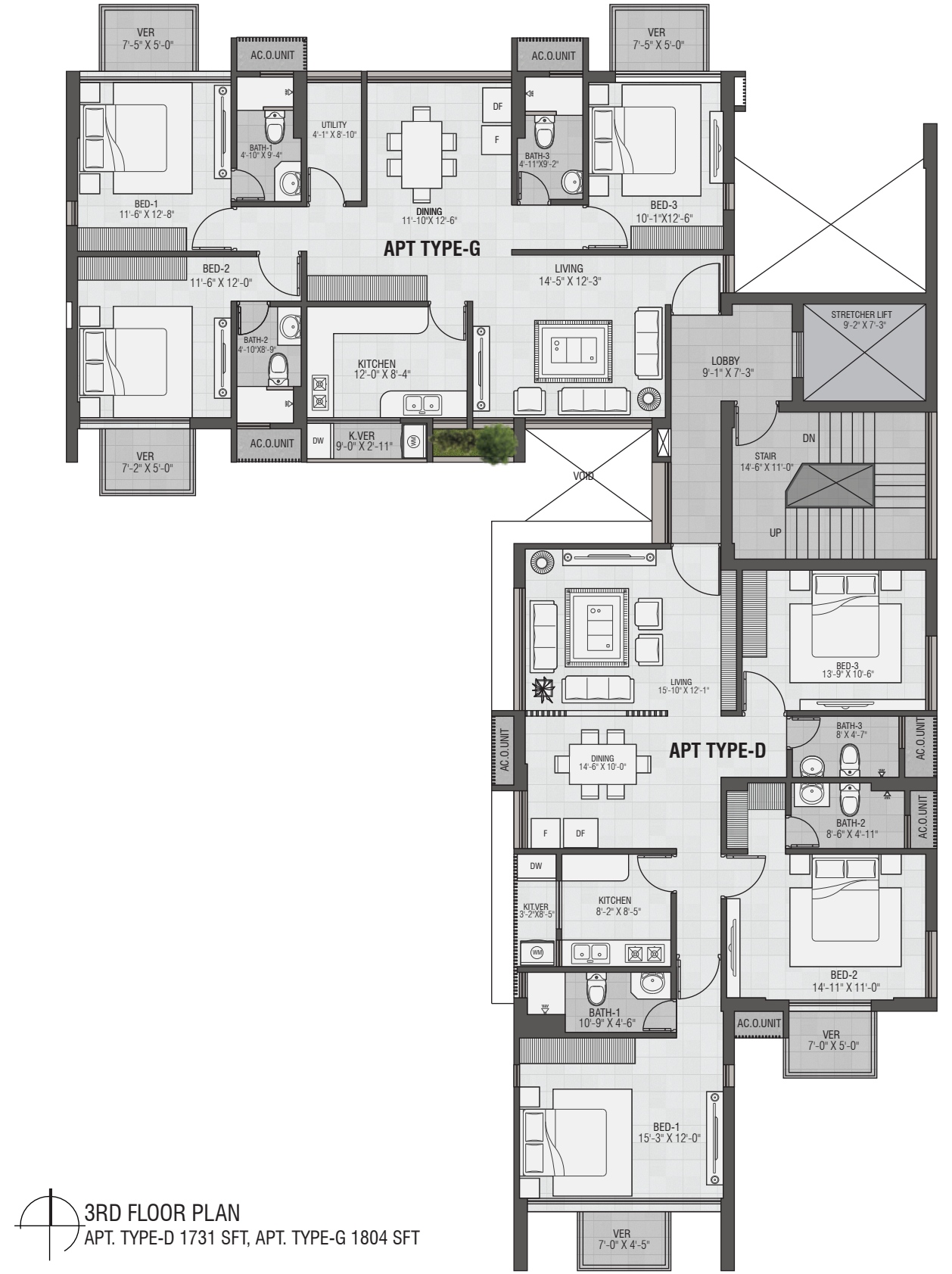
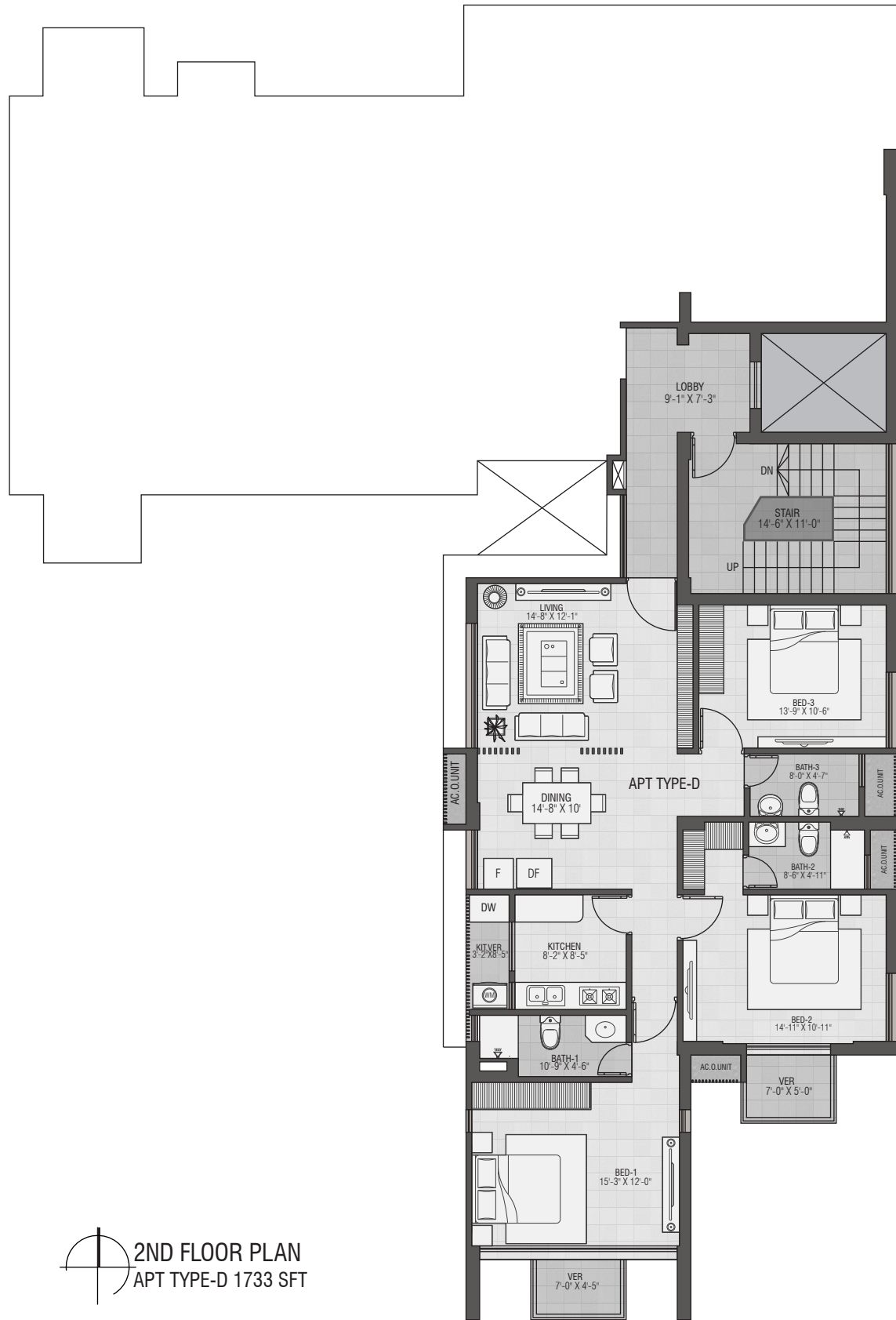


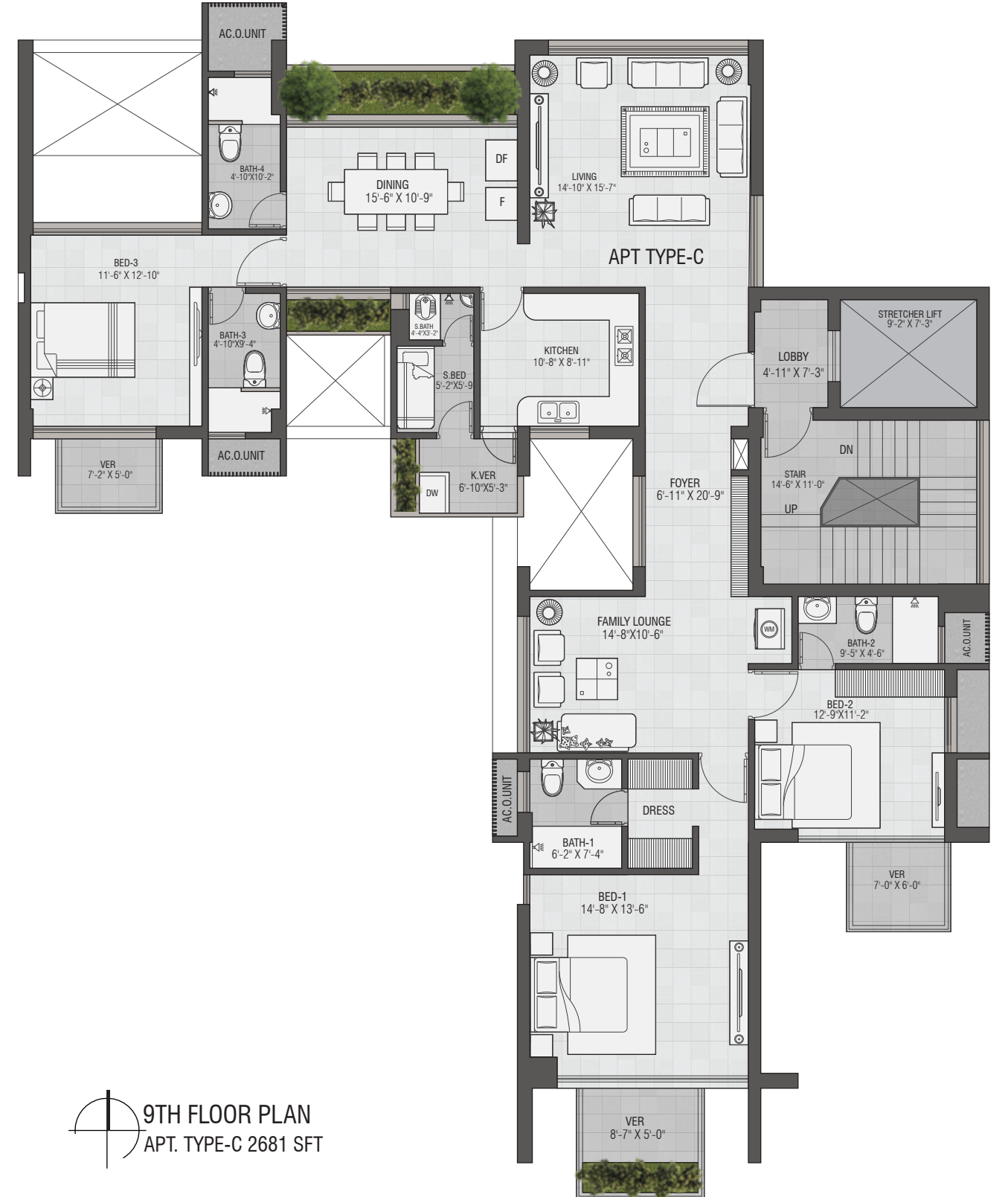


DUPLEX LOWER 1ST FLOOR
1419 SFT TOTAL 3917 SFT



DUPLEX UPPER 2ND FLOOR
2498 SFT TOTAL 3917 SFT







- > Landscaped rooftop.
- > Children's Playing area
- > BBQ area with portable BBQ tray
- > Lime terracing of adequate thickness for protection from heat.
- > Protective parapet wall/ railing 4'-0" high around the periphery.
- > Separated clothes drying area with lines for drying laundry.



LIFT, LOBBIES & STAIRCASES

- 1 (One) Stretcher lift (from reputed international manufacturer as per developer's choice) to be installed with auto voltage regulator, inverter, adequate lighting, full-height photocell sensor and emergency alarm, mirrors on the wall, hand phone, stainless steel mirror etching finish on the doors at the ground floor and hairline finish on other floors.
- Tiled staircase for easy maintenance and a clean look.
- Tiled floors with attractively designed lift walls will complete the elegant look of lift lobbies on every floor.
- Sliding window in stair landing to ensure light and ventilation.



APARTMENT FEATURES

FLOORS

24"x24" Mirror-polished imported tiles in foyer, beds, living, dining and family lounge (if any) area & all verandahs. Staff Bed, utility (if any) & Kitchen verandah with non-slip made-in-Bangladesh tiles matched to the floor scheme. Concrete slab for AC outdoor units.

MAIN DOOR

Solid Chittagong Teak 3'-9"x 7' main entrance door with door chain, apartment name plate, door handle with smart fingerprint access door lock & one look-over camera with 2-way voice support function.

INTERNAL DOORS

7' high French polished Veneer door shutters with Teak Chamble door frame for all internal doors except baths. Cylindrical lock on all internal doors.

SLIDING DOORS & WINDOWS

Sliding glass windows and doors used as per floor plan, complete with mohair lining, rainwater barrier, and fly-proof netting.

BASIN PROVISION

Dining area will have provision for one basin.

SECURITY & SAFETY

Safety grilles on windows & full height grille on kitchen verandahs. Fabricated sliding safety grille in verandahs as per design.

PAINTING

Smooth finished plastic paint on all internal walls & ceilings.

ELECTRICAL

Imported gang-type electrical switches, plug points, and other fittings. Provision for air conditioners with power points in all beds, living, dining and family lounge (if any) area as per electrical design. Internet connection point in dining or family lounge area. Staff calling-bell switch in master bed. Remote control light and fan switch in living, dining and family lounge area (if any).

LIGHTS

Provision for wall brackets in all bed, living, dining and family lounge (if any). Appropriate lighting in all baths, kitchen & verandahs.

CABLE CONNECTIONS

Concealed television line in all bedrooms, living & family lounge (if any).



BATHROOM FEATURES

DOOR

Wood Plastic Composite (WPC) door shutter with Teak Chamble solid door frames.

SANITARYWARE

Imported sanitaryware.

C.P FITTINGS & ACCESSORIES

Made in Bangladesh C.P. fittings & accessories.

SHOWER AREA

Customized shower area with curtain rail as per design.

TILES

Wall tiles (up to 7' height) and floor tiles made-in-Bangladesh.

COUNTERTOPS & BASINS

Marble countertop imported cabinet basin in master & 2nd bath and other bathrooms will have imported pedestal basin as per developer's choice. Mirrors in all bathrooms.

WATER LINE

Concealed hot & cold water lines in all bathrooms, including staff bath (if any).

STAFF BATHROOM (IF ANY)

Made-in-Bangladesh wall & floor tiles with long pan & moving shower.

KITCHEN FEATURES

PLATFORM

Granite slab in kitchen countertop.

WALL & FLOOR TILES

Wall tiles (up to 7' height) and floor tiles made-in-Bangladesh.

WATERLINE

Concealed hot & cold waterline.

SINK

Double bowl sink.

GAS CONNECTION & DETECTOR

LPG connection for oven/stove with gas detector connected to prevent potential fire hazard through gas leakage



GENERATOR

A diesel run emergency auto start/stop canopied generator will be imported from Europe for use in case of power failure with:

- > Engine-Perkins/Cummins or good quality as per developer's choice.
- > Alternator- Stamford/ Mecc-Alte or good quality as per developer's choice.

Generator will support the following:

- > Lift, water pump and lighting in common space and stairs.
- > One light and one fan point in every room, one light point in the kitchen and in all baths.
- > One point for the refrigerator and one point for television.

WATER

- > Underground water reservoir with lifting pump to store two days' consumption capacity.
- > An overhead water tank above the rooftop with capacity to serve half day requirements.
- > One standby water pump for emergencies.

OPTIONAL

All optional work or additional fittings and fixtures (according to the customer's choice) may be done at an additional cost after the approval of bti. Kitchen cabinets and built-in wardrobes can be ordered separately. Interior design consultation with Square Feet Story (SFS) is also available through bti.

STRUCTURAL & GENERAL ENGINEERING

- > Structurally strong building design based on ACI/BNBC/ASTM to withstand 210 km/hr winds and earthquake resistance as per BNBC.
- > Machine made concrete Hollow block / Reinforced Concrete Panels (damp treated & salinity proof) as per developer's choice to be used.
- > All structural materials, including steel, cement, bricks, Sylhet sand, and other aggregates are screened for quality, including laboratory testing.
- > Systematic testing in quality control laboratories of concrete and other completed work samples, at every stage.



PEACE OF MIND GUARANTEED

- › Proper fire protection provided by ensuring fire safety measures like; fire hydrant, fire alarm & extinguisher and fire escape for emergency exit with fire protected door on all floors.
- › Earthquake-resistant design assures structural integrity.
- › 24/7 CCTV surveillance and intercom service for security.
- › The usage of hollow blocks / Reinforced Concrete Panels in the construction enables the reduction of sound and heat, and makes the structure lightweight.
- › The best after-sales service in the real estate sector

* Web version/Last updated on: 30/04/2025

SQUARE FEET STORY

has been created to provide you with:

- > Interior design & implementation*
- > Architectural design & construction
- > 3D Visualization
- > Consultancy



*If you want to have your apartment's interiors designed as shown in this brochure, reach us at **16604!**

* Web version/Last updated on: 30/04/2025

Let bti work with you regarding all real estate-related services

BROKERAGE

Buy, sell or rent your properties with our expertise.

SQUARE FEET STORY (SFS)

Design your space with us through architectural design, construction, and interior design.

PROPERTY SECURITY & MANAGEMENT (PSM)

Get your property secured and managed along with the best-quality maintenance service.

BTI BUILDING PRODUCTS

Make your home sustainable with our eco-friendly building materials.

THE BUSINESS CENTER (TBC)

Now fully furnished shared office or co-working spaces are just one call away!

LANDSCAPERS

With our professional landscaping services, bring the greenery to your space.

☎ 16604 or +8809613191919 📞 01313401405



bti Celebration Point

Plot 3&5, Road 113/A, Gulshan 2, Dhaka 1212

Email: info@btibd.org

CHATTOGRAM OFFICE

bti Landmark

549/646, Zakir Hossain Road, Wireless More, West Khulshi, Chattogram

Email: info_ctg@btibd.org

 **16604**
+8809613191919

 +880 1313 401 405



btibd.com



**YEARS OF
EXCELLENCE**

General Disclaimer

Information contained in this brochure is subject to change. The measurements are approximate. Illustrations provided are only to facilitate presentation. Apartments are sold unfurnished. Furniture or fixtures are not part of the offer or contract. Features and amenities may vary as per availability based on market prices/design requirements/price fluctuation.